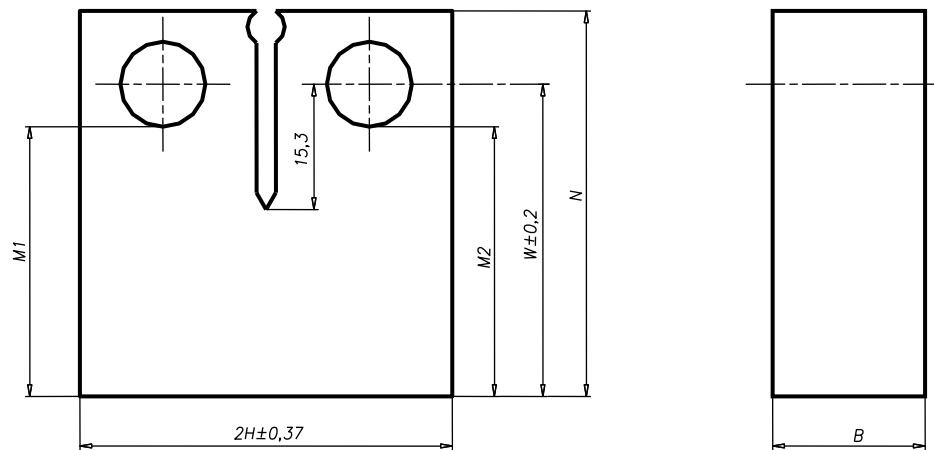


Specimen type: C(T)



Unmarked on drawing symbols are in accordance to ASTM E1290-08 – Standard Test Method for Crack-Tip Opening Displacement (CTOD) Fracture Toughness Measurement standard.

Specimen	M1 [mm]	M2 [mm]	W [mm]	N [mm]	B [mm]	2H [mm]	a ₀ [mm]	b ₀ [mm]	z [mm]
XY 1	33.16	33.01	38.09	47.53	18.83	45.12	18.95	19.14	9.45
XY 4	33.10	33.00	38.05	47.62	18.78	45.20	19.60	18.45	9.57
XY 5	33.18	33.50	38.34	47.50	18.79	45.18	20.16	18.18	9.16