

This is an Accepted Manuscript version of the following article, accepted for publication in **Road Materials and Pavement Design**.  
Postprint of: Kosińska J., Boczkaj G., Gałęzowska G., Powysocka J., Przyjazny A., Kamiński M., Determination of modifier contents in polymer-modified bitumens and in samples collected from the roads using high performance gel permeation/size exclusion chromatography, *Road Materials and Pavement Design*, Vol. 17, Iss. 3 (2016), pp.547-562, DOI: [10.1080/14680629.2015.1094398](https://doi.org/10.1080/14680629.2015.1094398)  
It is deposited under the terms of the Creative Commons Attribution-NonCommercial License (<http://creativecommons.org/licenses/by-nc/4.0/>), which permits non-commercial re-use, distribution, and reproduction in any medium, provided the original work is properly cited.

**Determination of modifier contents in polymer-modified bitumens and in samples collected from the roads using high performance gel permeation/size exclusion chromatography**

Journal:	<i>Road Materials and Pavement Design</i>
Manuscript ID:	RMPD-14-12-27.R1
Manuscript Type:	Original Scientific Paper
Keywords:	polymer modifiers, styrene-butadiene-styrene (SBS), road bitumen, size exclusion chromatography (GPC/SEC), Fourier transform infrared spectroscopy (FTIR), thin layer chromatography coupled with flame ionization detection (TLC-FID)

SCHOLARONE™  
Manuscripts

1  
2  
3  
4  
5  
6  
7  
8  
9  
10  
11  
12  
13  
14  
15  
16  
17  
18  
19  
20  
21  
22  
23  
24  
25  
26  
27  
28  
29  
30  
31  
32  
33  
34  
35  
36  
37  
38  
39  
40  
41  
42  
43  
44  
45  
46  
47  
48  
49  
50  
51  
52  
53  
54  
55  
56  
57  
58  
59  
60

# Determination of modifier contents in polymer- modified bitumens and in samples collected from the roads using high performance gel permeation/size exclusion chromatography

## Abstract

This paper describes application of high performance gel permeation/size exclusion chromatography (HP-GPC/SEC) for the determination of content of polymer modifiers in modified road bitumens. The obtained results were compared with the measurements based on the procedure recommended by the American Association of State Highway and Transportation Officials, which employs Fourier transform mid-infrared spectroscopy (mid-IR FTIR). Two most commonly used modifiers of paving bitumens, namely styrene-butadiene-styrene (SBS) and styrene-butadiene (SB) copolymers as well as modified bitumens sampled from various streets in the city of Gdansk (Poland) were investigated. This work confirmed the ability of GPC/SEC to distinguish modified road bitumens from unmodified ones. The developed methodology is particularly important in quality control of modified bitumens, as well as in arbitration analysis when there is a suspicion that the amount of modifier added to bitumen was lowered or that the material does not meet the specifications concerning the modifier content.

1  
2  
3  
4  
5  
6  
7  
8  
9  
10  
Keywords: polymer modifiers; styrene-butadiene-styrene (SBS); road bitumen; size exclusion chromatography (GPC/SEC); Fourier transform infrared spectroscopy (FTIR); thin layer chromatography coupled with flame ionization detection (TLC-FID)

## 11        **1.        Introduction**

12  
13  
14  
15  
16  
17  
18  
19  
20  
21  
22  
23  
24  
25  
26  
27  
28  
29  
30  
31  
Bitumens belong to the group of thermoplastic and viscoelastic materials. Heated bitumens become soft and undergo a gradual transition from a solid to a liquid, while cooling turns them into a brittle-elastic solid. At intermediate temperatures bitumens exhibit the properties of both a viscous liquid and an elastic solid. The properties of road pavements called asphalts (a mixture of bitumen and aggregates) vary as a function of temperature and duration of use. Therefore, the range of viscoelastic properties of a given bitumen type should be properly matched with the expected temperatures of the bitumen in order to retain its rheological characteristics (Loeber, Muller, Morel & Sutton, 1998).

32  
33  
34  
35  
36  
37  
38  
39  
40  
41  
42  
43  
44  
45  
46  
47  
48  
49  
50  
51  
52  
53  
54  
55  
56  
57  
58  
59  
60  
The climate of Poland has a negative impact on paved surfaces. Traditional asphalts do not fulfill all the expectations of road users. Ruts caused by slowly moving trucks during hot summer months and transverse cracks formed as a result of abrupt temperature drops in winter are a real issue for drivers. Furthermore, asphalt undergoes aging processes when exposed to oxygen, heat and ultraviolet light, resulting in changes of physical properties and chemical structure of asphalts (Lamontagne, Dumas, Mouillet & Kister, 2001; Lu & Isacson, 1998; Ruan, Davison & Glover, 2003; Fernandes, Forte & Leite, 2008; Wang, Razaqpur, Xing & Chen, 2015), as well as, polymer-modifiers added to bitumen (Zhang, Jia, Yu & Xue, 2013; Polacco, Biondi, Stastna, Vlachovicova & Zanzotto, 2004; Airey, 2004). Consequently, the ideal bitumen should possess both a high relative stiffness at high temperatures (summer) to reduce rutting and shoving and an

1  
2  
3 increased adhesion between bitumen and aggregates in the presence of moisture to reduce  
4 stripping (Roberts et al.,1996).  
5  
6

7  
8 The most common method to prevent the aforementioned damage to paved surfaces is the  
9 replacement of traditional bitumens with polymer-modified bitumens, which changes the  
10 interfacial properties of the primary bituminous material (Błażejowski & Styk, 2004). The aim of  
11 bitumen modification is to improve the useful properties of the mixtures of mineral aggregates,  
12 and to extend the expected service life of paved surfaces - asphalts. This requires better  
13 pavement resilience to permanent deformation, cracking, aging, fatigue and the impact of  
14 external factors. Methods based on increasing the angle of internal friction in the mixture of  
15 bitumen and mineral aggregates, i.e. increasing the content of crushed grains and grit, and on  
16 optimizing the binder content and binder consistency do not ensure all the required properties,  
17 particularly in the case of increasing road traffic (Piłat & Radziszewski, 2007).  
18  
19  
20  
21  
22  
23  
24  
25  
26  
27  
28  
29  
30

31  
32 Polymer-modified bitumens used for paving contain a specified amount of modifier in the  
33 form of polymer which was introduced into the bitumen via dedicated technological processes  
34 (Błażejowski & Styk, 2004; Piłat & Radziszewski, 2007). The modification process is based on  
35 crosslinked modifiers at the phase boundary. The final product has properties which improve  
36 pavement resilience to rutting and cracking. Polymer-modified bitumens are mainly used for  
37 paving roads exposed to high volume traffic of heavy vehicles, bridges, roundabouts and  
38 intersections.  
39  
40  
41  
42  
43  
44  
45  
46  
47

48 Application of polymer-modified bitumens increased the need for reliable quality control  
49 procedures determining the content of modifiers in bitumens. This has become one of many tasks  
50 of modern analytical chemistry dealing with the composition of complex mixtures.  
51  
52  
53  
54  
55  
56  
57  
58  
59  
60  
61  
62  
63  
64  
65  
66  
67  
68  
69  
70  
71  
72  
73  
74  
75  
76  
77  
78  
79  
80  
81  
82  
83  
84  
85  
86  
87  
88  
89  
90  
91  
92  
93  
94  
95  
96  
97  
98  
99  
100  
101  
102  
103  
104  
105  
106  
107  
108  
109  
110  
111  
112  
113  
114  
115  
116  
117  
118  
119  
120  
121  
122  
123  
124  
125  
126  
127  
128  
129  
130  
131  
132  
133  
134  
135  
136  
137  
138  
139  
140  
141  
142  
143  
144  
145  
146  
147  
148  
149  
150  
151  
152  
153  
154  
155  
156  
157  
158  
159  
160  
161  
162  
163  
164  
165  
166  
167  
168  
169  
170  
171  
172  
173  
174  
175  
176  
177  
178  
179  
180  
181  
182  
183  
184  
185  
186  
187  
188  
189  
190  
191  
192  
193  
194  
195  
196  
197  
198  
199  
200  
201  
202  
203  
204  
205  
206  
207  
208  
209  
210  
211  
212  
213  
214  
215  
216  
217  
218  
219  
220  
221  
222  
223  
224  
225  
226  
227  
228  
229  
230  
231  
232  
233  
234  
235  
236  
237  
238  
239  
240  
241  
242  
243  
244  
245  
246  
247  
248  
249  
250  
251  
252  
253  
254  
255  
256  
257  
258  
259  
260  
261  
262  
263  
264  
265  
266  
267  
268  
269  
270  
271  
272  
273  
274  
275  
276  
277  
278  
279  
280  
281  
282  
283  
284  
285  
286  
287  
288  
289  
290  
291  
292  
293  
294  
295  
296  
297  
298  
299  
300  
301  
302  
303  
304  
305  
306  
307  
308  
309  
310  
311  
312  
313  
314  
315  
316  
317  
318  
319  
320  
321  
322  
323  
324  
325  
326  
327  
328  
329  
330  
331  
332  
333  
334  
335  
336  
337  
338  
339  
340  
341  
342  
343  
344  
345  
346  
347  
348  
349  
350  
351  
352  
353  
354  
355  
356  
357  
358  
359  
360  
361  
362  
363  
364  
365  
366  
367  
368  
369  
370  
371  
372  
373  
374  
375  
376  
377  
378  
379  
380  
381  
382  
383  
384  
385  
386  
387  
388  
389  
390  
391  
392  
393  
394  
395  
396  
397  
398  
399  
400  
401  
402  
403  
404  
405  
406  
407  
408  
409  
410  
411  
412  
413  
414  
415  
416  
417  
418  
419  
420  
421  
422  
423  
424  
425  
426  
427  
428  
429  
430  
431  
432  
433  
434  
435  
436  
437  
438  
439  
440  
441  
442  
443  
444  
445  
446  
447  
448  
449  
450  
451  
452  
453  
454  
455  
456  
457  
458  
459  
460  
461  
462  
463  
464  
465  
466  
467  
468  
469  
470  
471  
472  
473  
474  
475  
476  
477  
478  
479  
480  
481  
482  
483  
484  
485  
486  
487  
488  
489  
490  
491  
492  
493  
494  
495  
496  
497  
498  
499  
500  
501  
502  
503  
504  
505  
506  
507  
508  
509  
510  
511  
512  
513  
514  
515  
516  
517  
518  
519  
520  
521  
522  
523  
524  
525  
526  
527  
528  
529  
530  
531  
532  
533  
534  
535  
536  
537  
538  
539  
540  
541  
542  
543  
544  
545  
546  
547  
548  
549  
550  
551  
552  
553  
554  
555  
556  
557  
558  
559  
560  
561  
562  
563  
564  
565  
566  
567  
568  
569  
570  
571  
572  
573  
574  
575  
576  
577  
578  
579  
580  
581  
582  
583  
584  
585  
586  
587  
588  
589  
590  
591  
592  
593  
594  
595  
596  
597  
598  
599  
600  
601  
602  
603  
604  
605  
606  
607  
608  
609  
610  
611  
612  
613  
614  
615  
616  
617  
618  
619  
620  
621  
622  
623  
624  
625  
626  
627  
628  
629  
630  
631  
632  
633  
634  
635  
636  
637  
638  
639  
640  
641  
642  
643  
644  
645  
646  
647  
648  
649  
650  
651  
652  
653  
654  
655  
656  
657  
658  
659  
660  
661  
662  
663  
664  
665  
666  
667  
668  
669  
670  
671  
672  
673  
674  
675  
676  
677  
678  
679  
680  
681  
682  
683  
684  
685  
686  
687  
688  
689  
690  
691  
692  
693  
694  
695  
696  
697  
698  
699  
700  
701  
702  
703  
704  
705  
706  
707  
708  
709  
710  
711  
712  
713  
714  
715  
716  
717  
718  
719  
720  
721  
722  
723  
724  
725  
726  
727  
728  
729  
730  
731  
732  
733  
734  
735  
736  
737  
738  
739  
740  
741  
742  
743  
744  
745  
746  
747  
748  
749  
750  
751  
752  
753  
754  
755  
756  
757  
758  
759  
760  
761  
762  
763  
764  
765  
766  
767  
768  
769  
770  
771  
772  
773  
774  
775  
776  
777  
778  
779  
780  
781  
782  
783  
784  
785  
786  
787  
788  
789  
790  
791  
792  
793  
794  
795  
796  
797  
798  
799  
800  
801  
802  
803  
804  
805  
806  
807  
808  
809  
810  
811  
812  
813  
814  
815  
816  
817  
818  
819  
820  
821  
822  
823  
824  
825  
826  
827  
828  
829  
830  
831  
832  
833  
834  
835  
836  
837  
838  
839  
840  
841  
842  
843  
844  
845  
846  
847  
848  
849  
850  
851  
852  
853  
854  
855  
856  
857  
858  
859  
860  
861  
862  
863  
864  
865  
866  
867  
868  
869  
870  
871  
872  
873  
874  
875  
876  
877  
878  
879  
880  
881  
882  
883  
884  
885  
886  
887  
888  
889  
890  
891  
892  
893  
894  
895  
896  
897  
898  
899  
900  
901  
902  
903  
904  
905  
906  
907  
908  
909  
910  
911  
912  
913  
914  
915  
916  
917  
918  
919  
920  
921  
922  
923  
924  
925  
926  
927  
928  
929  
930  
931  
932  
933  
934  
935  
936  
937  
938  
939  
940  
941  
942  
943  
944  
945  
946  
947  
948  
949  
950  
951  
952  
953  
954  
955  
956  
957  
958  
959  
960  
961  
962  
963  
964  
965  
966  
967  
968  
969  
970  
971  
972  
973  
974  
975  
976  
977  
978  
979  
980  
981  
982  
983  
984  
985  
986  
987  
988  
989  
990  
991  
992  
993  
994  
995  
996  
997  
998  
999  
1000

1  
2  
3 is the method of choice to determine low-volatility and non-volatile mixture components. The  
4  
5 application of liquid chromatography is particularly recommended for determining the group-  
6  
7 type composition of bitumens (Gudebska, 1999). Liquid chromatography can also be used for the  
8  
9 determination of bitumen modifiers in asphalts.  
10  
11

12  
13 So far, a procedure using Fourier transform infrared spectroscopy (FTIR) for determining the  
14  
15 content of styrene-butadiene-styrene (SBS), styrene-butadiene rubber (SBR) and styrene-  
16  
17 butadiene (SB) copolymers in modified bitumens has been developed (AASHTO T302-05,  
18  
19 2007). FTIR spectroscopy is well-known technique utilized widely in asphalt technology. It can  
20  
21 be used to determine the presence and approximate content of polymers in an asphalt binder  
22  
23 (Diefenderfer, 2006), to evaluate oxidation levels in bitumens and polymer-modified bitumens  
24  
25 (Yut & Zofka, 2011). The FTIR allows for comparison of different types of bituminous samples  
26  
27 (Zhang, Wang, Wu, Sun & Wang, 2009; Wu, Zeng, Ou, Yu, Lu & Xu, 2010; Izquierdo, Navarro,  
28  
29 Martínez-Boza & Gallegos, 2012). It can be also helpful while explaining interactions occurring  
30  
31 between the polymer modifier and bitumen (Ramalinga Chandra Sekar, Mahendran, Vasudevan  
32  
33 & Velkennedy, 2015) and while investigating the aging resistance characteristics of polymer-  
34  
35 modified birumens (Ouyang, Wang, Yong Zhang & Yinxi Zhang, 2006; Nivitha, Prasad &  
36  
37 Krishnan, 2015). Size exclusion chromatography (GPC/SEC) has also been applied for similar  
38  
39 analyses (Peramanu & Pruden, 1999). This is due to the fact that polymers with high molecular  
40  
41 weights are used as bitumen modifiers. Furthermore, GPC/SEC is a technique commonly used in  
42  
43 many aspects of bitumen analytics (Doh, Amir Khanian & Kim, 2008; K.W. Kim, K. Kim, Doh,  
44  
45 & Amir Khanian, 2006). Thin layer chromatography coupled with flame ionization detection  
46  
47 (TLC-FID) also seems to be useful for determining the modifier content. However, its major  
48  
49 application is determination of the group composition (Paliukaitė, Vaitkus & Zofka, 2014;  
50  
51  
52  
53  
54  
55  
56  
57  
58  
59  
60

1  
2  
3 Kamiński, Gudebska, Górecki & Kartanowicz, 2003; Ecker, 2001; Masson, Price & Collins,  
4  
5  
6 2001) – a so-called SARA (Saturates, Aromatics, Resins, Asphaltenes).  
7

8 In the current Polish standard PN EN 14023, describing the classification rules for polymer-  
9  
10 modified bitumens, the determination of modifier content is not required (PN EN 14023, 2009).  
11  
12 Modified bitumens are on average 20 to 25% more expensive than traditional bitumens. Because  
13  
14 of that, adulteration of modified bitumens by lowering the required content of modifiers is quite  
15  
16 probable. Lack of monitoring of the amount of modifier used in paved surfaces makes tampering  
17  
18 even more likely. Liquid chromatography, especially SEC, could be used for the determination  
19  
20 of modifier content in bitumens. It should be noted, however, that for some purposes only highly  
21  
22 selective and highly orthogonal separation systems can provide a satisfactory separation of the  
23  
24 analytes allowing their quantitative analysis (Boczkaj, Jaszczółt, Przyjazny & Kamiński, 2013;  
25  
26 Gilgenast, Boczkaj, Przyjazny & Kamiński, 2011).  
27  
28  
29  
30

31 In the light of the above facts, the development of the procedure for determining modifiers in  
32  
33 bitumens is very important. In addition, the information about the actual amount of ground  
34  
35 polymer added is important from the point of view of quality control. The basic principle of  
36  
37 quality control concerning addition of modifiers is based on fluorescence microscopy. However,  
38  
39 this technique only allows assessment of the technology, but does not allow determining the  
40  
41 content of modifier added.  
42  
43  
44

45 In contrast, this work provides the procedure for the determination of the content of modifier,  
46  
47 but does provide any information on whether the modifier occurs in a granular form.  
48  
49 Nevertheless, the methodology presented in this paper can be used in quality control laboratories  
50  
51 as well as in process analytics, as a tool for the control of modifier content in road pavements.  
52  
53  
54  
55  
56  
57  
58  
59  
60

1  
2  
3 The results and conclusions of these investigations should also contribute to the identification of  
4 adulterated modified bitumens.  
5  
6

## 7 8 **2. Materials and methods**

### 9 10 **2.1. Materials**

11  
12 The standards used: polystyrene (1,260,000 Da, 120,000 Da, 30,300 Da, 2,450 Da) and  
13 benzene were purchased from Merck (Germany), SBS (styrene-butadiene-styrene) and SB  
14 (styrene-butadiene) – both from Polish manufacturer. The eluents/solvents used in the  
15 investigations – dichloromethane, methanol and toluene (POCH, Poland) were analytically pure  
16 and tetrahydrofuran (Merck, Germany) was of HPLC grade. The chromatographic columns  
17 employed during the experiments were: two 250 x 7 mm LiChrogel PS1 (5 µm) columns  
18 (Merck, Germany) and two 250 x 7 mm LiChrogel PSMix columns (Merck, Germany). The  
19 PTFE disc filters (0.45µm) were purchased from Merck (Germany).  
20  
21  
22  
23  
24  
25  
26  
27  
28  
29  
30  
31

### 32 **2.2. Apparatus**

33  
34 A Merck–Hitachi (Darmstadt, Germany) gradient liquid chromatograph equipped with an L-  
35 7100 four-channel pump, a 7450A UV-Vis diode array detector, a RID 7490 refractive index  
36 detector, a 7350 thermostat with a 7350i cooling system, a Rheodyne model RH-7725i injector  
37 with a 20-µL sample loop, a V7226 six-port two-position backflush valve (Knauer, Berlin,  
38 Germany) to switch the flow direction of the mobile phase, were used in the present work.  
39  
40  
41  
42  
43  
44  
45  
46

47 A FTIR NICOLET 8700 (Thermo Electron Corporation) spectrometer with Specac Golden  
48 Gate ATR accessory; an analytical balance (RADWAG Poland); an XL ultrasonic bath, a 2020  
49 Sonificator® Misonix (USA) and a rotary evaporator Heidolph (Germany) were used.  
50  
51  
52  
53

54 An Iatroscan (Iatron Labs, Japan) TLC-FID analyzer equipped with Chromarod-S III rods was  
55 also used. Additional equipment included: an automated sample dispenser SES 3200/IS-01, a  
56  
57  
58  
59  
60

1  
2  
3 TLC rods dryer model TK-8, an analogue-to-digital converter and software for data processing  
4  
5 (Elkor, Poland).  
6  
7

## 8 **2.3 Samples**

9

10  
11 Unmodified bitumens: 35/50, 160/220 and modified bitumens: 25/55-60, 45/80-55 (from  
12 international supplier of bitumens) were examined. In addition, samples of asphalt from streets  
13 paved at different times (year: 2006, 2007, 2008) were investigated. The latter samples were  
14 taken from various streets in Gdansk, Poland (see Fig. 1), namely:  
15  
16  
17  
18

- 19  
20  
21 ➤ modified bitumen samples were taken from: Marynarki Polskiej Street (year 2006),  
22 Grunwaldzka Street (year 2007) and Cienista Street (year 2008);
- 23  
24  
25 ➤ unmodified bitumen samples – from: Spacerowa Street (year 2006), Źródłana Street  
26 (year 2007) and Kampinoska Street (year 2008).  
27  
28  
29

## 30 **2.4 Procedure**

31

### 32 **2.4.1. Sample preparation**

33

#### 34 **a) Road pavement samples**

35  
36  
37

38  
39 Six samples of modified and unmodified bitumens were collected in the Gdansk area at  
40 different time points during the road construction. Samples (3-5 grams) were taken from the  
41 depth of 1 cm (sample width ca. 1 cm).  
42  
43  
44  
45  
46

#### 47 **b) Bitumen solutions**

48  
49

50  
51 The size-reduced samples (approximately 2.5 g) of collected road pavements were transferred  
52 into pre-weighed 10-mL vials and subjected to ultrasound-assisted extraction with an organic  
53 solvent - dichloromethane (DCM) for 10 minutes. The extraction was then continued until the  
54  
55  
56  
57  
58  
59  
60



1  
2  
3 mineral aggregates turned clean and bitumen was visibly dissolved. The undissolved material  
4 was vacuum filtered onto 90 mm disc filters which were subsequently washed a couple of times  
5 with dichloromethane. The filtrates were transferred into pre-weighed 100-mL round-bottom  
6 flasks and evaporated to dryness in a rotary evaporator at 40 °C. Finally, the flasks were dried in  
7 a laboratory dryer for 30 min at 120 °C and the obtained samples (of known mass) were  
8 dissolved in THF for GPC/SEC.  
9

#### 10 11 12 13 14 15 16 17 18 **2.4.2 Infrared Spectroscopy (FT-IR)**

19  
20 Spectral analysis was performed by using the attenuated total reflectance (ATR) technique  
21 according to the modified procedure described in standard AASHTO T 302-05 (2007). Total  
22 reflectance is achieved by directing a beam of infrared radiation onto the side of a diamond  
23 optical element that constitutes the main part of a Golden Gate accessory. Samples in a solid  
24 state were placed on the surface of a crystal (diamond). Spectra were recorded at a 4cm<sup>-1</sup>  
25 resolution by averaging 32 measurements in the range from 4000 cm<sup>-1</sup> to 500 cm<sup>-1</sup>. The  
26 maximum absorbance for bitumen should be at ca. 1375 cm<sup>-1</sup>, while the peak having a maximum  
27 at 975 cm<sup>-1</sup> indicates the presence of SB or SBS.  
28  
29  
30  
31  
32  
33  
34  
35  
36  
37  
38

#### 39 40 41 42 **2.4.3 Size Exclusion Chromatography (GPC/SEC)**

43 Two PS-MIX (250×7 mm, d<sub>p</sub> = 5µm) and two PS-1 (250×7 mm, d<sub>p</sub> = 5µm) columns with  
44 tetrahydrofuran as the mobile phase, and a refractive index and a UV-DAD detectors connected  
45 in series were used in this study. All samples were separated at 20 °C. The mobile phase flow  
46 rate was 1 mL/min and the injection volume was 20 µL. The solutions were filtered through  
47 0.45-µm PTFE membrane filters. For the determination of molecular mass, calibration curves  
48 were prepared by using molecular mass standards with known masses (1,260,000 Da, 120,000  
49 Da, 30,300 Da, 2,450 Da, benzene). To determine the modifiers in bitumens, calibration curves  
50  
51  
52  
53  
54  
55  
56  
57  
58  
59  
60

1  
2  
3 were prepared by using solutions of bitumens in THF at 50 mg/mL with the following modifier  
4 concentrations: 1% SBS, 3% SBS, 5% SBS, 7% SBS. An analogous series of solutions was  
5 prepared using bitumens modified with SB.  
6  
7  
8  
9

#### 10 **2.4.4 Thin Layer Chromatography Coupled with Flame Ionization Detection (TLC-FID)**

11  
12 Separation of bitumens was performed according to a modified procedure published previously  
13 (Gudebska, 1999). During bitumen separation, an optimization procedure was carried out – the  
14 flow rates of hydrogen and air were changed prior to analysis of each of the ten chromarods –  
15 and the optimum flow rates for hydrogen ( $150 \text{ mL min}^{-1}$ ) and for air ( $1.8 \text{ L min}^{-1}$ ) were selected.  
16  
17  
18  
19  
20  
21  
22

23 Chromarods were activated by passing them through a TLC-FID analyzer using a hydrogen  
24 flame just before sample application. Activated rods were spotted with  $1 \mu\text{L}$  of sample solution  
25 containing:  $10 \text{ mg asphalt mL}^{-1}$  dichloromethane and  $1 \text{ mg SBS mL}^{-1}$  dichloromethane, using a  $2$ -  
26  $\mu\text{L}$  microsyringe. After application of spots, the rods were dried for 2 minutes in an oven at  $70^\circ\text{C}$   
27 and placed for 10 minutes in a desiccator. Next, the rod holder carrying the chromarods was  
28 placed in a TLC chamber containing the solvent – a mixture of dichloromethane: methanol 95:5  
29 (v/v). Elution was carried out to a height of 2.5 cm. The rod holder was put in an oven at  $70^\circ\text{C}$   
30 for 2 minutes and then placed in a desiccator for 10 minutes, and after that – for 10 minutes in a  
31 TLC chamber containing toluene where the chromarods were developed up to a height of 6 cm.  
32 Next, the rod holder was transferred to an oven for 2 minutes, then to a desiccator for 10  
33 minutes, and finally it was placed in the TLC chamber containing hexane for 5 min where the  
34 elution was carried out to a height of 10 cm.  
35  
36  
37  
38  
39  
40  
41  
42  
43  
44  
45  
46  
47  
48  
49  
50

51 Detection was carried out by the FID detector with digital acquisition of the detector signal.  
52  
53

#### 54 **2.4.5 Determination of SB and SBS**

1  
2  
3 Analytical conditions were optimized using solutions of road bitumen having concentrations of  
4 0.05 g/mL and of modifiers of 0.005 g/mL in tetrahydrofuran (for GPC analysis). Next, the  
5 samples were prepared according to the procedure described in „Sample preparation FT-IR and  
6 GPC/SEC”.

7  
8  
9  
10  
11  
12 The limit of quantitation (LOQ) was taken as the concentration corresponding to the signal five  
13 times as great as the noise corrected for the recovery. The LOQ values (the lowest concentration  
14 of modifier that could be determined using the developed procedure) for SBS and SB were  
15 0.46% and 0.38%, respectively. The determination of polymer content in bitumens was carried  
16 out by the external standard method. Four-point calibration curves were prepared using solutions  
17 of modified bitumens with known modifier concentrations in a typical range of 1-7%. Each  
18 determination was repeated five times. The peak area of modifiers in real samples was  
19 determined using a so-called “drop” integration method and the same method was applied for the  
20 preparation of the calibration curve. Drop method is based on drawing a perpendicular line to the  
21 baseline from the “valley” between the chromatographic peaks which are not separated.

22  
23  
24  
25  
26  
27  
28  
29  
30  
31  
32  
33  
34  
35  
36  
37  
38  
39  
40  
41  
42  
43  
44  
45  
46  
47  
48  
49  
50  
51  
52  
53  
54  
55  
56  
57  
58  
59  
60  
In case of calibration curve preparation, the applied “drop” method enabled to obtain  
satisfactory values of determination coefficient ( $R^2$ ) within the “practical” range of  
concentrations presented in the paper. It confirms the correctness of determinations performed  
with the use of the calibration curve.

#### 2.4.6 Quality control, quality assurance

Statistical studies were carried out using Microsoft Excel Data Analysis ToolPak. The  
following parameters were calculated: the arithmetic mean, standard deviation (SD), relative  
standard deviation (RSD), limit of repeatability and parameters describing the regression, i.e. the

1  
2  
3 value of the slope and correlation coefficients. The results are reported as the mean value from at  
4  
5 least five independent measurements, in which the difference did not exceed 5%.  
6  
7

### 8 **3. Results and discussion**

#### 9 10 **3.1 Infrared spectroscopy (FT-IR)**

11  
12 Attenuated total reflection (ATR) infrared spectroscopy was used to perform spectral analysis  
13  
14 of the samples (see Fig.2).  
15

16  
17 Spectral analysis confirmed the presence of alkyl groups as evidenced by the C-H stretching  
18  
19 vibrations in the  $3000\text{--}2850\text{ cm}^{-1}$  region. No bands were detected for the wavenumber values  
20  
21 greater than  $3000\text{ cm}^{-1}$ . Inspection of the  $1760\text{--}1665\text{ cm}^{-1}$  range (carbonyl band position)  
22  
23 revealed no evidence for the presence of carboxylic, ester, aldehyde, amide and ketone groups.  
24  
25

26  
27 The following characteristic bands were observed:  
28

- 29 ✓ C-H stretching from  $3000\text{ to }2850\text{ cm}^{-1}$ ,
- 30 ✓ C-H bending or scissoring from  $1470\text{ to }1450\text{ cm}^{-1}$ ,
- 31 ✓ C-H rocking from  $1370\text{ to }1350\text{ cm}^{-1}$ .

32  
33  
34  
35  
36 Bands in the  $1300\text{--}900\text{ cm}^{-1}$  region, which is called the fingerprint region, originated from  
37  
38 skeletal vibrations and formed a complex picture. In general, it is difficult to interpret bands in  
39  
40 this particular region. However, each organic compound has its unique pattern, the so-called  
41  
42 fingerprint, which can be used for its identification by comparing the compound's fingerprint  
43  
44 with the fingerprint of the selected standard reference material (AASHTO T302-05, 2007). In the  
45  
46 case of reference standards such as SBS and SB, the characteristic region occurs at  $965\text{ cm}^{-1}$  and  
47  
48  $697\text{ cm}^{-1}$ , respectively. The SBS band is split, while no such feature occurs in the case of SB  
49  
50 (Fig. 3). The polymers in the analyzed samples could not be positively identified because their  
51  
52 content was too low and the absorption bands were blurred.  
53  
54  
55  
56  
57  
58  
59  
60

1  
2  
3 The contents of modifiers were determined from a calibration curve (Fig. 4 prepared on the  
4 basis of data listed in Table 1) for the characteristic regions ( $R^2=0.9998$ ; absorbance =  
5  $f(\text{concentration of modifier}): (A1/A2) = 0.031c + 0.0286$ ).  
6  
7  
8  
9

10 The concentrations of modifiers determined in all the examined samples are listed in Table 2.  
11

### 12 13 **3.2 Size exclusion chromatography (GPC/SEC)** 14

15 Examples of chromatograms of selected bitumens (including those from road pavement) are  
16 shown in Figures 5 and 6, while Figure 7 presents chromatograms of the mixtures containing  
17 polystyrenes and the analyzed modifiers.  
18  
19  
20  
21

22 The chromatograms of modified bitumens reveal an additional peak compared to the  
23 chromatograms of unmodified bitumens. The peak is attributed to the presence of a modifier  
24 (Fig. 5a) and has a lower retention due to the high molecular weight of the compound (Fig. 7).  
25 The obtained molecular weight of ca. 550 kDa is not the true molecular weight of the analyzed  
26 polymer, but its relative molecular weight with respect to the molecular weight of polystyrene.  
27  
28  
29  
30  
31  
32  
33

34 The GPC/SEC molecular weight distribution calibration curve ( $\log M = f(V_e)$ ) presented in  
35 Fig. 8 (blue curve) was prepared on the basis of Fig. 7a. The five points (blue dots in Fig. 8)  
36 indicated on the calibration curve refer to the obtained values of  $\log M = f(V_e)$  of  
37 polystyrenes of masses: 1,260,000, 120,000, 30,300, 2,450 Da and to acetone (58 Da). The  
38 average molecular weights for the modifier and bitumens were calculated from the equation:  $\log$   
39  $M = -0.4656V_e + 13.31$ . Using the GPC/SEC chromatograms in Fig. 5-7, it was possible to  
40 indicate on the calibration curve the ranges of elution volume characteristic of the modifier  
41 (purple line) and bitumen (black lines). Since the chromatographic peaks for bitumen (Fig. 5, 6)  
42 are not typical because they split into two fractions, there are two black lines in Fig. 8. It is likely  
43 that the first fraction (counting from right to left) represents bitumen sample components with  
44  
45  
46  
47  
48  
49  
50  
51  
52  
53  
54  
55  
56  
57  
58  
59  
60

1  
2  
3 lower molecular weights, while the second is the result of oxidation and polymerization process  
4 and contains sample components with higher molecular weights. It was not possible to present  
5  
6 separately the  $V_e$  ranges for two types of the examined modifiers (SBS and SB) due to their  
7  
8 similar molecular weights. Therefore, size exclusion chromatography is not an appropriate  
9  
10 technique to distinguish these two modifiers.  
11  
12  
13

14  
15 A calibration curve (Fig. 9 prepared on the basis of data listed in Table 3) used for the  
16  
17 determination of modifier concentration was constructed based on the GPC/SEC measurements  
18  
19 made for four 35/50 bitumen solutions with increasing polymer contents, namely, 1, 3, 5 and 7%  
20  
21 ( $R^2=0.9844$ , peak area = f(concentration of modifier):  $A = 149295c + 201.45$ ). The obtained  
22  
23 results, including descriptive statistics, are presented in Table 4. A comparison of  
24  
25 chromatograms of unmodified and modified asphalts, both “unused” samples (obtained from the  
26  
27 manufacturer) and samples collected from the roads reveals that the analytical signal in the range  
28  
29 of the expected value of the modifier retention time was obtained only in the case of modified  
30  
31 bitumen samples. According to the obtained results, both steps, *i.e.*, sample preparation  
32  
33 procedure and chromatographic analysis, proved to be optimal for the intended use of the  
34  
35 methodology presented in this study. In this way, the ability of GPC/SEC to distinguish modified  
36  
37 road bitumens from unmodified ones was confirmed. The procedure developed in this work is  
38  
39 particularly important in quality control measurements of modified bitumens as well as in  
40  
41 comparative and arbitration analysis whenever there is a suspicion that the amount of modifier  
42  
43 added to bitumen was lowered by the manufacturer or when there is a suspicion that the  
44  
45 delivered material does not meet the specifications concerning the modifier content. Moreover,  
46  
47 the procedure described here is also applicable to the assessment of aging of road asphalts and  
48  
49 their degradation during usage.  
50  
51  
52  
53  
54  
55  
56  
57  
58  
59  
60

1  
2  
3 As was the case of ATR infrared spectroscopy measurements, sample 1 again displayed a  
4 lowered content of modifier when assayed by GPC/SEC. A comparison of the results obtained  
5 by FTIR and GPC/SEC shown in Tables 2 and 4 reveals that the differences between the two  
6 procedures for the average modifier content in each of the investigated bitumens are within the  
7 repeatability of the FTIR method. Consequently, the developed GPC/SEC procedure is a viable  
8 alternative to FTIR while offering an improved precision of the determinations as indicated by  
9 substantially lower relative standard deviation values.  
10  
11  
12  
13  
14  
15  
16  
17  
18  
19

### 20 **3.3 Thin layer chromatography coupled with flame ionization detection (TLC-FID)**

21 Table 5 summarizes the differences in group composition content resulting from the presence  
22 of the modifier. For unmodified bitumen 35/50, it can be noticed that the most abundant group  
23 are aromatic compounds (49.99%), followed by resins (21.58 %) and saturated compounds  
24 (21.27 %). In contrast, modified bitumen 25/55-60 shows significant differences in the group  
25 composition, caused by the presence of the modifier.  
26  
27  
28  
29  
30  
31  
32  
33  
34

35 The TLC-FID technique is not useful for the determination of asphalt modifiers; however, it  
36 allows determining the group composition of bitumens. Comparing the results of each fraction  
37 content for both types of bitumen one can observe a decrease in aromatic compounds content and  
38 an increase in resin content in a modified bitumen sample (Table 5). These changes result from  
39 the polymer presence, because SBS – due to the presence of aromatic rings in polystyrene and  
40 the double bonds in polybutadiene – has a greater affinity to aromatic and resin fractions.  
41 Differences in group-type composition after bitumen modification may result from the  
42 conversion of bitumen constituents. SBS probably binds aromatic molecules in a molecular  
43 network, causing an increase in their weight and, therefore, shifting them to the resin fraction  
44 region.  
45  
46  
47  
48  
49  
50  
51  
52  
53  
54  
55  
56  
57  
58  
59  
60

1  
2  
3 The polymer applied at a high concentration on the chromatods was not separated and  
4 remained at the start along with some part of the asphaltene fraction. Another attempt with a  
5 lower concentration of a polymer sample showed the presence of the signal which had the  
6 highest intensity in the range of aromatic fractions. At a high concentration (greater than 30 mg  
7 ml<sup>-1</sup>) of the polymer there is a problem of polymer solubility. The mobile phase used for  
8 chromatogram development is a mixture of dichloromethane-methanol 95/5 (v/v) and the  
9 polymer is insoluble in methanol. Consequently, the presence of methanol causes SBS stoppage  
10 at the start. This limitation is only theoretical due to a relatively low concentration of the  
11 modifier in commercial bitumens.  
12  
13  
14  
15  
16  
17  
18  
19  
20  
21  
22  
23

#### 24 **4. Conclusions**

25  
26 The concept of using infrared spectroscopy for determining the content of polymer modifiers  
27 in road bitumens is valid, as supported by the published literature. Such polymer modifiers as  
28 styrene-butadiene-rubber (SBR), styrene-butadiene-styrene (SBS) and styrene-butadiene (SB)  
29 are characterized by the specific band regions at 965cm<sup>-1</sup> and 697 cm<sup>-1</sup>. The SBS band at 965  
30 cm<sup>-1</sup> is split in contrast with the SB modifier. A positive identification of individual polymers in  
31 the analyzed samples of paving bitumens was not possible due to low analyte content and the  
32 significantly blurred bands.  
33  
34  
35  
36  
37  
38  
39  
40  
41  
42

43 The studies revealed that infrared spectroscopy should be appended with the size exclusion  
44 chromatography, as the latter results in repeatable measurements with smaller errors.  
45  
46  
47

48 The developed procedure for the determination of polymer modifiers in paving bitumens by  
49 size exclusion chromatography requires the use of four columns connected in series, i.e. two PS1  
50 columns and two PS Mix columns packed with a styrene-divinylbenzene copolymer, and  
51 tetrahydrofuran as the eluent. This procedure allows the separation of modifiers from other  
52  
53  
54  
55  
56  
57  
58  
59  
60



1  
2  
3 bitumen components, as well as the determination of modifier content. However, size exclusion  
4 chromatography does not allow simultaneous identification of SBS and SB modifiers present in  
5  
6 the same sample because the difference between the molecular weights of these polymers is too  
7  
8 small.  
9  
10

11  
12 In addition, the studies carried out using thin layer chromatography coupled with flame  
13 ionization detection have demonstrated that this technique is useful for determining the  
14 composition of modified bitumens. Modified bitumens contain more so-called resins and less  
15 aromatic compounds than unmodified bitumens. This is due to structural changes in aromatic  
16 hydrocarbons interacting with polymer molecules. The TLC-FID technique does not allow the  
17 determination of the modifier content in bitumen samples because the modifier is eluted in the  
18 range of aromatic compounds and resins. Furthermore, the application of the procedure described  
19 in Polish standard PN EN 129161 (2008) using NP-HPLC also did not allow the measurement of  
20 the polymer content. In this case, the failure was caused by poor solubility of polymer modifiers  
21 in the eluent used. The developed procedures also allow determining the modifier content in road  
22 bitumens already used for road paving, as well as the rate of degradation of the modifier during  
23 its use.  
24  
25  
26  
27  
28  
29  
30  
31  
32  
33  
34  
35  
36  
37  
38  
39

40  
41 This paper describes the methodological basis for the determination of modifiers content in  
42 bitumen samples collected from the roads. It is the first work allowing to perform such  
43 determination using gel permeation/size exclusion chromatography (GPC/SEC). The developed  
44 methodology will be used for monitoring the changes of modifier concentration in bitumens  
45 during road pavement aging, as well as, for comparative studies of modified bitumen supplied by  
46 different manufacturers. The results of this research will be the subject of subsequent papers.  
47  
48  
49  
50  
51  
52  
53  
54  
55  
56  
57  
58  
59  
60

## References

- AASHTO T302-05. (2007). Standard Method of Test for Polymer Content of Polymer-Modified Emulsified Asphalt Residue and Asphalt Binders.
- Airey, G.D. (2004). Styrene butadiene styrene polymer modification of road bitumens. *Journal of Materials Science*, 39, 951–959.
- Błażejowski, K. & Styk, S. (2004). *Technologia warstw asfaltowych* [Technology of asphalts]. Warszawa: Wydawnictwo Komunikacji i Łączności (in Polish).
- Boczkaj, G., Jaszczolt, M., Przyjazny, A. & Kamiński, M. (2013). Application of normal phase high performance liquid chromatography followed by gas chromatography for analytics of diesel fuel additives, *Analytical and Bioanalytical Chemistry*, 405, 6095–103.
- Diefenderfer, S. (2006). Detection of Polymer Modifiers in Asphalt Binder. Final report no. FHWA/VTRC 06-R18, Virginia Transportation Research Council in Cooperation with the U.S. Department of Transportation, available at: [http://www.virginiadot.org/vtrc/main/online\\_reports/pdf/06-r18.pdf](http://www.virginiadot.org/vtrc/main/online_reports/pdf/06-r18.pdf)
- Doh, Y. S., Amirkhanian, S. N. & Kim, K. W. (2008). Analysis of unbalanced binder oxidation level in recycled asphalt mixture using GPC. *Construction and Building Materials*, 22(6), 1253–1260.
- Ecker, A. (2001). The application of IATROSCAN-technique for analysis of bitumen. *Petroleum and Coal*, 43(1), 51–53.
- Fernandes, M.R.S., Forte, M.M.C. & Leite, L.F.M. (2008). Rheological Evaluation of Polymer-Modified Asphalt Binders. *Materials Research*, 11(3), 381–386.

1  
2  
3 Gilgenast, E., Boczkaj, G., Przyjazny, A. & Kamiński M. (2011). Sample preparation  
4  
5 procedure for the determination of polycyclic aromatic hydrocarbons in petroleum  
6  
7 vacuum residue and bitumen, *Analytical and Bioanalytical Chemistry*, 401, 1059-69.  
8  
9

10 Gudebska, J. (1999). *Chromatografia cieczowa w oznaczaniu składu grupowego olejów*  
11  
12 *bazowych i asfaltów drogowych* [Base oil and road bitumens group-type composition  
13  
14 studies by means of liquid chromatography]. PhD thesis, Gdańsk University of  
15  
16 Technology, Gdańsk (in Polish).  
17  
18  
19

20 Izquierdo, M.A., Navarro, F.J., Martínez-Boza, F.J. & Gallegos, C. (2012). Bituminous  
21  
22 polyurethane foams for building applications: Influence of bitumen hardness.  
23  
24 *Construction and Building Materials*, 30, 706–713.  
25  
26

27 Kamiński, M., Gudebska, J., Górecki, T. & Kartanowicz, R. (2003). Optimized conditions for  
28  
29 hydrocarbon group type analysis of base oils by thin-layer chromatography–flame  
30  
31 ionisation detection. *Journal of Chromatography A*, 991, 255–266.  
32  
33  
34

35 Kim, K.W., Kim, K., Doh, Y.S. & Amirkhanian, S.N. (2006). Estimation of RAP's binder  
36  
37 viscosity using GPC without binder recovery. *Journal of Materials in Civil Engineering*,  
38  
39 *18(4)*, abstract.  
40  
41

42 Lamontagne, J., Dumas, P., Mouillet, V. & Kister, J. (2001). Comparison by Fourier  
43  
44 transform infrared (FTIR) spectroscopy of different ageing techniques: application to  
45  
46 road bitumens. *Fuel*, 80, 483–8.  
47  
48

49 Loeber, L., Muller, G., Morel, J. & Sutton, O. (1998). Bitumen in colloid science: a chemical,  
50  
51 structural and rheological approach. *Fuel*, 77, 1443–50.  
52  
53  
54

55 Lu, X. & Isacson, U. (1998). Chemical and rheological evaluation of ageing properties of  
56  
57 SBS polymer modified bitumens. *Fuel*, 77, 961–72.  
58  
59  
60

1  
2  
3 Masson, J-F., Price, T. & Collins, P. (2001). Dynamics of Bitumen Fractions by Thin-Layer  
4  
5 Chromatography/Flame Ionization Detection. *Energy & Fuels*, 15, 955–960.  
6

7  
8 Nivitha, M.R., Prasad, E. & Krishnan, J.M. (2015). Ageing in modified bitumen using FTIR  
9  
10 spectroscopy. *International Journal of Pavement Engineering*, first page preview,  
11  
12 <http://dx.doi.org/10.1080/10298436.2015.1007230>  
13

14  
15 Ouyang, Ch., Wang, S., Zhang, Yong & Zhang, Yinxi (2006). Improving the aging resistance  
16  
17 of styrenebutadieneestyrene tri-block copolymer modified asphalt by addition of  
18  
19 antioxidants. *Polymer Degradation and Stability*, 91, 795–804.  
20

21  
22  
23 Paliukaitė, M., Vaitkus A. & Zofka, A. (2014). Evaluation of bitumen fractional composition  
24  
25 depending on the crude oil type and production technology. *The 9th International*  
26  
27 *Conference Environmental Engineering. Selected Papers, Article number:*  
28  
29 *enviro.2014.162.*  
30

31  
32  
33 Peramanu, S. & Pruden, B.B. (1999). *Industrial & Engineering Chemistry Research*, 38,  
34  
35 3121–3122.  
36

37  
38 Piłat, J. & Radziszewski, P. (2007). *Nawierzchnie asfaltowe* [Asphalt surfaces]. Warszawa:  
39  
40 Wydawnictwo Komunikacji i Łączności (in Polish).  
41

42  
43 PN-EN 12916. (2008). *Przetwory naftowe. Oznaczanie grup węglowodorów aromatycznych w*  
44  
45 *średnich destylatach. Metoda wysokosprawnej chromatografii cieczowej z detektorem*  
46  
47 *współczynnika załamania światła* [Petroleum products. Determination of aromatic  
48  
49 hydrocarbon types in middle distillates. High performance liquid chromatography method  
50  
51 with refractive index detection] (in Polish).  
52  
53  
54  
55  
56  
57  
58  
59  
60

1  
2  
3 PN-EN 14023. (2009). *Asfalty i lepiszcza asfaltowe, Zasady klasyfikacji asfaltów*  
4  
5 *modyfikowanych polimerami* [Bitumen and bituminous binders. Specification Framework  
6  
7 for polimer modified bitumens] (in Polish).  
8  
9

10 Polacco, G., Biondi, D., Stastna, J., Vlachovicova Z. & Zanzotto, L. (2004). Effect of SBS on  
11  
12 Rheological Properties of Different Base Asphalts. *Macromolecular Symposia*, 218, 333–  
13  
14 342.  
15  
16

17 Ramalinga Chandra Sekar, A., Mahendran, M., Vasudevan, R. & Velkennedy, R. (2015).  
18  
19 Polymer modified bitumen prepared using abs polymer characterization and application in  
20  
21 flexible pavement. *ARPJ Journal of Engineering and Applied Sciences*, 10(8), 1819–  
22  
23 6608.  
24  
25  
26

27 Roberts F.L. et al. (1996). *Hot Mix Asphalt Materials, Mixture Design and Construction*,  
28  
29 second ed., National Center for Asphalt Technology (NCAT).  
30  
31

32 Ruan, Y., Davison, R.R. & Glover, C.J. (2003). The effect of long-term oxidation on the  
33  
34 rheological properties of polymer modified asphalts, *Fuel*, 82, 1763–73.  
35  
36  
37

38 Wang, L., Razaqpur, G., Xing Y. & Chen G. (2015). Microstructure and rheological  
39  
40 properties of aged and unaged polymer-modified asphalt binders. *Road Materials and*  
41  
42 *Pavement Design*, 16(3), 592–607.  
43  
44

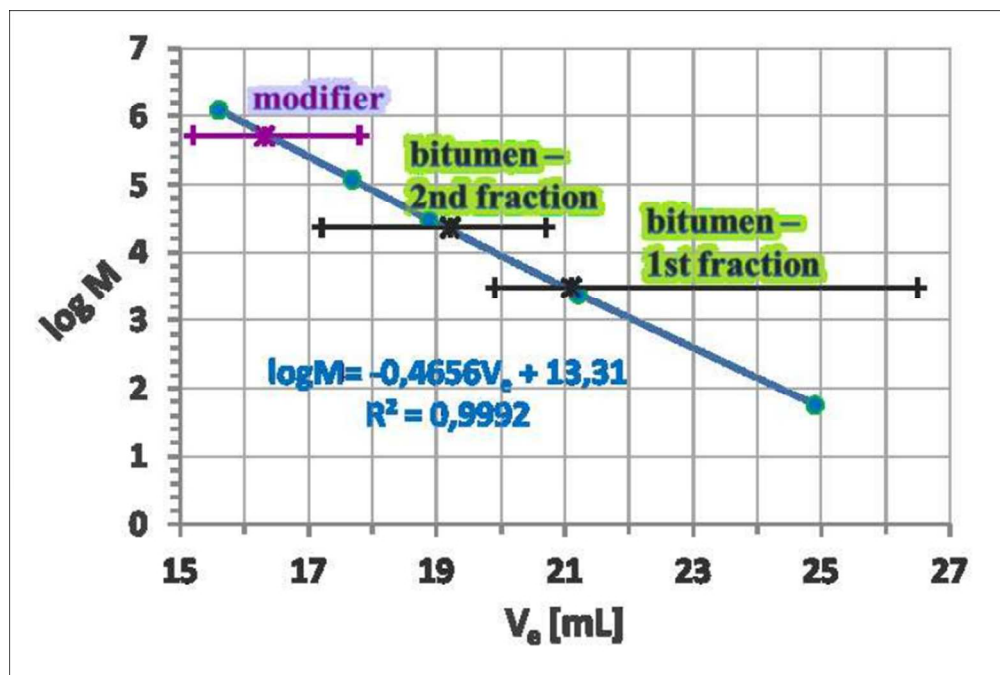
45 Wu, G., Zeng, S., Ou, E., Yu, P., Lu, Y. & Xu, W. (2010). Photoinitiator grafted styrene–  
46  
47 butadiene–styrene triblock copolymer. *Materials Science & Engineering C*, 30, 1030–  
48  
49 1037.  
50  
51

52 Yut, I. & Zofka, A. (2011). Attenuated total reflection (ATR) Fourier transform infrared (FT-  
53  
54 IR) spectroscopy of oxidized polymer-modified bitumens. *Applied Spectroscopy* 65:7,  
55  
56 abstract. doi: 10.1366/10-06217.  
57  
58  
59  
60

1  
2  
3 Zhang, J., Wang, J., Wu, Y., Sun, W. & Wang, Y. (2009). Thermal Behaviour and Improved  
4  
5 Properties of SBR and SBR/Natural Bitumen Modified Bitumens. *Iranian Polymer*  
6  
7 *Journal*, 18(6), 465-478.  
8  
9

10 Zhang, H., Jia, X., Yu, J. & Xue L. (2013). Effect of expanded vermiculite on microstructures  
11  
12 and aging properties of styrene-butadiene-styrene copolymer modified bitumen.  
13  
14 *Construction and Building Materials*, 40, 224-230.  
15  
16  
17  
18  
19  
20  
21  
22  
23  
24  
25  
26  
27  
28  
29  
30  
31  
32  
33  
34  
35  
36  
37  
38  
39  
40  
41  
42  
43  
44  
45  
46  
47  
48  
49  
50  
51  
52  
53  
54  
55  
56  
57  
58  
59  
60

For Peer Review Only



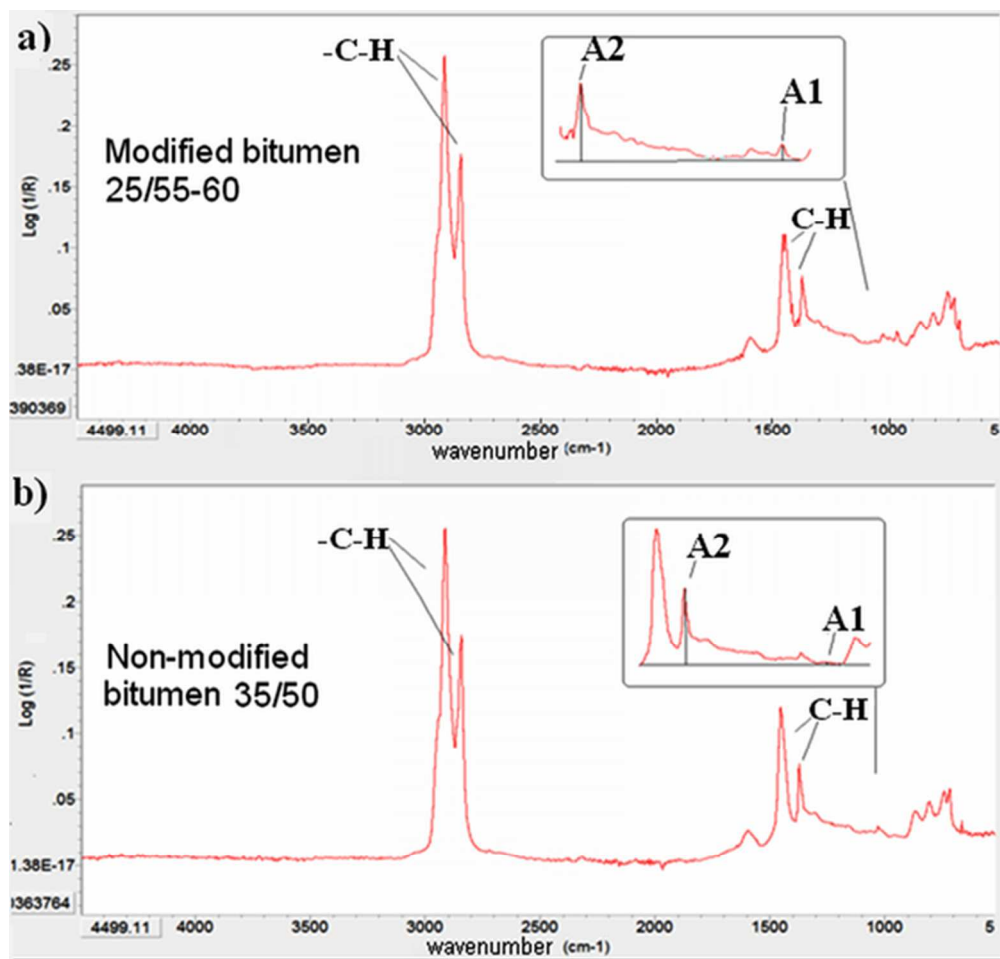
230x155mm (96 x 96 DPI)

1  
2  
3  
4  
5  
6  
7  
8  
9  
10  
11  
12  
13  
14  
15  
16  
17  
18  
19  
20  
21  
22  
23  
24  
25  
26  
27  
28  
29  
30  
31  
32  
33  
34  
35  
36  
37  
38  
39  
40  
41  
42  
43  
44  
45  
46  
47  
48  
49  
50  
51  
52  
53  
54  
55  
56  
57  
58  
59  
60

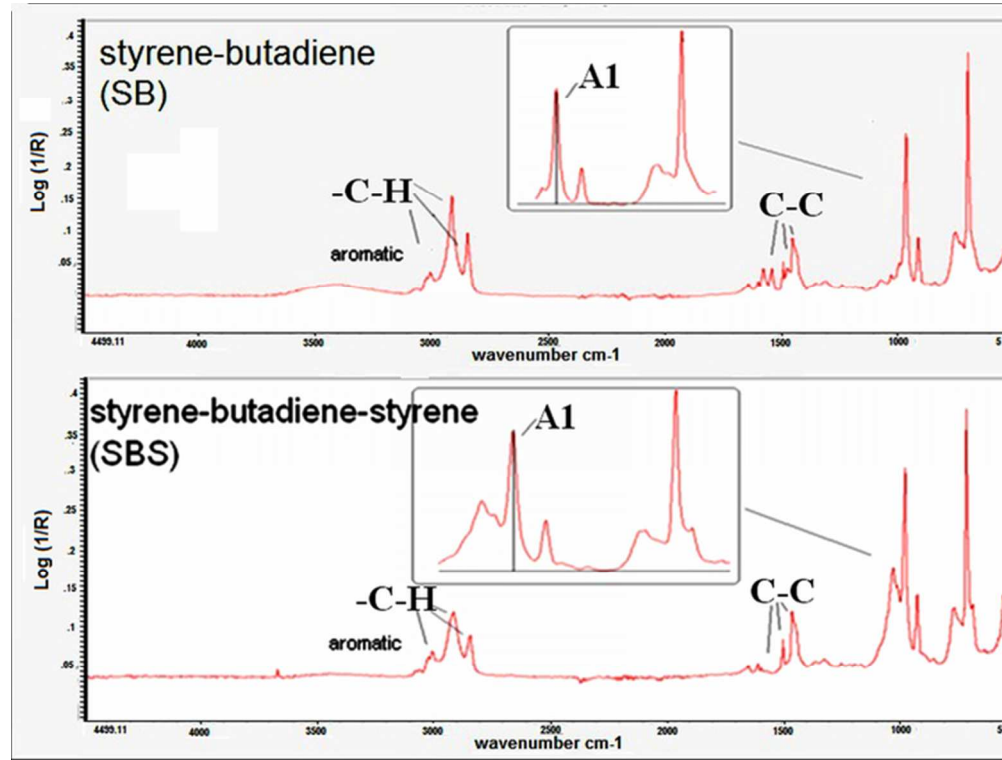


Map of Gdansk with sampling sites of modified and unmodified bitumens marked.  
27x22mm (600 x 600 DPI)

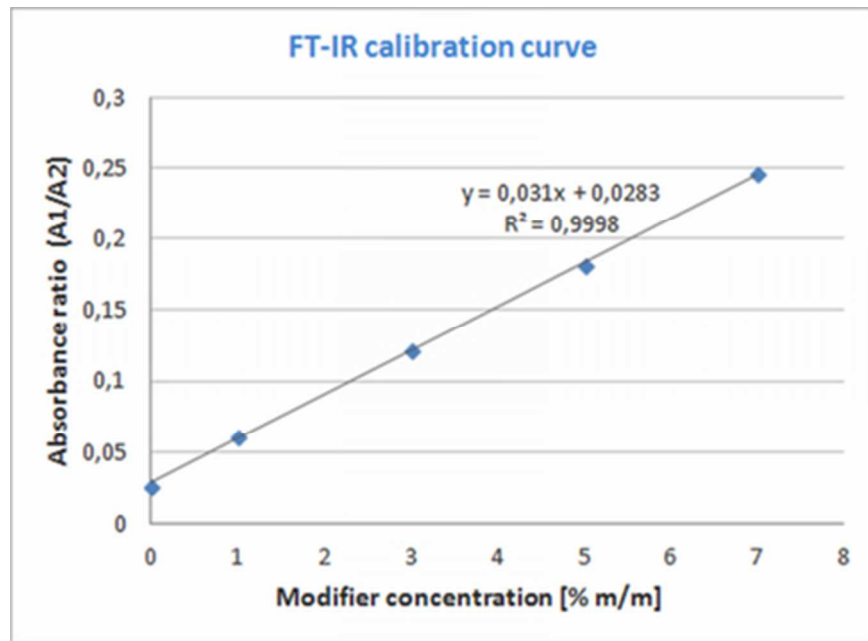




ATR IR spectra with a resolution of 4 cm<sup>-1</sup> in the range 4000–500 cm<sup>-1</sup> of: a) modified bitumen 25/55-60  
b) unmodified bitumen 35/50.  
27x26mm (600 x 600 DPI)



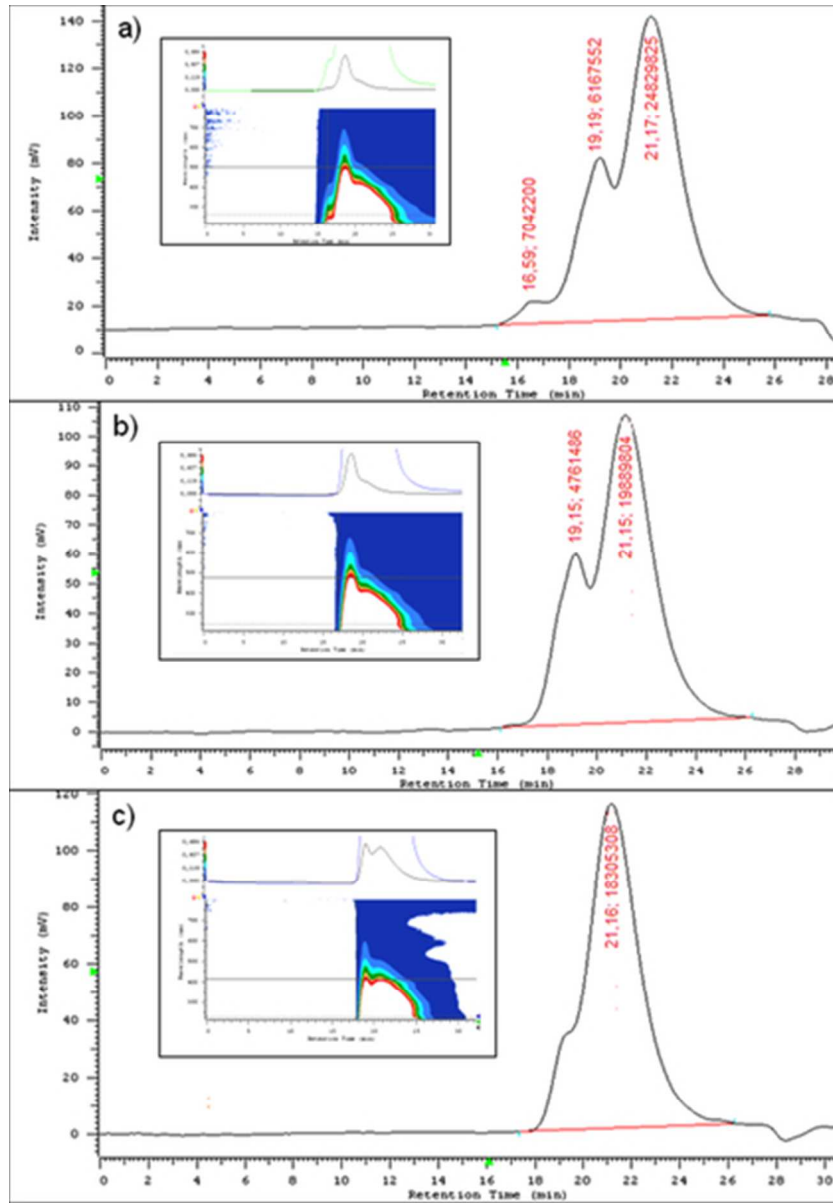
ATR IR spectra with a resolution of 4 cm<sup>-1</sup> in the range 4000–500 cm<sup>-1</sup> of SB and SBS modifiers.  
30x23mm (600 x 600 DPI)



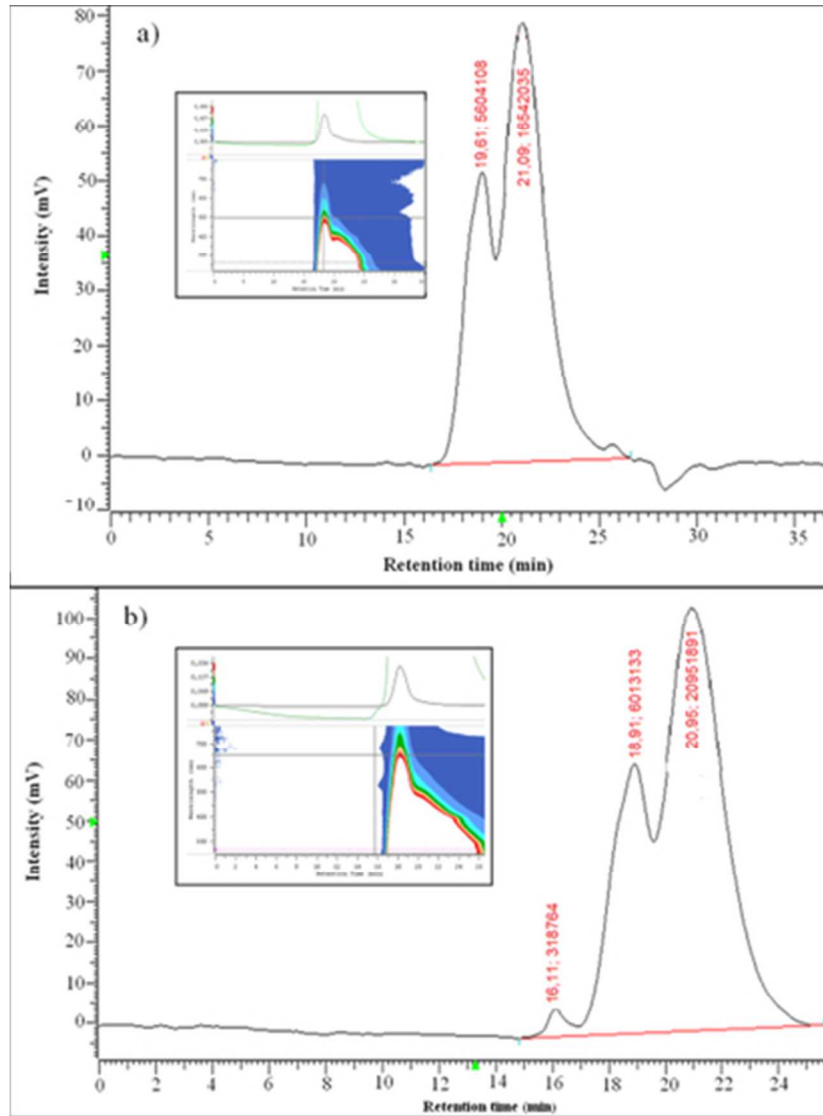
28  
29  
30  
31  
32  
33  
34  
35  
36  
37  
38  
39  
40  
41  
42  
43  
44  
45  
46  
47  
48  
49  
50  
51  
52  
53  
54  
55  
56  
57  
58  
59  
60

Calibration curve for FT-IR. Variable x stands for modifier concentration (in % m/m), variable y – for absorbance ratio.

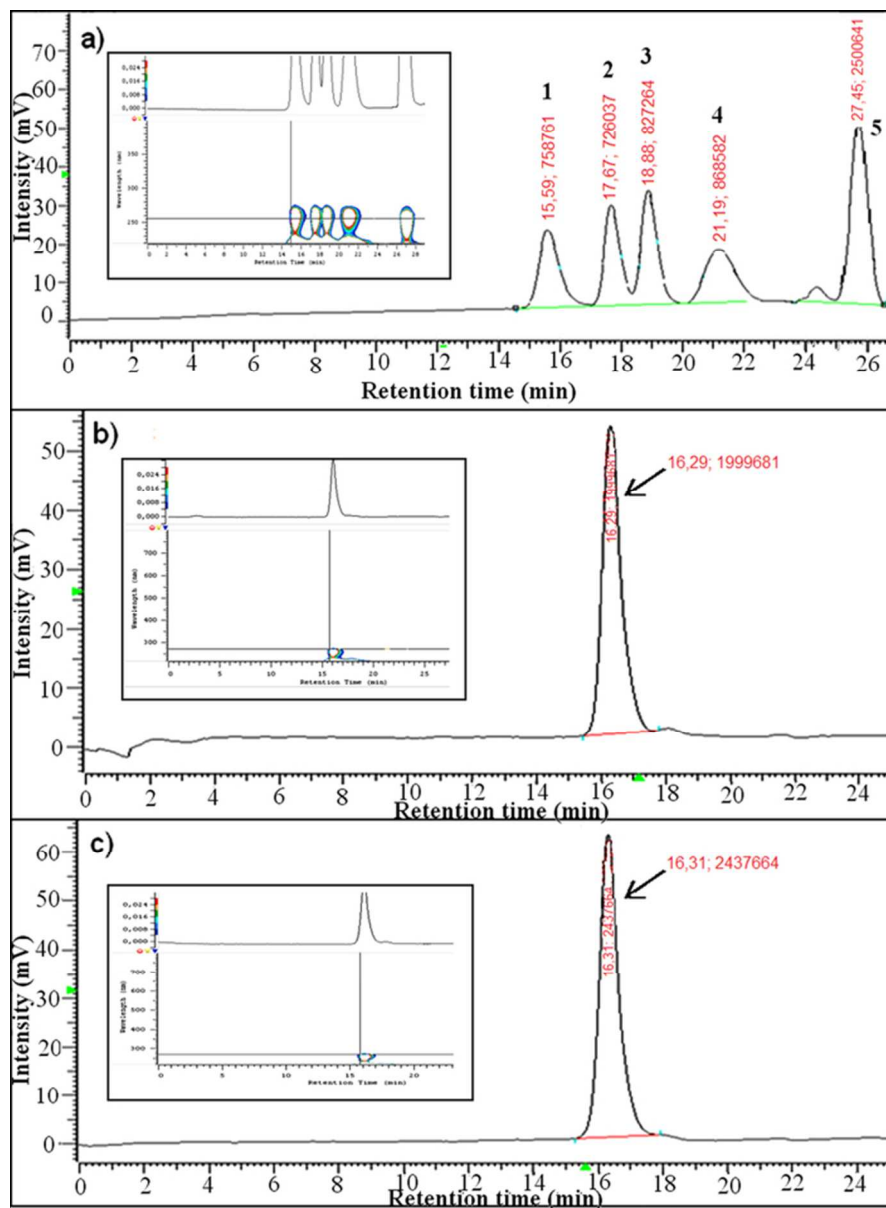
18x13mm (600 x 600 DPI)



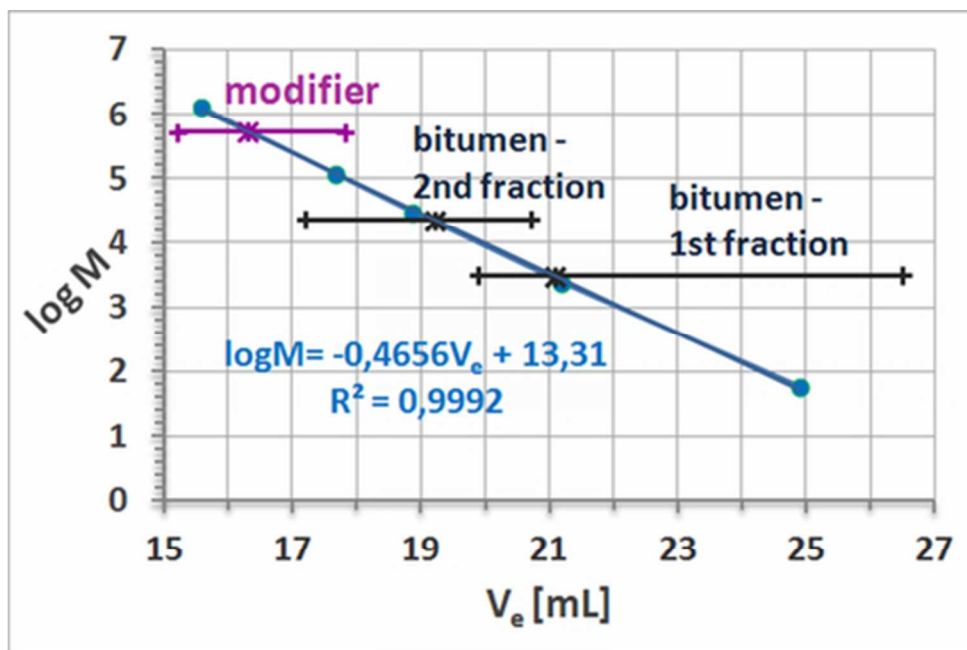
GPC/SEC chromatograms of bitumens. Columns: 2xPS1+2xPS MIX, eluent: tetrahydrofuran 1mL min<sup>-1</sup>, injection volume 20  $\mu$ L, temperature 20  $^{\circ}$ C, a - modified bitumen 25/55-60 (50 mg mL<sup>-1</sup>); b - unmodified bitumen 35/50 (50 mg mL<sup>-1</sup>); c - unmodified bitumen 160/220 (50 mg mL<sup>-1</sup>).  
19x25mm (600 x 600 DPI)



GPC/SEC chromatograms of bitumens. Columns 2xPS1+2xPS MIX, eluent: tetrahydrofuran 1mL min<sup>-1</sup>, injection volume 20  $\mu$ L, temperature 20  $^{\circ}$ C, a - unmodified bitumen from Kampinowska Street from year 2008 (50 mg mL<sup>-1</sup>); b - modified bitumen from Cienista Street from year 2008 (50 mg mL<sup>-1</sup>). 17x23mm (600 x 600 DPI)



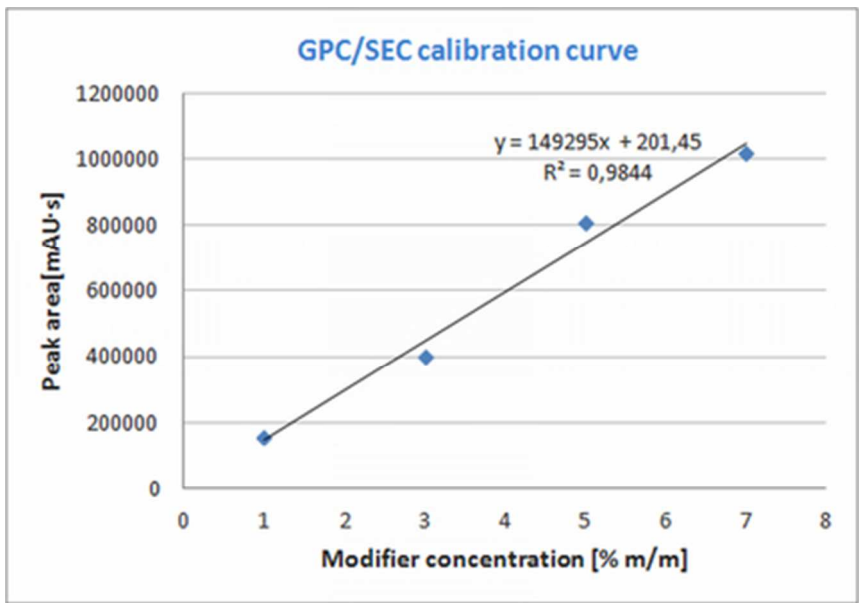
GPC/SEC chromatograms of polystyrenes and analyzed modifiers. Columns: 2xPS1+2xPS MIX, eluent: tetrahydrofuran 1mL min<sup>-1</sup>, injection volume 20  $\mu$ L, temperature 20 OC; a-mixture of standards (where 1-4 are polystyrenes of masses: 1-1,260,000, 2-120,000, 3-30,300, 4-2,450, 5-acetone, 6-benzene) (5mg mL<sup>-1</sup>); b-SBS (5 mg mL<sup>-1</sup>); c-SB (5.3 mg mL<sup>-1</sup>).  
29x40mm (600 x 600 DPI)



GPC/SEC calibration curve ( $\log M = f(V_e)$ ; blue) for polystyrenes of masses: 1,260,000, 120,000, 30,300, 2,450 and acetone. The relevant ranges of  $V_e$  values obtained for bitumen (black, 1st and 2nd fraction, where the 1st one refers to fraction of lower molecular mass, and 2nd - to higher molecular mass; explained in text), as well as for bitumen modifier (purple) are depicted in the graph.

20x13mm (600 x 600 DPI)

1  
2  
3  
4  
5  
6  
7  
8  
9  
10  
11  
12  
13  
14  
15  
16  
17  
18  
19  
20  
21  
22  
23  
24  
25  
26  
27  
28  
29  
30  
31  
32  
33  
34  
35  
36  
37  
38  
39  
40  
41  
42  
43  
44  
45  
46  
47  
48  
49  
50  
51  
52  
53  
54  
55  
56  
57  
58  
59  
60



Calibration curve for GPC/SEC. Variable x stands for modifier concentration [% m/m], variable y – for peak area [mAU·s].  
18x12mm (600 x 600 DPI)

Review Only



1  
2  
3  
4 **Figure captions**  
5  
6  
7  
8  
9

10 **Figure 1.** Map of Gdansk with sampling sites of modified and unmodified bitumens marked.  
11

12  
13  
14  
15  
16 **Figure 2.** ATR IR spectra with a resolution of  $4\text{ cm}^{-1}$  in the range  $4000\text{--}500\text{ cm}^{-1}$  of: a) modified  
17 bitumen 25/55-60 b) unmodified bitumen 35/50.  
18  
19

20  
21  
22  
23  
24  
25 **Figure 3.** ATR IR spectra with a resolution of  $4\text{ cm}^{-1}$  in the range  $4000\text{--}500\text{ cm}^{-1}$  of SB and SBS  
26 modifiers.  
27  
28

29  
30  
31  
32 **Figure 4.** Calibration curve for FT-IR. Variable x stands for modifier concentration (in % m/m),  
33 variable y – for absorbance ratio.  
34  
35  
36

37  
38  
39  
40  
41 **Figure 5.** GPC/SEC chromatograms of bitumens. Columns: 2xPS1+2xPS MIX, eluent:  
42 tetrahydrofuran  $1\text{ mL min}^{-1}$ , injection volume  $20\text{ }\mu\text{L}$ , temperature  $20\text{ }^{\circ}\text{C}$ , a – modified bitumen  
43 25/55-60 ( $50\text{ mg mL}^{-1}$ ); b – unmodified bitumen 35/50 ( $50\text{ mg mL}^{-1}$ ); c – unmodified bitumen  
44 160/220 ( $50\text{ mg mL}^{-1}$ ).  
45  
46  
47  
48  
49

50  
51  
52  
53  
54  
55 **Figure 6.** GPC/SEC chromatograms of bitumens. Columns 2xPS1+2xPS MIX, eluent:  
56 tetrahydrofuran  $1\text{ mL min}^{-1}$ , injection volume  $20\text{ }\mu\text{L}$ , temperature  $20\text{ }^{\circ}\text{C}$ , a – unmodified bitumen  
57  
58  
59  
60

1  
2  
3 from Kampinoska Street from year 2008 ( $50 \text{ mg mL}^{-1}$ ); b – modified bitumen from Cienista  
4  
5 Street from year 2008 ( $50 \text{ mg mL}^{-1}$ ).  
6  
7  
8  
9

10  
11 **Figure 7.** GPC/SEC chromatograms of polystyrenes and analyzed modifiers. Columns:  
12  
13 2xPS1+2xPS MIX, eluent: tetrahydrofuran  $1 \text{ mL min}^{-1}$ , injection volume  $20 \mu\text{L}$ , temperature  $20$   
14  
15  $^{\circ}\text{C}$ ; a–mixture of standards (where 1–4 are polystyrenes of masses: 1–1,260,000, 2–120,000, 3–  
16  
17 30,300, 4–2,450, 5–acetone, 6–benzene) ( $5 \text{ mg mL}^{-1}$ ); b–SBS ( $5 \text{ mg mL}^{-1}$ ); c–SB ( $5.3 \text{ mg mL}^{-1}$ ).  
18  
19  
20  
21  
22  
23

24  
25 **Figure 8.** GPC/SEC calibration curve ( $\log M = f(V_e)$ ; blue) for polystyrenes  
26  
27 of masses: 1,260,000, 120,000, 30,300, 2,450 and acetone. The relevant ranges of  $V_e$  values  
28  
29 obtained for bitumen (black, 1<sup>st</sup> and 2<sup>nd</sup> fraction, where the 1<sup>st</sup> one refers to fraction of lower  
30  
31 molecular mass, and 2<sup>nd</sup> – to higher molecular mass; explained in text), as well as for bitumen  
32  
33 modifier (purple) are depicted in the graph.  
34  
35  
36  
37  
38  
39  
40

41 **Figure 9.** Calibration curve for GPC/SEC. Variable x stands for modifier concentration [%  
42  
43 m/m], variable y – for peak area [mAU·s].  
44  
45  
46  
47  
48  
49  
50  
51  
52  
53  
54  
55  
56  
57  
58  
59  
60

## List of tables

**Table 1.** Actual data used for calibration curve preparation in case of FT-IR.

modifier concentration [% m/m]	0,0	1,0	3,0	5,0	7,0
absorbance ratio (A1/A2)*	0.027	0.061	0.122	0.182	0.246

\* where A1 is characteristic absorbance for polymer modifier ( $965\text{cm}^{-1}$ ), and A2 is characteristic absorbance for bitumen ( $1375\text{cm}^{-1}$ )

**Table 2.** Concentration of modifiers in bitumens and statistical parameters for FT-IR technique.

<b>Parameters</b>	<b>modified bitumen 25/55-60</b>	<b>modified bitumen 45/80-55</b>	<b>1 (2008)</b>	<b>2 (2007)</b>	<b>3 (2006)</b>
<b>Modifier concentration [%m/m]</b>	4.52	3.51	2.24	3.32	3.36
<b>Standard deviation</b>	0.25	0.25	0.13	0.80	0.57
<b>Relative standard deviation</b>	0.05	0.07	0.06	0.24	0.17

**Table 3.** Actual data used for calibration curve preparation in case of GPC/SEC.

<b>modifier concentration [ % m/m ]</b>	<b>1,0</b>	<b>3,0</b>	<b>5,0</b>	<b>7,0</b>
<b>peak area [mAU·s]*</b>	158199	402767	811214	1017353

\* the peak area are averages for triplicate analysis

For Peer Review Only

**Table 4.** Concentration of modifiers in bitumens and statistical parameters for GPC/SEC technique.

<b>Parameters</b>	<b>modified bitumen 25/55-60</b>	<b>modified bitumen 45/80-55</b>	<b>1 (2008)</b>	<b>2 (2007)</b>	<b>3 (2006)</b>
<b>Modifier concentration [%m/m]</b>	4.41	3.16	2.11	3.28	3.57
<b>Standard deviation</b>	0.24	0.13	0.06	0.24	0.06
<b>Relative standard deviation</b>	0.05	0.04	0.03	0.07	0.01

**Table 5.** Group composition of unmodified and modified bitumens.

<b>Bitumen</b>	<b>Saturated compounds [%]</b>	<b>Aromatic compounds [%]</b>	<b>Resins [%]</b>	<b>Asphaltenes [%]</b>
<b>Unmodified bitumen 35/50</b>	21.27	49.99	21.58	7.16
<b>Modified bitumen 25/55-60</b>	16.22	36.15	38.97	8.67