

Review

# Nanosorbents as Materials for Extraction Processes of Environmental Contaminants and Others

María José Santoyo Treviño <sup>1</sup>, Sergio Zarazúa <sup>1</sup> and Justyna Płotka-Wasyłka <sup>2,\*</sup>

<sup>1</sup> Laboratory of Neurotoxicology, Faculty of Chemistry, Autonomous University of San Luis Potosí, Av. Manuel Nava 6, Zona Universitaria, San Luis Potosí 78210, Mexico; mjst1191@gmail.com (M.J.S.T.); sergio.zarazua@uaslp.mx (S.Z.)

<sup>2</sup> Department of Analytical Chemistry, Faculty of Chemistry and BioTechMed Center, Gdańsk University of Technology, 11/12 G. Narutowicza St., 80-233 Gdańsk, Poland

\* Correspondence: juswasyl@pg.edu.pl or plotkajustyna@gmail.com

**Abstract:** The aim of this work focuses on the application of nanomaterials (NMs) in different sorptive extraction techniques for the analysis of organic contaminants from environmental samples of distinct matrix compositions. Without any doubt, the integration of specific NMs such as carbonaceous nanomaterials, magnetic nanoparticles (MNPs), metal–organic frameworks (MOFs), silica nanoparticles, and ion-imprinted NPs with solid-phase extraction techniques counting *d*-SPE, solid-phase microextraction (SPME), and stir bar sorptive extraction (SBSE) impact on the improvements in analytical performance. The application of NMs as sorbents in the extraction of organic pollutants in environmental samples allows for providing better sensitivity, repeatability, reproducibility, and reusability.

**Keywords:** nanomaterials; nanoparticles; extraction techniques; sorbent; sample preparation

**Citation:** Santoyo Treviño, M.J.; Zarazúa, S.; Płotka-Wasyłka, J. Nanosorbents as Materials for Extraction Processes of Environmental Contaminants and Others. *Molecules* **2022**, *27*, 1067. <https://doi.org/10.3390/molecules27031067>

Academic Editor: Simone Morais

Received: 21 December 2021

Accepted: 2 February 2022

Published: 5 February 2022

**Publisher's Note:** MDPI stays neutral with regard to jurisdictional claims in published maps and institutional affiliations.



**Copyright:** © 2022 by the authors. Licensee MDPI, Basel, Switzerland. This article is an open access article distributed under the terms and conditions of the Creative Commons Attribution (CC BY) license (<https://creativecommons.org/licenses/by/4.0/>).

## 1. Introduction

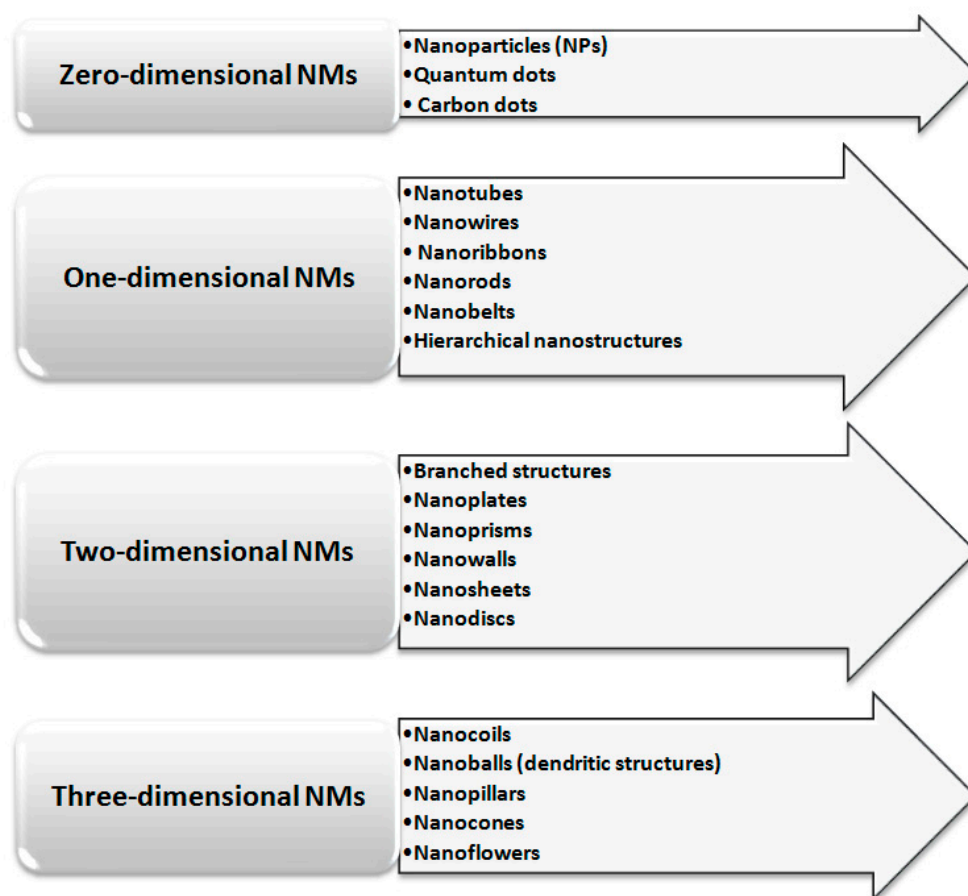
Much research on the application of nanomaterials in different scientific and industrial fields is being performed in areas such as oil processing, sensors, water treatment, building materials, catalysis, food, and construction [1]. NMs have also become an object of interest in the field of analytical chemistry activities [2]. Over the last two decades, NMs have been widely applied as sorbents for the extraction of environmental contaminants [2]. This is due to their unique properties such as large surface area and fast adsorption capability, and they also present high selectivity and efficiency for environmental pollutants. The most popular NMs used as sorbents for these purposes are magnetic nanoparticles (MNPs), nano-based metal–organic frameworks (N-MOFs), silica nanoparticles (SiNPs), carbon nanomaterials (CNMs), and nano-imprinted polymers (NIPs). These NMs are utilized for the isolation and pre-concentration of environmental pollutants in such techniques as solid-phase extraction (SPE), solid-phase microextraction (SPME), magnetic solid-phase extraction (MSPE), and dispersive solid-phase extraction (DSPE). It is worth mentioning that the application of these nanomaterial sorbents impacts the extraction efficiency of these techniques.

This review summarizes the basic features of analytical options that can be used for the extraction and preconcentration of pollutants in environmental samples based on the integration amongst different kinds of NMs and several types of microextraction techniques. In addition, environmental samples characterized by different matrix compositions are considered. The issue of the article focusing on the application of nanosorbents as materials for extraction processes was highly treated in the literature [3–6]. However, this review contains essential and the most significant information for researchers who deal with the complex issues connected with environmental samples and can be an easy

start for future researchers in this area. In the present article, future authors will find not only information on the types of NMs applied in sample preparation processes, but also general knowledge on the specific solid-phase extraction techniques, which can be very useful for basic research. Reaxys database from Elsevier was used to find data and information necessary to perform this research, saving time and ensuring completeness of results.

## 2. Classification of Nanomaterials as Sorbents

The classification of NMs depends on the considered parameter, and therefore, they can be classified based on their structural geometry and chemical composition but also based on the dimensionality of materials. Considering the last parameter, NMs can be divided into (i) zero-dimensional (0-D), (ii) one-dimensional (1-D), (iii) two-dimensional (2-D), and (iv) three-dimensional (3-D). A schematic representation of this classification, together with examples, is presented in Figure 1. A given nanomaterial may belong to different groups mentioned above. Information on NMs classified in different classes is presented in Table 1.



**Figure 1.** Classification of nanomaterials based on the dimensionality of materials.

**Table 1.** Information on NMs classified in different classes.

Type of NMs	Examples	Notes	Ref.
Carbonaceous nano-materials	Graphene quantum dots	The nanostructured carbonaceous materials have shown exceptional behavior in extracting and preconcentrating trace-level	[7]



		organic contaminants prior to analysis. Provide high chemical stability, more surface area, small pore size, hollow structure, and easy modification compared to conventional adsorbent materials.	
	Carbon nanotubes (CNTs)	The adsorption efficiency of CNTs also depends on their purity, surface area, functional groups present on the surface, adsorption sites, and experimental parameters.	[7]
	Graphene nanoribbons	Display a finite bandgap when their width is less than 10 nm, and their electronic behavior changes from semiconductors to semimetals as their width increases. High surface area, low cost, delocalized pi-electrons, easy modification.	[8]
	Graphene	More effective adsorbent than CNTs and fullerenes.	[9]
	Graphene oxide	The active sites of GO make easier the synthesis of composite material.	
Magnetic nanoparticles (MNPs)	Core-shell Fe <sub>3</sub> O <sub>4</sub> polydopamine NPs;	Nanosized particles having supermagnetic properties, high surface reactivity, large surface area, high adsorption ability, and easily adjustable temperature.	[10]
	Iron oxide NPs	The adsorption capacity of MNPs can be enhanced through physical or chemical modification with complexing agents/organic compounds. Highly selective adsorbents for the preconcentration and extraction of template ions in a complex matrix.	[11,12]
Ion-imprinted polymer nanoparticles (NIPs)	Fe <sub>3</sub> O <sub>4</sub> @SiO <sub>2</sub> @IIP NPs; Ni-Fe <sub>3</sub> O <sub>4</sub> @IIP; Pb-IIP	The selectivity of NIPs as adsorbents is based on the ligand specificity toward the metal ion, coordination geometry, coordination	]



Silica nanoparticles (SiNPs)	Hybrid amine-functionalized	number of the ions, charge, and size. Have a high surface area, and different diameter and size of particles, and is easily modified due to the presence of silanes.	[13]
	titania/silica nanoparticles	The limitation of silica nanoparticles includes narrow pH band (pH 2–8), and chemical and thermal instability.	
NPs based on metal–organic frameworks (MOFs)	TMU-8; TMU-9; MOF-199 consist of iron oxide nanoparticles-immobilized 4-(thiazolylazo) resorcinol (Fe <sub>3</sub> O <sub>4</sub> @TAR)	The pore shape and size make the MOFs highly selective and ideal adsorbents. Are easily dispersed and extracted from a sample mixture with the use of a magnet.	[14]

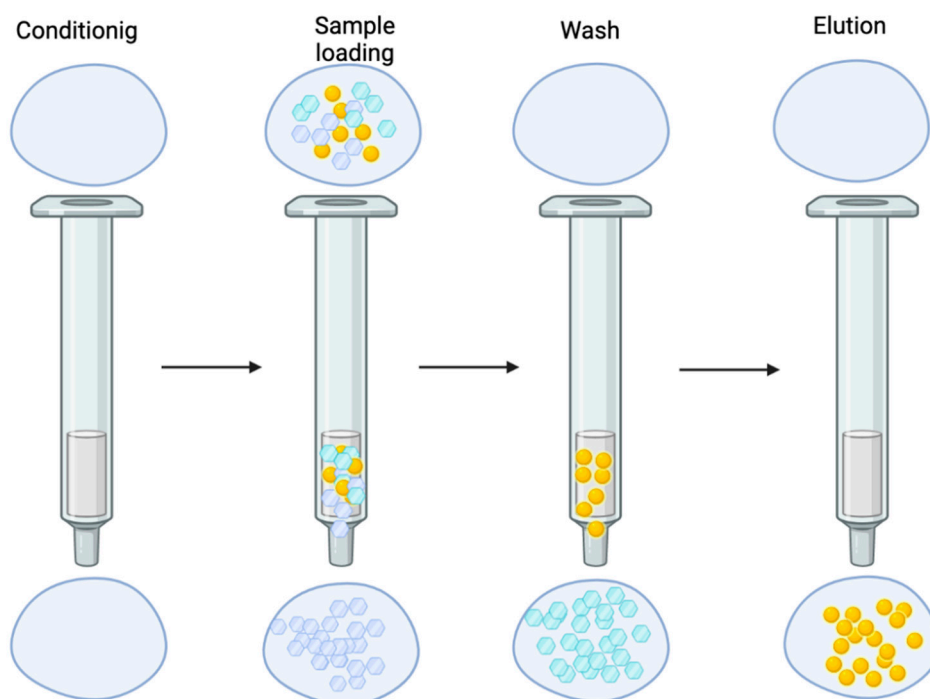
### 3. Nanomaterials as Sorbents for Extraction of Organic Environmental Contaminants

Microextraction techniques can be a valuable tool to detect environmental contaminants in trace levels in a wide variety of matrixes such as soil, wastewater, and air. These techniques can be applied to the determination of different analytes in environmental samples such as pesticides, volatile organic compounds (VOCs), phthalates, polycyclic aromatic hydrocarbons (PAHs), and flame retardants.

Solid-phase extraction is the most frequently used technique in pre-concentration, extraction, and clean-up procedures for the identification and quantification of trace pollutants and xenobiotics [15]. This technique has a wide variety of clinical and environmental applications. However, these technologies have their limitations because they have to be used only with organic solvents due to their simplicity [16,17].

The SPE procedure consists of loading a sample solution into a solid phase, which can be a cartridge with a sorbent capable of retaining target analytes and washing away undesired sample components. The complete procedure is shown in Figure 2.





**Figure 2.** SPE consists of four critical steps, in which a solid sorbent is pre-conditioned with an appropriate solvent to remove possible impurities, wetting the packed material, and solvation of the functional groups. 1—The conditioning solvent must be selected depending on the nature of the solid sorbent; 2—The second step consists of loading the sample through the solid sorbent. 3—The third step is the optional washing of the sorbent to eliminate the residual compounds retained by the sorbent; 4—The final step involves the elution of the analytes of interest with an appropriate solvent.

According to Pole [17], SPE sorbents can be divided into 3 main groups, which are shown in Table 2.

**Table 2.** Information on the SPE sorbents.

Group	Examples	Description/Uses
Inorganic oxides	Silica-bonded phases Octyl-bonded silica Butyl-dimethyl-bonded silica Graphene oxide (GO) Amino-based silica	Have adsorbent properties with a high number of contact surfaces areas [18].
	Alumina-based packing Alumina-A Alumina-B Alumina-C	The most common applications of inorganic oxides are the isolation of polar pesticides from fats and oils [15,17,18].
	Synthetic magnesium silicate (Florisil®)	LC-Florisil Envi-Florisil

Low-specificity sorbents	Silica-bonded Sorbents	Siloxane-bonded sorbents 3-cyanopropyl, 3-aminopropyl	Commonly used for isolation of pollutants from an aqueous solution.
Low-specificity sorbents	Graphitized carbon blacks and porous graphitic carbon	Porous polymer sorbents Copolymers of styrene and divinylbenzene.	
Compound-specific and class-specific sorbents	Molecularly imprinted polymers (MIPs)	Immunosorbents [19]	Based on molecular recognition by antibodies [2]. Used as synthetic analogs of immunosorbents.

In recent years, solid-phase microextraction (SPME) has attracted special analytical attention due to its high selectivity on trace target analytes [20]. SPME is an efficient technique integrating many operations from the extraction procedure, including the isolation of the analyte from sample matrices, sample collection, and extraction in a simple step [21]. This technique is based on the partition equilibrium principle of the target analytes among the matrix and the solid extraction phase. However, SPME has a simple and solventless sample preparation procedure [22]. The sample is exposed to a fused silica fiber coated with a layer of adsorbent as the extracting phase that is directly exposed to the sample matrix for a specific amount of time until it reaches the equilibrium state [23]. SPME can be performed in three types [24], which are described in Table 3.

In comparison to SPE, SPME is characterized by simplicity, effective cleanup, less solvent consumption, higher extraction efficiency, and higher limit of detection. In addition, it is easily compatible with different instrumental techniques, especially with GC-MS. All of these advantages make SPME a perfect extraction technique used for the extraction of trace organic and inorganic analytes from different complexed environmental matrices [2]. Without any doubt, the choice of appropriate sorbents is the key role in the extraction of specific analytes. There are many commercially available sorbents; however, nanomaterials are often involved in SPME due to its special characteristics, mainly because of the large surface area and unique mechanical, thermal, magnetic, and electronic properties. It is well known that the larger surface area impacts on the increase in the interaction or adsorption capacity of the target compounds with the NPs, which results in a high capacity of extraction and efficiency for the specific analytes [25].

**Table 3.** Main modes in which SPME can be performed.

SPME Mode	Description	Types of Compounds that Can Be Analyzed
Direct immersion (DI-SPME)	Fiber coated with a sorbent directly exposed to the matrix. Analytes must go directly from the matrix to the sorbent.	Isolation of volatile compounds from biological matrixes. Complex biological matrixes: blood, urine, hair.
Head Space SPME (HS-SPME)	Fused silica-fiber coated with adsorbent exposed directly in headspace above sample.	Preferred for semi-volatile compounds. Soil, food, and biological samples.
Protective membrane SPME	DI-SPME used together with a protective membrane, which is used to prevent the diffusion of high-weight molecules in the extraction phase.	



Depending on the analytes' nature, a high number of nanosorbents can be selected for SPME, which are summarized and described in Table 4.

In one example, Shirani et al. developed an overhead rotating flat surface sorbent-based solid-phase microextraction for a rapid, efficient, and simultaneous separation and determination of sulfonamides in fish, cow milk, chicken meat, and egg. Three-dimensional graphene oxide/lanthanum nanoparticles @ Ni foam was introduced as a novel selective sorbent. The method is characterized by the following advantages: rapid extraction process, facile separation of the sorbent from the media, low limit of detection, and appropriate precision and accuracy [26]. The analysis of the selected food samples was performed with satisfactory relative recoveries (90.0–99.8%) and a relative standard deviation (RSD, %) less than 3.8, which is another benefit of the proposed procedure. The overall validation parameters confirm the superior potential of the methodology for application in samples characterized by complex matrices composition.

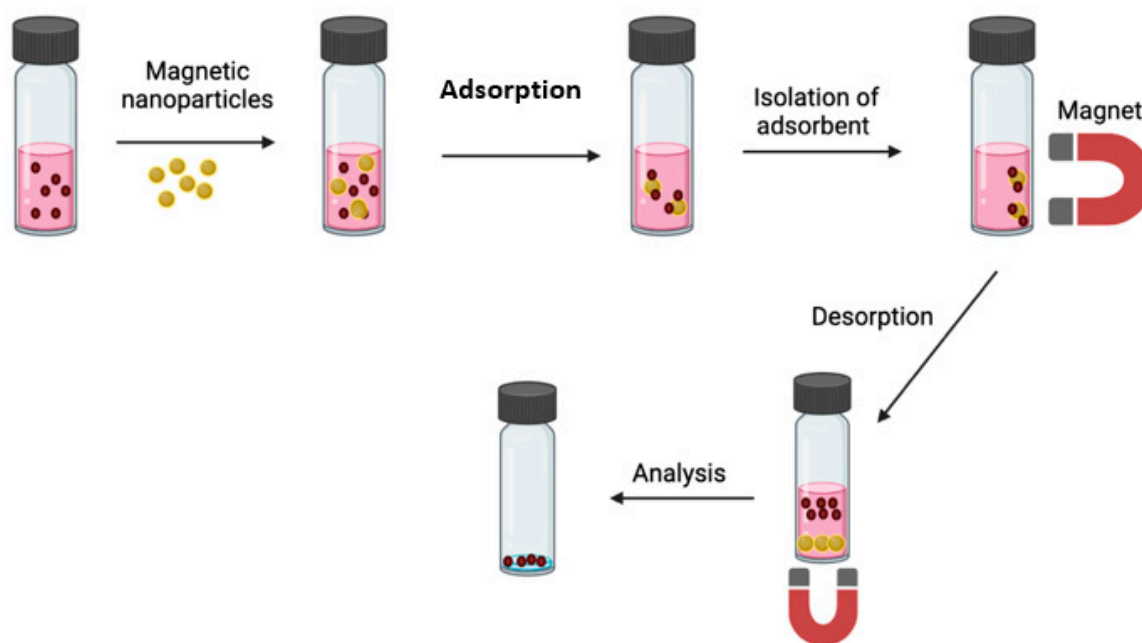
In another research study [27], SPME with polysulfone and molecularly imprinted polymers (MIPs) as a coating on Ni foam were applied to adsorb and enrich floxacin drugs from environmental water samples. The preparation procedure is simple and the coating is stable. In addition, the controlled thickness of materials is reproducible. The polysulfone did not reduce the selectivity of MIP but had the assistant function in addition to increasing the adsorption amount. Coupled with HPLC-UV-VIS analysis, the methodology is characterized by satisfied validation parameters (LOD: 3.0–6.2  $\mu\text{g L}^{-1}$ ), as well as recoveries (90.0–104.8%), with a RSD (%) ranging from 1.0% to 9.9%.

**Table 4.** Types of nanosorbents used in SPME.

Analyte	NPs and Its Modification	Matrices	Extraction Technique	Separation Technique	LOD	Ref.
Cu, Co, Hg	Fe <sub>3</sub> O <sub>4</sub> @SiO <sub>2</sub> @g-MAPS	Fish, shrimp, chicken	MR/IT-SPME	HPLC-DAD	0.69–4.9 $\mu\text{g L}^{-1}$	[28]
Sulfonamides	GO-La NPs @ Ni foam	meat, cow meat, cow milk	RFS-SPME	HPLC-DAD	0.08–0.14 $\mu\text{g L}^{-1}$	[26]
Pd, Cd	MMWCNTs-PT	Tea, milk, rice	MSPME	FAAS	0.54, 0.03 $\mu\text{g L}^{-1}$	[29]
Ofloxacin drugs	OFL MIP	Water	MIP-SPME	HPLC-UV-VIS	3.0–6.2 $\mu\text{g L}^{-1}$	[27]
Mo	AgPSruci	Water	DSPME	ETAAS	0.02 $\mu\text{g L}^{-1}$	[30]
Cd	Co Fe <sub>3</sub> O <sub>4</sub>	Oyster	MSPME	FAAS	0.24 $\mu\text{g L}^{-1}$	[31]
Cu, Pb, Cr	MDETAGOs	Juice, rice	MDSPME	DPV	0.15 ng mL <sup>-1</sup>	[32]

AgPSruci, polystyrene-polyricinoleic acid copolymer containing silver nanoparticles; DPV, differential pulse voltammetry; DSPME, dispersive solid-phase microextraction; ETAAS, electrothermal atomic absorption spectrometry; Fe<sub>3</sub>O<sub>4</sub>@SiO<sub>2</sub>@g-MAPS, Fe<sub>3</sub>O<sub>4</sub>-nanoparticles modified with tetraethylorthosilicate and 3-(trimethoxysilyl) propylmethacrylate; GO-La NPs@Ni foam, 3D graphene oxide/lanthanum nanoparticles @ Ni foam; MDETAGOs, magnetic diethylenetriamine-functionalized graphene oxide nanocomposites; MDSPME, magnetic dispersive solid-phase microextraction; MMWCNTs-PT, magnetic multi-walled carbon nanotubes modified with polythiophene; MR/IT-SPME, magnetism-reinforced in-tube solid-phase microextraction; MSPME, magnetic solid-phase microextraction; OFL MIP, ofloxacin molecularly imprinted polymers; RFS-SPME, rotating flat surface solid-phase microextraction

In some cases, it is not possible to obtain satisfactory recovery of some trace analytes. Magnetic nanoparticles (MNPs) might be a better alternative to conventional SPE or SPME sorbents to reduce these limitations. Due to their small size, these MNPs have a good adsorption capacity and high selectivity for some analytes. The MSPE procedure is described in Figure 3



**Figure 3.** A sorbent is placed in the solution containing the target analytes. The analytes have direct contact with the sorbent NPs, which causes selective adsorption on the solid surface of the sorbent. A magnetic field in the solution is used to separate the main analyte from the solution.

MNPs are composed of a magnetic core made of iron, cobalt, nickel, and their oxides such as  $\text{Fe}_3\text{O}_4$  [33]. The magnetic core of MNPs is not fully selective. To overcome these difficulties, the MNPs are covered with a suitable coat of inorganic substances such as manganese oxide (IV), alumina, silica gel, or graphene [34]. It can also be covered by organic compounds such as MIPs, surfactants, and divinylbenzene. Table 5 shows the main applications for MNPs.

In one example [31], magnetic solid-phase microextraction (MSPME) with  $\text{CoFe}_2\text{O}_4$  NPs for the determination of cadmium in oyster and water samples using flame atomic absorption spectrometry (FAAS) was performed. The synthesis of cobalt nanoferrite was performed by the co-precipitation method with the addition of sucrose. Such a procedure allowed the formation of  $\text{CoFe}_2\text{O}_4$  with an average size of 5.0 nm and with magnetic properties. The optimized analytical methodology is simple and robust. It allows the determination of the Cd with a LOD of  $0.24 \text{ mg L}^{-1}$ . The analysis of oyster samples was performed with satisfactory relative recoveries (93.6–102%) with RSD (%) less than 5.6.

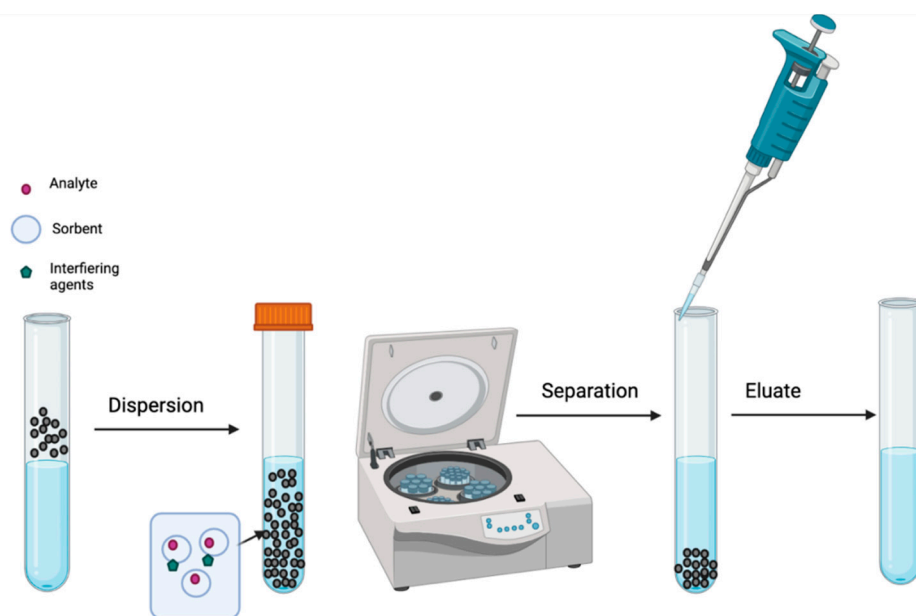
**Table 5.** Main applications of MNPs.

	Application	Examples
Biological samples	<ul style="list-style-type: none"> <li>Isolation of ribonucleic acids (RNA) and desoxyribonucleic acids (DNA) from biological fluids, viruses, and bacteria.</li> <li>Protein purification</li> </ul>	<ul style="list-style-type: none"> <li>Estrogens in plasma samples from pregnant women [35].</li> <li>Steroid hormones in human urine samples [36].</li> </ul>



Food samples	<ul style="list-style-type: none"> <li>• Isolation of organic and inorganic compounds from complex biological fluids such as blood plasma, blood serum, urine saliva.</li> <li>• The binding of biomolecules such as antibodies or aptamers on the surface of MNPs causes the isolation process of different contaminants in food.</li> <li>• Isolation of ions and heavy metals in water, soil, and air samples</li> <li>• Identification and quantification of persistent organic pollutants (POPs), such as organochlorine and organophosphate pesticides, PBDEs, PCBs, pharmaceutical products, PAHs, and phthalates.</li> </ul>	<ul style="list-style-type: none"> <li>• Fenitrothion in human plasma and urine samples [37].</li> <li>• Acetanilide herbicides in green tea samples [38].</li> <li>• Pyrethroids pesticides in rice, wheat, and corn samples.</li> <li>• Hg (II) in fish samples [39].</li> <li>• AHs in seawater samples.</li> <li>• Carbamate pesticides in river and rice field water samples. [40]</li> <li>• Heavy metals in the water of river and lakes: Cu (II), Ni(II), Cd(II), Pb (II), Mn (II) [41].</li> </ul>
Environmental samples		

Another technique in this area is dispersive solid-phase extraction (microextraction) (DSPE/DSPME), which consists of the dispersion of a solid sorbent in a sample formed by a solvent and the target analytes that will be extracted. One of the advantages of this procedure is that the sorbent can interact directly with the target compounds and may be easily separated from the sample by centrifugation or filtration [42]. Moreover, DSPE is rapid and requires low solvent consumption [43]. The DSPE procedure is described in Figure 4, while Table 6 presents the main analytical methodologies, sorbents, and applications used in DSPE.



**Figure 4.** DSPE procedure is based on the dispersion of a solid adsorbent in a sample composed by a solvent and the target analytes. The sorbent can interact with the target analytes and could be easily separated using only centrifugation or filtration.

A very good example of such a type of extraction was presented by Tuzen et al [30]. In this research, the polystyrene-polyricinoleic acid copolymer containing silver NPs (Ag-PSruci) was created and applied in the separation of molybdenum ions from different aqueous and food samples during the DSPME approach. The high adsorption capacity of the AgPSruci adsorbent was found as  $170 \text{ mg g}^{-1}$  for Mo(VI) ions. An additional advantage is that the AgPSruci adsorbent can be used at least 60 times for the adsorption and desorption steps without any decrease in its sorption properties. In order to shorten the extraction time, the methodology was supported by the vortex-assisted extraction and centrifugation process. The present DSPME procedure was characterized by such benefits as fast, simple, low cost, eco-friendly, high enhancement factor, sensitive, and selective. Analytical data of the method were calculated and the LOD, LOQ, and RSD were  $0.022 \mu\text{g L}^{-1}$ ,  $0.066 \mu\text{g L}^{-1}$ , and 2.9%, respectively.

A very good analytical performance was obtained by the application of magnetic NPs in DSPME. A very good example of such an application was presented by Mohammadi et al. [44], who used a magnetic dispersive solid-phase microextraction technique (MDSPME) based on the chitosan–iron oxide magnetic nanocomposite (CS@Fe<sub>3</sub>O<sub>4</sub>) as a sensitive and inexpensive technique for the preconcentration and simultaneous determination of selected pesticides in fruit and vegetable samples before determining with GC–FID. The limit of detection for the determination of selected analytes was in the range of  $0.3\text{--}1.0 \text{ ng mL}^{-1}$ . The proposed methodology presented a high recovery percentage in the range of 95.8–106.0 and low RSDs ( $\leq 5.0$ ) for the determination of selected pesticides in the cucumber and orange samples.

**Table 6.** Information on the DSPE procedures used for analytical applications.

DSPE Technique	Brief Description	Sorbents Used	Applications
Quick, Easy, Cheap, Effective, Rugged, and Safe (QuEChERS) method.	<ul style="list-style-type: none"> <li>QuEChERS is based on the dispersion of salts to isolate a wide variety of analytes.</li> </ul>	<ul style="list-style-type: none"> <li>Primary Secondary Amine (PSA)</li> <li>Octadecyl Silica (C<sub>18</sub>)</li> <li>Graphitized Carbon Black (GCB).</li> <li>Micro materials such as PSA, C<sub>18</sub>, Graphitized Carbon Black (GCB), MIPs.</li> <li>Nanostructured sorbents such as:               <ol style="list-style-type: none"> <li>Nanoparticles (NPs) such as Au and metallic oxides (SiO<sub>2</sub>, Al<sub>2</sub>O<sub>3</sub>, TiO<sub>2</sub>, ZrO<sub>2</sub>) [47]</li> <li>Carbonaceous materials.</li> <li>Layered double hydroxides.</li> <li>Metal–organic Frameworks (MOFs)</li> <li>Hollow porous MIPs [48,49].</li> </ol> </li> </ul>	<ul style="list-style-type: none"> <li>Environmental analysis (Isolation of OCs, Ops, and carbamates pesticides from seeds and soils) [45]</li> <li>Pharmaceutical and clinical analysis (identification of xenobiotics in human blood and tissue)</li> <li>Isolation of food contaminants.</li> <li>Mycotoxins in breakfast cereals, fruits, and vegetables [46]</li> </ul>
Dispersive micro-Solid Phase Extraction (D- $\mu$ SPE)	<ul style="list-style-type: none"> <li>The approach of conventional DSPE allows the possibility to reduce the amount of sorbent used for the extraction procedure (in the milligram range).</li> </ul>		
Magnetic Solid-Phase Extraction (MSPE).	<ul style="list-style-type: none"> <li>MSPE uses a magnetic adsorbent in a solution.</li> <li>Analytes can be absorbed on the surface to be isolated and</li> </ul>	<ul style="list-style-type: none"> <li>Magnetic particles combined with silica and carbonaceous materials.</li> <li>The most popular materials used for MSPE are</li> </ul>	



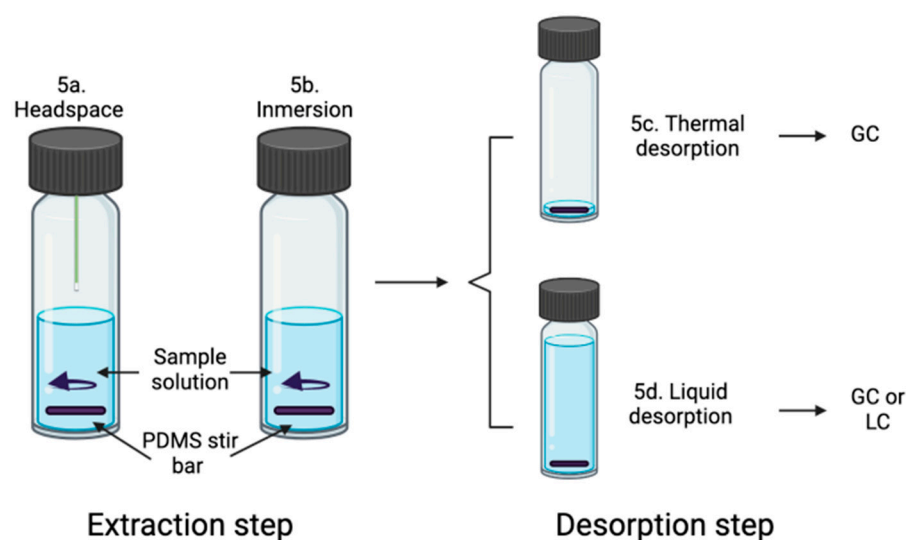
---

eluted with appropriate solvents.	Carbon Nanotubes (CNTs), Activated Carbon (AC), Graphene (GP), and Graphene Oxide (GO) [50].
-----------------------------------	--

---

Another important extraction technique that applies nanosorbents as materials for extraction processes of environmental contaminants is stir bar sorptive extraction (SBSE), which is a novel technique that miniaturizes sample preparation and reduces the solvent amount used for this procedure. In addition, SBSE couples the extraction procedure with the analysis, providing higher sensitivity, better recovery of the analyte, and a reduced sample amount for the analysis [51]. The analytes can be extracted from the matrix into a nonmiscible liquid–liquid extraction [52]. In Figure 5, the SBSE procedure steps are shown. One of the main advantages of SBSE is that it has good applications in the recovery of trace levels of volatile organic compounds (VOCs) and semi-volatile compounds. The main applications of SBSE are described in Table 7. There is a wide variety of materials used for sorptive extraction; one of the most common sorptive extraction phases is polydimethylsiloxane (PDMS), among the two others commercially available, which are polyethylene glycol (PEG) and polyether sulfone (PES)-coated stir bars [53]. However, it is universally acknowledged that the development of new coatings for stir bars is desired, which affects the selectivity, dynamics, and recovery of the SBSE-based method. Here, many of the NPs are introduced into stir bar coatings to improve the extraction efficiency. In such "home-made" stir bars, the adsorption process is mainly involved; however, both absorption and adsorption processes sometimes exist simultaneously. The examples of NMs that are applied to create the new coatings or to modify other materials of stir bars are carbon materials (graphene [54], graphene oxide [55], carbon nanotubes [56], metal–organic frameworks (MOFs) [57,58], and molecular imprinted polymers [59]). Many times, different kinds of NMs are mixed together to enhance the extraction process. A good example of such a solution was presented by Fan et al. [60]. The authors applied MIPs in SBSE as a special coating to improve the selective extraction capability for propranolol (PRO) from urine samples. However, due to the incompatibility in aqueous media and low adsorption capacity of MIPs, which limit its application to stir bars in aqueous samples, a water-compatible graphene oxide (GO)/MIP composite-coated stir bar was prepared. The new water-compatible GO/MIP-coated stir bar was characterized by good mechanical strength and chemical stability. Moreover, due to the polymerization of MIP in the water environment, the recognition ability of prepared stir bars in aqueous samples was improved. In addition, the adsorption capacity for analytes of interest was also increased by the addition of GO in MIP pre-polymer solution. The prepared, new stir bars were applied for the sorptive extraction of PRO coupled to HPLC-UV. The LOD of the proposed procedure was about  $0.37 \text{ gL}^{-1}$ , while the RSD was found to be 7.3%.

Another example of the mixing of two materials was presented by Wu et al. [61]. In this research, a vanillin-MIP-coated SBSE based on the magnetic field-induced self-assembly of multifunctional  $\text{Fe}_3\text{O}_4$ @polyaniline NPs for HPLC-UV analysis of the vanilla flavor enhancer in infant milk powders was presented. The complexes were adsorbed on the surface of a magnetic stir bar under magnetic induction, and the coating of vanillin-MIPs was generated by the one-step copolymerization based on the crosslinking of ethylene glycol dimethacrylate. The molecular imprinting stir bar showed superior selectivity and fast binding kinetics for vanillin, and was used for the enrichment of vanilla-flavor enhancers in infant milk powders. The results measured by HPLC-UV exhibited a good limit of detection of  $2.5\text{--}10.0 \text{ ng mL}^{-1}$ , and the recoveries were 82.1–98.9% with  $\text{RSD} < 7.2\%$ .



**Figure 5.** The main steps for the adsorption of the sample in SBSE can be performed in two different extraction modes: immersion (5a) or headspace (5b) modes. The extraction procedure is followed by thermal desorption if the separation is carried out by gas chromatography (5c) or liquid desorption if the sample is analyzed by liquid chromatography or GC (5d).

**Table 7.** Information on main applications of SBSE.

Type of Analysis	Matrix	Application/Compounds Measured
Water analysis	• Sea water	<ul style="list-style-type: none"> <li>• Phenolic, amine-based, acid, and apolar estrogens in wastewater.</li> <li>• Pesticides (OCPs, carbamates, OPPs, and pyrethroids) in aqueous solutions.</li> </ul>
	• River water	
	• Lake water	
	• Wastewater	
Soil analysis	• Living plants	<ul style="list-style-type: none"> <li>• PBDEs and PCBs in river water [62].</li> <li>• Flame retardants (PCBs and PBDEs) in soil.</li> <li>• Pesticides in living plants and soils [63]</li> <li>• VOCs (chemical signals) in plant material.</li> </ul>
	• Fungi	
	• Soils	
	• Wine	
Food analysis	• Beer	<ul style="list-style-type: none"> <li>• Pesticides in fruits and vegetables [64]</li> <li>• PAHs in beverages such as green tea, wine, and water.</li> <li>• Monoterpenes in fruits and vegetables.</li> <li>• Preservatives in beverages.</li> <li>• VOCs in wine and fruit.</li> </ul>
	• Fruits and vegetables	
	• Juices	
	• Baby food	
	• Herbal teas	
	• Biological tissue	
Biological samples	• Blood plasma	<ul style="list-style-type: none"> <li>• Isolation of methylmercury in human and fish tissues [65]</li> <li>• Xenobiotics metabolites in human urine [62].</li> </ul>
	• Whole blood	
	• Blood serum	
	• Urine	

#### 4. Nanomaterials as Sorbents for Extraction Used for Environmental Samples

What is well known is that the collection of the sample is the first stage in the analytical procedure for the identification of chemical compounds from real samples. One of the choices for this step can be the sorptive extraction method, and, here, nanomaterials are widely applied [4,66]. For most of the samples, a pre-treatment procedure is much often required such as centrifugation, Soxhlet, microwave, or ultrasonic extraction and liquid extraction to separate the analytes from the matrices. After that, analytes can be pre-concentrated by the application of the sorptive extraction method. Such a solution permits



the improvement of the selectivity and sensitivity of the eventual analytical methods for final determination and quantification. Nanomaterials are very often applied for the determination of pollutants such as volatile organic compounds (VOCs) and their by-products [67], pesticides, polychlorinated biphenyls (PCBs), polyaromatic hydrocarbons (PAHs), and endocrine-disrupting chemicals (EDCs) in different kinds of environmental samples [68]. The NMs used in the appropriate extraction technique are dependent on the type of sample. It can be found in the literature that MOFs are applied in the process of air sample preparation for the determination of formaldehyde [69], aromatic hydrocarbons, C2-C5 volatile fatty acids, phenols, indoles [70], toluene, *n*-hexane, butanone, methanol, dichloromethane, and *n*-butylamine [71]. Carbon nanotubes (CNTs) such as graphene-packed needle trap devices [72], single-walled carbon nanotubes-SiO<sub>2</sub> (SWCNTs-SiO<sub>2</sub>) [73], and multi-walled carbon nanotubes-SiO<sub>2</sub> (MWCNT-SiO<sub>2</sub>) [74] have been utilized for the determination of various VOCs in the air in the SPME/needle trap technique.

In the solid and sediment samples, such pollutants can be presented: PAHs, pesticides, PCBs, and EDCs. Due to the occurrence of these compounds at trace-level concentrations, isolation and pre-concentration with the application of a proper sorbent material are also required and can be performed by the use of NMs such as MWCNT-OOH [56,75], MOFs [76,77], and polyaniline-modified zeolite NaY [78].

Nanomaterials-based solid-phase extraction techniques have effectively replaced liquid-liquid extraction methods for the determination of organic pollutants in water samples. This is mainly due to the clean-up, low volume of solvents used, high throughput, broad selectivity, and simple automation. In the literature, such NMs as nanostructured polyaniline-ionic liquid composite [79], cetyltrimethylammonium bromide-modified zeolite NaY [80], polyaniline nanowires [81], and MWCNTs [82] have been examined for the extraction of the different kinds of pollutants that occurred in water samples. It needs to be noted that the sensitivity of the NM-based extraction techniques conjugate with analytical techniques are comparable or even superior to those of other extraction techniques in terms of many validation parameters, including the linear range, accuracy, precision, and LODs.

## 5. Conclusions

During recent decades, various NMs have been introduced and applied as promising media for the adsorption of many organic pollutants such as PCBs, PAHs, EDCs, and other VOCs from different types of environmental samples and others. The nanometer-sized particles are characterized by a large surface area that provides high selectivity, high adsorption capacity, enrichment capability, fast adsorption, and better mechanical and chemical stability as sorbents in extraction techniques such as SPE and SPME. All of the parameters of appropriate NPs used as a sorbent medium in extraction techniques strongly depend on the specific NMs used (Table 8). Not only were the adsorption efficiencies of such a sample treatment solution greatly improved in comparison to commercially available products, but the analytical parameters including sensitivity, selectivity, repeatability, and reproducibility were also improved. In addition, other benefits were achieved such as the reduction in time required for the overall procedure, as well as the reduction in the sample volume. Furthermore, the low cost, eco-friendly, easy modification, and easy separation approaches make NMs more valuable for the pretreatment and extraction of specific analytes from different matrices. However, it must be mentioned that much effort is still required to expand the practical application of NMs for the isolation and preconcentration of trace-level pollutants that occur in environmental samples. In addition, it would be great if universal procedures exist for the manufacturing of NMs characterized by the same morphology, size, and surface chemistry. Future efforts should also be made for the efficient coupling of NM-based sorptive extraction techniques with other types of advanced methodologies as such developments could impact on the wider utility of these procedures in the area of environmental sample analysis. It is also expected that other novel sorbents such as MOFs and functionalized graphite can be used as robust,



high-capacity, and fast-functioning sorbents for some of the extraction techniques and can be commercially available. Depending on the nature of NPs, they can be applied to extend the applicability to more polar solutes; and if the manufacturing of NPs can be performed cost-effectively, it would result in the procedure of choice for many extractions, even making single-use devices such as disposable stir bars possible.

**Table 8.** Comparison and characteristics of specific NPs used as a sorbent in extraction techniques.

Types of Nano-sorbents	Advantages	Limitations	Stability	Selectivity	Reuse time	Extraction Time (min)	Recovery [%]	Applications	Ref
Graphene	Large specific surface area; provides more adsorption sites and loading capacity; low synthesis cost; the technique does not require the application of pressure during the extraction procedure (mainly in the MSPE case)	The use of a material with large surface area may create large backpressure problems (for SPE, microextraction by a packed sorbent (MEPS), and on-line methods)	Good chemical stability under strong-acid, strong-base, and high-salinity conditions; stable mechanical properties	Specific selectivity depending on the modifiers/components used.	50	50	80–113	Applied in SBSE: extraction of PAHs, organochlorine pesticides (OCPs), amino acids, and fluoroquinolones in environmental, food, and biological samples. Applied in MSPE: extraction of naphthols; Applied in SPE: Determination of tetracyclines in milk; determination of metals in environmental samples.	[54,83–87]
Graphene oxide/graphene oxide frameworks (GOFs)	Good adsorption capacity for organic compounds, especially medium and polar compounds; the presence of functional groups in GO can interact with metals and organic analytes by electrostatic and hydrogen bonding; GOFs have a high specific surface area, multiple electronic properties, and high porosity; GO has a good dispersibility in most solvents and is easily lost during the extraction process.	The extraction efficiency is mainly low, and the kinetics is also quite slow (50–90 min)	Good mechanical stability	Specific selectivity depending on the modifiers/components used.	50	50	75–115	Used in SPE: extraction of fatty acids in seeds, insecticides in flowers; Used in MSPE: extraction of OCPs in honey and fruit juice, Determination of PAHs in oil samples; determination of metals in aqueous samples; Used in SBSE for extraction of amphetamine and methamphetamine in biological samples	[88–91]
Carbon nanotubes (CNTs)	CNTs have a tubular structure, high specific surface area, and hydrophobic surface, which are suitable	The specific surface area will vary according to the number of layers. It is characterized by insoluble properties	High mechanical stability.	Through surface modification, e.g., amino, carboxyl	30	30–180	70–120	CNTs have been used as SBSE coatings to separate and enrich organic pollutants from different matri-	[56,92–94]

	for adsorbing non-polar target analytes.	in aqueous solutions and organic solvents. The extraction kinetics is usually slow.		and PEG, their surface-active groups can be increased to promote the EE of polar target analytes.				ces (such as food, biological, and environmental samples) through $\pi$ - $\pi$ interaction, van der Waals forces, and hydrophobic interaction. Used in SBSE for the extraction of OCPs, herbicides, and PAHs in water and environmental samples, extraction of naproxen in biological samples
MOFs	MOFs have available crystal properties, adjustable ultra-high porosity, large BET surface area (2000–7000 m <sup>2</sup> /g) and pore volume, uniform porous structure, abundant functional groups, and excellent photoelectric properties. Different metal centers and ligands are applied to produce MOFs as molecular building blocks, which results in a suitable flexibility for modifying physical and chemical features. Exhibit superior tunability of pore size and functionality	MOFs are sensitive to moisture, the structure is damaged owing to the occupation of water molecules.	High thermal, chemical, and mechanical stability	MOFs can be modified with chemical groups that uniquely affect the overall selectivity and sensitivity of the extraction process.	10–140	30–90	85–110	Hydrophobic interaction and $\pi$ - $\pi$ interaction enable MOFs to adsorb aromatic organic pollutants well. Applied in SBSE for benzylpenicillin in milk and biological samples; in HF-SBSE for phthalates in baby food; in SPE for the extraction of hormones from serum samples; in SPME for extraction of drugs in biological fluids [56,57,95–97]
MIPs	High adsorption efficiency can be observed through various mechanisms, including $\pi$ - $\pi$ interactions between the delocalized $\pi$ -electron system of the target analytes and the aromatic rings, the sorbents, and hydrophobic interactions. A further increase	Low adsorption capabilities that may arise in aqueous media.	Stability can be modified by application of additives (e.g., graphite oxide and nanoparticles, etc.) and/or the deposition of the MOF on substrates.	It has specific recognition and selective adsorption capabilities for specific target molecules (template molecules) and	50–120	10–180	80–110	Applied in SBSE for extraction of estrogens and glucocorticoids from water, milk, and urine samples, for diclofenac extraction in seawater and commercial tablet samples; applied in vortex-assisted d-SPE of parabens from environmental waters, cosmetic creams, and human urine samples. [49,98–102]

in the affinity toward the target analytes can be achieved through functionalization of the MOF sorbent.	their analogs. Exhibit strong affinity toward small organic compounds.	Applied in MSPE for extraction of OPCs in urine, phthalate esters from plasma samples; applied in SPME for extraction of naproxen and its metabolites in biological samples.
--	--	--

**Author Contributions:** Conceptualization, J.P.-W.; software, M.J.S.T.; resources, M.J.S.T. and J.P.-W.; writing—original draft preparation, M.J.S.T. and J.P.-W.; writing—review and editing, S.Z.; visualization, M.J.S.T.; supervision, J.P.-W.; funding acquisition, J.P.-W. All authors have read and agreed to the published version of the manuscript.

**Funding:** This research was funded by Narodowa Agencja Wymiany Akademickiej (NAWA) BPN/FRC/2021/1/0011/DEC/1

**Institutional Review Board Statement:** Not applicable.

**Informed Consent Statement:** Not applicable.

**Data Availability Statement:** Not applicable.

**Acknowledgments:** The authors would like to acknowledge Narodowa Agencja Wymiany Akademickiej (NAWA) BPN/FRC/2021/1/0011/DEC/1. J.P.-W. would like to thank for the access to the database which was provided via program Reaxys Advisors.

**Conflicts of Interest:** The authors declare no conflict of interest.

## References

- Saleh, T.A. Trends in the sample preparation and analysis of nanomaterials as environmental contaminants. *Trends Environ. Anal. Chem.* **2020**, *28*, 1–10. <https://doi.org/10.1016/j.teac.2020.e00101>.
- Khan, W.A.; Arain, M.B.; Soylak, M. Nanomaterials-based solid phase extraction and solid phase microextraction for heavy metals food toxicity. *Food Chem. Toxicol.* **2020**, *145*, 111704. <https://doi.org/10.1016/J.FCT.2020.111704>.
- Nouri, N.; Khorram, P.; Duman, O.; Sibel, T.; Hassan, S. Overview of nanosorbents used in solid phase extraction techniques for the monitoring of emerging organic contaminants in water and wastewater samples. *Trends Environ. Anal. Chem.* **2020**, *25*. <https://doi.org/10.1016/j.teac.2020.e00081>.
- Azzouz, A.; Kailasa, S.K.; Lee, S.S.; Rascón, A.J.; Ballesteros, E.; Zhang, M.; Kim, K.H. Review of nanomaterials as sorbents in solid-phase extraction for environmental samples. *TrAC Trends Anal. Chem.* **2018**, *108*, 347–369. <https://doi.org/10.1016/j.trac.2018.08.009>.
- He, M.; Huang, L.; Zhao, B.; Chen, B.; Hu, B. Advanced functional materials in solid phase extraction for ICP-MS determination of trace elements and their species A review. *Anal. Chim. Acta* **2017**, *973*, 1–24. <https://doi.org/10.1016/j.aca.2017.03.047>.
- Gutiérrez-Serpa, A.; González-Martín, R.; Sajid, M.; Pino, V. Greenness of magnetic nanomaterials in miniaturized extraction techniques: A review. *Talanta* **2021**, *225*, 122053. <https://doi.org/10.1016/J.TALANTA.2020.122053>.
- Wen, Y.; Chen, L.; Li, J.; Liu, D.; Chen, L. Recent advances in solid-phase sorbents for sample preparation prior to chromatographic analysis. *TrAC Trends Anal. Chem.* **2014**, *59*, 26–41. <https://doi.org/10.1016/j.trac.2014.03.011>.
- Chen, L.; Hernandez, Y.; Feng, X.; Müllen, K. From nanographene and graphene nanoribbons to graphene sheets: Chemical synthesis. *Angew. Chem. Int. Ed.* **2012**, *51*, 7640–7654. <https://doi.org/10.1002/anie.201201084>.
- Di, S.; Ning, T.; Yu, J.; Chen, P.; Yu, H.; Wang, J.; Yang, H.; Zhu, S. Recent advances and applications of magnetic nanomaterials in environmental sample analysis. *TrAC Trends Anal. Chem.* **2020**, *126*, 115864. <https://doi.org/10.1016/J.TRAC.2020.115864>.
- Hu, B.; He, M.; Chen, B. Nanometer-sized materials for solid-phase extraction of trace elements. *Anal. Bioanal. Chem.* **2015**, *407*, 2685–2710. <https://doi.org/10.1007/s00216-014-8429-9>.
- Kakavandi, M.G.; Behbahani, M.; Omidi, F.; Hesam, G. Application of Ultrasonic Assisted-Dispersive Solid Phase Extraction Based on Ion-Imprinted Polymer Nanoparticles for Preconcentration and Trace Determination of Lead Ions in Food and Water Samples. *Food Anal. Methods* **2017**, *10*, 2454–2466. <https://doi.org/10.1007/s12161-016-0788-8>.
- Fan, H.T.; Li, J.; Li, Z.C.; Sun, T. An ion-imprinted amino-functionalized silica gel sorbent prepared by hydrothermal assisted surface imprinting technique for selective removal of cadmium (II) from aqueous solution. *Appl. Surf. Sci.* **2012**, *258*, 3815–3822. <https://doi.org/10.1016/J.APSUSC.2011.12.035>.



13. Beeram, S.R.; Rodriguez, E.; Doddavenkatanna, S.; Li, Z.; Pekarek, A.; Peev, D.; Goerl, K.; Trovato, G.; Hofmann, T.; Hage, D.S. Nanomaterials as stationary phases and supports in liquid chromatography. *Electrophoresis* **2017**, *38*, 2498–2512. <https://doi.org/10.1002/elps.201700168>.
14. Tadjarodi, A.; Abbaszadeh, A. A magnetic nanocomposite prepared from chelator-modified magnetite (Fe<sub>3</sub>O<sub>4</sub>) and HKUST-1 (MOF-199) for separation and preconcentration of mercury(II). *Microchim. Acta* **2016**, *183*, 1391–1399. <https://doi.org/10.1007/s00604-016-1770-2>.
15. Andrade-Eiroa, A.; Canle, M.; Leroy-Cancellieri, V.; Cerdà, V. Solid-phase extraction of organic compounds: A critical review (Part I). *TrAC Trends Anal. Chem.* **2016**, *80*, 641–654. <https://doi.org/10.1016/j.trac.2015.08.015>.
16. Augusto, F.; Hantao, L.W.; Mogollón, N.G.S.; Braga, S.C.G.N. New materials and trends in sorbents for solid-phase extraction. *TrAC Trends Anal. Chem.* **2013**, *43*, 14–23. <https://doi.org/10.1016/j.trac.2012.08.012>.
17. Poole, C.F. New trends in solid-phase extraction. *TrAC Trends Anal. Chem.* **2003**, *22*, 362–373. [https://doi.org/10.1016/S0165-9936\(03\)00605-8](https://doi.org/10.1016/S0165-9936(03)00605-8).
18. Camel, V. Solid phase extraction of trace elements. *Spectrochim. Acta Part B At. Spectrosc.* **2003**, *58*, 1177–1233. [https://doi.org/10.1016/S0584-8547\(03\)00072-7](https://doi.org/10.1016/S0584-8547(03)00072-7).
19. Yuan, H.; Mullett, W.M.; Pawliszyn, J. Biological sample analysis with immunoaffinity solid-phase microextraction. *Analyst* **2001**, *126*, 1456–1461. <https://doi.org/10.1039/b101854j>.
20. Kataoka, H. Sample preparation for liquid chromatography. *Liq. Chromatogr. Appl. Second Ed.* **2017**, *2*, 1–37. <https://doi.org/10.1016/B978-0-12-805392-8.00001-3>.
21. Xu, J.; Ouyang, G. Extraction | Solid-phase microextraction. *Encycl. Anal. Sci.* **2019**, 100–108. <https://doi.org/10.1016/B978-0-12-409547-2.14552-4>.
22. Jalili, V.; Barkhordari, A.; Ghiasvand, A. A comprehensive look at solid-phase microextraction technique: A review of reviews. *Microchem. J.* **2020**, *152*, 104319. <https://doi.org/10.1016/j.microc.2019.104319>.
23. Sajid, M. Porous membrane protected micro-solid-phase extraction: A review of features, advancements and applications. *Anal. Chim. Acta* **2017**, *965*, 36–53. <https://doi.org/10.1016/j.aca.2017.02.023>.
24. Souza-Silva, É.A.; Reyes-Garcés, N.; Gómez-Ríos, G.A.; Boyaci, E.; Bojko, B.; Pawliszyn, J. A critical review of the state of the art of solid-phase microextraction of complex matrices III. Bioanalytical and clinical applications. *TrAC Trends Anal. Chem.* **2015**, *71*, 249–264. <https://doi.org/10.1016/j.trac.2015.04.017>.
25. Karimi-Maleh, H.; Shafieizadeh, M.; Taher, M.A.; Opoku, F.; Kiarri, E.M.; Govender, P.P.; Ranjbari, S.; Rezapour, M.; Orooji, Y. The role of magnetite/graphene oxide nano-composite as a high-efficiency adsorbent for removal of phenazopyridine residues from water samples, an experimental/theoretical investigation. *J. Mol. Liq.* **2020**, *298*, 112040. <https://doi.org/10.1016/j.molliq.2019.112040>.
26. Shirani, M.; Parandi, E.; Nodeh, H.R.; Akbari-adergani, B.; Shahdadi, F. Development of a rapid efficient solid-phase microextraction: An overhead rotating flat surface sorbent based 3-D graphene oxide/lanthanum nanoparticles @ Ni foam for separation and determination of sulfonamides in animal-based food products. *Food Chem.* **2022**, *373*, 131421. <https://doi.org/10.1016/J.FOODCHEM.2021.131421>.
27. Guan, X.; Cheng, T.; Wang, S.; Liu, X.; Zhang, H. Preparation of polysulfone materials on nickel foam for solid-phase microextraction of floxacin in water and biological samples. *Anal. Bioanal. Chem.* **2017**, *409*, 3127–3133. <https://doi.org/10.1007/s00216-017-0253-6>.
28. Mei, M.; Pang, J.; Huang, X.; Luo, Q. Magnetism-reinforced in-tube solid phase microextraction for the online determination of trace heavy metal ions in complex samples. *Anal. Chim. Acta* **2019**, *1090*, 82–90. <https://doi.org/10.1016/j.aca.2019.09.028>.
29. Dehghani, Z.; Dadfarnia, S.; Shabani, A.M.H.; Ehrampoush, M.H. Magnetic multi-walled carbon nanotubes modified with polythiophene as a sorbent for simultaneous solid phase microextraction of lead and cadmium from water and food samples. *Anal. Bioanal. Chem. Res.* **2020**, *7*, 509–523.
30. Tuzen, M.; Altunay, N.; Hazer, B.; Mogaddam, M.R.A. Synthesis of polystyrene-polyricinoleic acid copolymer containing silver nano particles for dispersive solid phase microextraction of molybdenum in water and food samples. *Food Chem.* **2022**, *369*, 130973. <https://doi.org/10.1016/J.FOODCHEM.2021.130973>.
31. Dias, F.D.S.; Guarino, M.E.P.; Pereira, A.L.C.; Pedra, P.P.; Bezerra, M.D.A.; Marchetti, S.G. Optimization of magnetic solid phase microextraction with CoFe<sub>2</sub>O<sub>4</sub> nanoparticles unmodified for preconcentration of cadmium in environmental samples by flame atomic absorption spectrometry. *Microchem. J.* **2019**, *146*, 1095–1101. <https://doi.org/10.1016/j.microc.2019.02.005>.
32. Ghorbani, M.; Pedramrad, T.; Aghamohammadhasan, M.; Seyedin, O.; Akhlaghi, H.; Afshar Lahoori, N. Simultaneous clean-up and determination of Cu(II), Pb(II) and Cr(III) in real water and food samples using a magnetic dispersive solid phase microextraction and differential pulse voltammetry with a green and novel modified glassy carbon electrode. *Microchem. J.* **2019**, *147*, 545–554. <https://doi.org/10.1016/j.microc.2019.03.072>.
33. Wierucka, M.; Biziuk, M. Application of magnetic nanoparticles for magnetic solid-phase extraction in preparing biological, environmental and food samples. *TrAC Trends Anal. Chem.* **2014**, *59*, 50–58. <https://doi.org/10.1016/j.trac.2014.04.007>.
34. Giakissikli, G.; Anthemidis, A.N. Magnetic materials as sorbents for metal/metalloid preconcentration and/or separation. A review. *Anal. Chim. Acta* **2013**, *789*, 1–16. <https://doi.org/10.1016/j.aca.2013.04.021>.
35. Wang, S.; Wang, R.; Wu, X.; Wang, Y.; Xue, C.; Wu, J.; Hong, J.; Liu, J.; Zhou, X. Magnetic molecularly imprinted nanoparticles based on dendritic-grafting modification for determination of estrogens in plasma samples. *J. Chromatogr. B Anal. Technol. Biomed. Life Sci.* **2012**, *905*, 105–112. <https://doi.org/10.1016/j.jchromb.2012.08.009>.

36. Ye, L.; Wang, Q.; Xu, J.; Shi, Z. guo; Xu, L. Restricted-access nanoparticles for magnetic solid-phase extraction of steroid hormones from environmental and biological samples. *J. Chromatogr. A* **2012**, *1244*, 46–54. <https://doi.org/10.1016/j.chroma.2012.04.075>.
37. Eskandari, H.; Naderi-Darehshori, A. Preparation of magnetite/poly(styrene-divinylbenzene) nanoparticles for selective enrichment-determination of fenitrothion in environmental and biological samples. *Anal. Chim. Acta* **2012**, *743*, 137–144. <https://doi.org/10.1016/j.aca.2012.07.012>.
38. Bai, S.S.; Li, Z.; Zang, X.H.; Wang, C.; Wang, Z. Graphene-based magnetic solid phase extraction-dispersive liquid-liquid microextraction combined with gas chromatographic method for determination of five acetanilide herbicides in water and green tea samples. *Fenxi Huaxue/Chin. J. Anal. Chem.* **2013**, *41*, 1177–1182. [https://doi.org/10.1016/S1872-2040\(13\)60672-6](https://doi.org/10.1016/S1872-2040(13)60672-6).
39. Najafi, E.; Aboufazeli, F.; Zhad, H.R.L.Z.; Sadeghi, O.; Amani, V. A novel magnetic ion imprinted nano-polymer for selective separation and determination of low levels of mercury(II) ions in fish samples. *Food Chem.* **2013**, *141*, 4040–4045. <https://doi.org/10.1016/j.foodchem.2013.06.118>.
40. Ding, J.; Gao, Q.; Luo, D.; Shi, Z.G.; Feng, Y.Q. n-Octadecylphosphonic acid grafted mesoporous magnetic nanoparticle: Preparation, characterization, and application in magnetic solid-phase extraction. *J. Chromatogr. A* **2010**, *1217*, 7351–7358. <https://doi.org/10.1016/j.chroma.2010.09.074>.
41. Karatapanis, A.E.; Fiamegos, Y.; Stalikas, C.D. Silica-modified magnetic nanoparticles functionalized with cetylpyridinium bromide for the preconcentration of metals after complexation with 8-hydroxyquinoline. *Talanta* **2011**, *84*, 834–839. <https://doi.org/10.1016/j.talanta.2011.02.013>.
42. Islas, G.; Ibarra, I.S.; Hernandez, P.; Miranda, J.M.; Cepeda, A. Dispersive Solid Phase Extraction for the Analysis of Veterinary Drugs Applied to Food Samples: A Review. *Int. J. Anal. Chem.* **2017**, *2017*. <https://doi.org/10.1155/2017/8215271>.
43. Büyüktiryaki, S.; Keçili, R.; Hussain, C.M. Functionalized nanomaterials in dispersive solid phase extraction: Advances & prospects. *TrAC Trends Anal. Chem.* **2020**, *127*, 115893. <https://doi.org/10.1016/j.trac.2020.115893>.
44. Mohammadi, P.; Masrounia, M.; Es'haghi, Z. Magnetic dispersive solid-phase microextraction for determination of two organophosphorus pesticides in cucumber and orange samples. *J. Iran. Chem. Soc.* **2020**, *17*, 3285–3298. <https://doi.org/10.1007/s13738-020-01991-2>.
45. Perestrelo, R.; Silva, P.; Porto-Figueira, P.; Pereira, J.A.M.; Silva, C.; Medina, S.; Câmara, J.S. QuEChERS—Fundamentals, relevant improvements, applications and future trends. *Anal. Chim. Acta* **2019**, *1070*, 1–28. <https://doi.org/10.1016/j.aca.2019.02.036>.
46. Zhang, Y.; Zhao, Y.G.; Muhammad, N.; Ye, M.L.; Zhu, Y. Ultrasound-assisted synthesis of clover-shaped nano-titania functionalized covalent organic frameworks for the dispersive solid phase extraction of N-nitrosamines in drinking water. *J. Chromatogr. A* **2020**, *1618*, 460891. <https://doi.org/10.1016/j.chroma.2020.460891>.
47. Song, J.; Kong, H.; Jang, J. Adsorption of heavy metal ions from aqueous solution by polyrhodanine-encapsulated magnetic nanoparticles. *J. Colloid Interface Sci.* **2011**, *359*, 505–511. <https://doi.org/10.1016/j.jcis.2011.04.034>.
48. Xie, X.; Pan, X.; Han, S.; Wang, S. Development and characterization of magnetic molecularly imprinted polymers for the selective enrichment of endocrine disrupting chemicals in water and milk samples. *Anal. Bioanal. Chem.* **2015**, *407*, 1735–1744. <https://doi.org/10.1007/s00216-014-8425-0>.
49. Taghvimi, A.; Tabrizi, A.B.; Dastmalchi, S.; Javadzadeh, Y. Metal organic framework based carbon porous as an efficient dispersive solid phase extraction adsorbent for analysis of methamphetamine from urine matrix. *J. Chromatogr. B Anal. Technol. Biomed. Life Sci.* **2019**, *1109*, 149–154. <https://doi.org/10.1016/j.jchromb.2019.02.005>.
50. Khalilian, F.; Hanzaki, S.A.; Yousefi, M. Synthesis of a graphene-based nanocomposite for the dispersive solid-phase extraction of vancomycin from biological samples. *J. Sep. Sci.* **2015**, *38*, 975–981. <https://doi.org/10.1002/jssc.201401067>.
51. Prieto, A.; Basauri, O.; Rodil, R.; Usobiaga, A.; Fernández, L.A.; Etchebarria, N.; Zuloaga, O. Stir-bar sorptive extraction: A view on method optimisation, novel applications, limitations and potential solutions. *J. Chromatogr. A* **2010**, *1217*, 2642–2666. <https://doi.org/10.1016/j.chroma.2009.12.051>.
52. Urbanowicz, M.; Zabiegała, B.; Namieśnik, J. Solventless sample preparation techniques based on solid- and vapour-phase extraction. *Anal. Bioanal. Chem.* **2011**, *399*, 277–300. <https://doi.org/10.1007/s00216-010-4296-1>.
53. He, M.; Wang, Y.; Zhang, Q.; Zang, L.; Chen, B.; Hu, B. Stir bar sorptive extraction and its application. *J. Chromatogr. A* **2021**, *1637*, 461810. <https://doi.org/10.1016/J.CHROMA.2020.461810>.
54. Cheng, J.; Zhong, R.; Lin, J.; Zhu, J.; Wan, W.; Chen, X. Linear graphene nanocomposite synthesis and an analytical application for the amino acid detection of *Camellia nitidissima* Chi seeds. *Materials* **2017**, *10*, 443. <https://doi.org/10.3390/ma10040443>.
55. Ribeiro, A.R.; Pedrosa, M.; Moreira, N.F.F.; Pereira, M.F.R.; Silva, A.M.T. Environmental friendly method for urban wastewater monitoring of micropollutants defined in the Directive 2013/39/EU and Decision 2015/495/EU. *J. Chromatogr. A* **2015**, *1418*, 140–149. <https://doi.org/10.1016/J.CHROMA.2015.09.057>.
56. Zou, N.; Yuan, C.; Liu, S.; Han, Y.; Li, Y.; Zhang, J.; Xu, X.; Li, X.; Pan, C. Coupling of multi-walled carbon nanotubes/polydimethylsiloxane coated stir bar sorptive extraction with pulse glow discharge-ion mobility spectrometry for analysis of triazine herbicides in water and soil samples. *J. Chromatogr. A* **2016**, *1457*, 14–21. <https://doi.org/10.1016/j.chroma.2016.06.043>.
57. Shen, C.; Wu, T.; Zang, X. Hollow Fiber Stir Bar Sorptive Extraction Combined with GC-MS for the Determination of Phthalate Esters from Children's Food. *Chromatographia* **2019**, *82*, 683–693. <https://doi.org/10.1007/s10337-018-3679-x>.
58. Wang, C.; Zhou, W.; Liao, X.; Wang, X.; Chen, Z. Covalent immobilization of metal organic frameworks onto chemical resistant poly(ether ether ketone) jacket for stir bar extraction. *Anal. Chim. Acta* **2018**, *1025*, 124–133. <https://doi.org/10.1016/j.aca.2018.04.056>.

59. Liu, R.; Feng, F.; Chen, G.; Liu, Z.; Xu, Z. Barbell-shaped stir bar sorptive extraction using dummy template molecularly imprinted polymer coatings for analysis of bisphenol A in water. *Anal. Bioanal. Chem.* **2016**, *408*, 5329–5335. <https://doi.org/10.1007/s00216-016-9628-3>.
60. Fan, W.; He, M.; You, L.; Zhu, X.; Chen, B.; Hu, B. Water-compatible graphene oxide/molecularly imprinted polymer coated stir bar sorptive extraction of propranolol from urine samples followed by high performance liquid chromatography-ultraviolet detection. *J. Chromatogr. A* **2016**, *1443*, 1–9. <https://doi.org/10.1016/j.chroma.2016.03.017>.
61. Wu, J.; Yang, Z.; Chen, N.; Zhu, W.; Hong, J.; Huang, C.; Zhou, X. Vanillin-molecularly targeted extraction of stir bar based on magnetic field induced self-assembly of multifunctional Fe<sub>3</sub>O<sub>4</sub>@Polyaniline nanoparticles for detection of vanilla-flavor enhancers in infant milk powders. *J. Colloid Interface Sci.* **2015**, *442*, 22–29. <https://doi.org/10.1016/j.jcis.2014.11.025>.
62. Kawaguchi, M.; Ito, R.; Honda, H.; Endo, N.; Okanouchi, N.; Saito, K.; Seto, Y.; Nakazawa, H. Determination of urinary triclosan by stir bar sorptive extraction and thermal desorption-gas chromatography-mass spectrometry. *J. Chromatogr. B Anal. Technol. Biomed. Life Sci.* **2008**, *875*, 577–580. <https://doi.org/10.1016/j.jchromb.2008.10.008>.
63. Zhang, J.X.; Soini, H.A.; Bruce, K.E.; Wiesler, D.; Woodley, S.K.; Baum, M.J.; Novotny, M. V. Putative chemosignals of the ferret (*Mustela furo*) associated with individual and gender recognition. *Chem. Senses* **2005**, *30*, 727–737. <https://doi.org/10.1093/chemse/bji065>.
64. Kassem, M.G. Stir bar sorptive extraction for central nervous system drugs from biological fluids. *Arab. J. Chem.* **2011**, *4*, 25–35. <https://doi.org/10.1016/j.arabjc.2010.06.011>.
65. Rezaee, M.; Mashayekhi, H.A. Solid-phase extraction combined with dispersive liquid-liquid microextraction as an efficient and simple method for the determination of carbamazepine in biological samples. *Anal. Methods* **2012**, *4*, 2887–2892. <https://doi.org/10.1039/c2ay25460c>.
66. Hashemi, S.H.; Kaykhaei, M. Nanoparticle coatings for stir bar sorptive extraction, synthesis, characterization and application. *Talanta* **2021**, *221*, 121568. <https://doi.org/10.1016/j.talanta.2020.121568>.
67. Li, B.; Sauv e, G.; Iovu, M.C.; Jeffries-El, M.; Zhang, R.; Cooper, J.; Santhanam, S.; Schultz, L.; Revelli, J.C.; Kusne, A.G.; et al. Volatile organic compound detection using nanostructured copolymers. *Nano Lett.* **2006**, *6*, 1598–1602. <https://doi.org/10.1021/nl060498o>.
68. Souza-Silva,  .A.; Jiang, R.; Rodr guez-Lafuente, A.; Gionfriddo, E.; Pawliszyn, J. A critical review of the state of the art of solid-phase microextraction of complex matrices I. Environmental analysis. *TrAC Trends Anal. Chem.* **2015**, *71*, 224–235. <https://doi.org/10.1016/J.TRAC.2015.04.016>.
69. Gu, Z.Y.; Wang, G.; Yan, X.P. MOF-5 metal-organic framework as sorbent for in-field sampling and preconcentration in combination with thermal desorption GC/MS for determination of atmospheric formaldehyde. *Anal. Chem.* **2010**, *82*, 1365–1370. <https://doi.org/10.1021/ac902450f>.
70. Vellingiri, K.; Szulejko, J.E.; Kumar, P.; Kwon, E.E.; Kim, K.H.; Deep, A.; Boukhvalov, D.W.; Brown, R.J.C. Metal organic frameworks as sorption media for volatile and semi-volatile organic compounds at ambient conditions. *Sci. Rep.* **2016**, *6*, 1–11. <https://doi.org/10.1038/srep27813>.
71. Huang, C.Y.; Song, M.; Gu, Z.Y.; Wang, H.F.; Yan, X.P. Probing the adsorption characteristic of metal-organic framework MIL-101 for volatile organic compounds by quartz crystal microbalance. *Environ. Sci. Technol.* **2011**, *45*, 4490–4496. <https://doi.org/10.1021/es200256q>.
72. Heidari, M.; Bahrami, A.; Ghiasvand, A.R.; Rafiei Emam, M.; Shahna, F.G.; Soltanian, A.R. Graphene packed needle trap device as a novel field sampler for determination of perchloroethylene in the air of dry cleaning establishments. *Talanta* **2015**, *131*, 142–148. <https://doi.org/10.1016/J.TALANTA.2014.07.043>.
73. Heidari, M.; Bahrami, A.; Ghiasvand, A.R.; Shahna, F.G.; Soltanian, A.R. A novel needle trap device with single wall carbon nanotubes sol-gel sorbent packed for sampling and analysis of volatile organohalogen compounds in air. *Talanta* **2012**, *101*, 314–321. <https://doi.org/10.1016/J.TALANTA.2012.09.032>.
74. Heidari, M.; Bahrami, A.; Ghiasvand, A.R.; Shahna, F.G.; Soltanian, A.R. A needle trap device packed with a sol-gel derived, multi-walled carbon nanotubes/silica composite for sampling and analysis of volatile organohalogen compounds in air. *Anal. Chim. Acta* **2013**, *785*, 67–74. <https://doi.org/10.1016/j.aca.2013.04.057>.
75. Hu, C.; He, M.; Chen, B.; Hu, B. Simultaneous determination of polar and apolar compounds in environmental samples by a polyaniline/hydroxyl multi-walled carbon nanotubes composite-coated stir bar sorptive extraction coupled with high performance liquid chromatography. *J. Chromatogr. A* **2015**, *1394*, 36–45. <https://doi.org/10.1016/j.chroma.2015.03.046>.
76. Zhang, S.; Du, Z.; Li, G. Metal-organic framework-199/graphite oxide hybrid composites coated solid-phase microextraction fibers coupled with gas chromatography for determination of organochlorine pesticides from complicated samples. *Talanta* **2013**, *115*, 32–39. <https://doi.org/10.1016/j.talanta.2013.04.029>.
77. Wu, Y.Y.; Yang, C.X.; Yan, X.P. Fabrication of metal-organic framework MIL-88B films on stainless steel fibers for solid-phase microextraction of polychlorinated biphenyls. *J. Chromatogr. A* **2014**, *1334*, 1–8. <https://doi.org/10.1016/j.chroma.2014.01.079>.
78. Arnnok, P.; Patdhanagul, N.; Burakham, R. Dispersive solid-phase extraction using polyaniline-modified zeolite NaY as a new sorbent for multiresidue analysis of pesticides in food and environmental samples. *Talanta* **2017**, *164*, 651–661. <https://doi.org/10.1016/j.talanta.2016.11.003>.
79. Gao, Z.; Li, W.; Liu, B.; Liang, F.; He, H.; Yang, S.; Sun, C. Nano-structured polyaniline-ionic liquid composite film coated steel wire for headspace solid-phase microextraction of organochlorine pesticides in water. *J. Chromatogr. A* **2011**, *1218*, 6285–6291. <https://doi.org/10.1016/j.chroma.2011.07.041>.



80. Salisaeng, P.; Arnnok, P.; Patdhanagul, N.; Burakham, R. Vortex-Assisted Dispersive Micro-Solid Phase Extraction Using CTAB-Modified Zeolite NaY Sorbent Coupled with HPLC for the Determination of Carbamate Insecticides. *J. Agric. Food Chem.* **2016**, *64*, 2145–2152. <https://doi.org/10.1021/acs.jafc.5b05437>.
81. Bagheri, H.; Alipour, N.; Ayazi, Z. Multiresidue determination of pesticides from aquatic media using polyaniline nanowires network as highly efficient sorbent for microextraction in packed syringe. *Anal. Chim. Acta* **2012**, *740*, 43–49. <https://doi.org/10.1016/j.aca.2012.06.026>.
82. Ma, J.; Xiao, R.; Li, J.; Yu, J.; Zhang, Y.; Chen, L. Determination of 16 polycyclic aromatic hydrocarbons in environmental water samples by solid-phase extraction using multi-walled carbon nanotubes as adsorbent coupled with gas chromatography-mass spectrometry. *J. Chromatogr. A* **2010**, *1217*, 5462–5469. <https://doi.org/10.1016/j.chroma.2010.06.060>.
83. Zhang, Z.; Mwadini, M.A.; Chen, Z. Polytetrafluoroethylene-jacketed stirrer modified with graphene oxide and polydopamine for the efficient extraction of polycyclic aromatic hydrocarbons. *J. Sep. Sci.* **2016**, *39*, 4011–4018. <https://doi.org/10.1002/jssc.201600716>.
84. Zhou, Q.; Lei, M.; Li, J.; Zhao, K.; Liu, Y. Determination of 1-naphthol and 2-naphthol from environmental waters by magnetic solid phase extraction with Fe@MgAl-layered double hydroxides nanoparticles as the adsorbents prior to high performance liquid chromatography. *J. Chromatogr. A* **2016**, *1441*, 1–7. <https://doi.org/10.1016/j.chroma.2016.02.061>.
85. Wu, X.J.; Wang, G.N.; Yang, K.; Liu, H.Z.; Wang, J.P. Determination of Tetracyclines in Milk by Graphene-Based Solid-Phase Extraction and High-Performance Liquid Chromatography. *Anal. Lett.* **2017**, *50*, 641–650. <https://doi.org/10.1080/00032719.2016.1194853>.
86. de Toffoli, A.L.; Maciel, E.V.S.; Fumes, B.H.; Lanças, F.M. The role of graphene-based sorbents in modern sample preparation techniques. *J. Sep. Sci.* **2018**, *41*, 288–302. <https://doi.org/10.1002/jssc.201700870>.
87. Sereshti, H.; Vasheghani Farahani, M.; Baghdadi, M. Trace determination of chromium(VI) in environmental water samples using innovative thermally reduced graphene (TRG) modified SiO<sub>2</sub> adsorbent for solid phase extraction and UV-vis spectrophotometry. *Talanta* **2016**, *146*, 662–669. <https://doi.org/10.1016/j.talanta.2015.06.051>.
88. Fan, W.; He, M.; Wu, X.; Chen, B.; Hu, B. Graphene oxide/polyethyleneglycol composite coated stir bar for sorptive extraction of fluoroquinolones from chicken muscle and liver. *J. Chromatogr. A* **2015**, *1418*, 36–44. <https://doi.org/10.1016/j.chroma.2015.09.052>.
89. Shi, Z.; Zhang, S.; Huai, Q.; Xu, D.; Zhang, H. Methylamine-modified graphene-based solid phase extraction combined with UPLC-MS/MS for the analysis of neonicotinoid insecticides in sunflower seeds. *Talanta* **2017**, *162*, 300–308. <https://doi.org/10.1016/j.talanta.2016.10.042>.
90. Rezabeyk, S.; Manoochehri, M. Speciation analysis of Tl(I) and Tl(III) after magnetic solid phase extraction using a magnetite nanoparticle composite modified with aminodibenzo-18-crown-6 functionalized MIL-101(Cr). *Microchim. Acta* **2018**, *185*, 3–10. <https://doi.org/10.1007/s00604-018-2881-8>.
91. Taghvimi, A.; Hamishehkar, H. Developed nano carbon-based coating for simultaneous extraction of potent central nervous system stimulants from urine media by stir bar sorptive extraction method coupled to high performance liquid chromatography. *J. Chromatogr. B Anal. Technol. Biomed. Life Sci.* **2019**, *1125*. <https://doi.org/10.1016/j.jchromb.2019.06.028>.
92. Editorial, G. Membrane reactors—Part I. *Technology* **2009**, 743–753. <https://doi.org/10.1002/apj>.
93. Ekbatani Amlashi, N.; Hadjmohammadi, M.R. Sol-gel coating of poly(ethylene glycol)-grafted multiwalled carbon nanotubes for stir bar sorptive extraction and its application to the analysis of polycyclic aromatic hydrocarbons in water. *J. Sep. Sci.* **2016**, *39*, 3445–3456. <https://doi.org/10.1002/jssc.201600416>.
94. Serhan, M.; Sprowls, M.; Jackemeyer, D.; Long, M.; Perez, I.D.; Maret, W.; Tao, N.; Forzani, E. Total iron measurement in human serum with a smartphone. *AIChE Annu. Meet. Conf. Proc.* **2019**, *2019*. <https://doi.org/10.1039/x0xx00000x>.
95. Safaei, M.; Foroughi, M.M.; Ebrahimpour, N.; Jahani, S.; Omidi, A.; Khatami, M. A review on metal-organic frameworks: Synthesis and applications. *TrAC Trends Anal. Chem.* **2019**, *118*, 401–425. <https://doi.org/10.1016/j.trac.2019.06.007>.
96. Khoobi, A.; Salavati-Niasari, M.; Ghani, M.; Ghoreishi, S.M.; Gholami, A. Multivariate optimization methods for in-situ growth of LDH/ZIF-8 nanocrystals on anodized aluminium substrate as a nanosorbent for stir bar sorptive extraction in biological and food samples. *Food Chem.* **2019**, *288*, 39–46. <https://doi.org/10.1016/j.foodchem.2019.02.118>.
97. Wu, W.; Lin, F.; Yang, X.; Wang, B.; Lu, X.; Chen, Q.; Ye, F.; Zhao, S. Facile synthesis of magnetic carbon nanotubes derived from ZIF-67 and application to magnetic solid-phase extraction of profens from human serum. *Talanta* **2020**, *207*, 120284. <https://doi.org/10.1016/j.talanta.2019.120284>.
98. Liu, H.; Qiao, L.; Gan, N.; Lin, S.; Cao, Y.; Hu, F.; Wang, J.; Chen, Y. Electro-deposited poly-luminol molecularly imprinted polymer coating on carboxyl graphene for stir bar sorptive extraction of estrogens in milk. *J. Chromatogr. B Anal. Technol. Biomed. Life Sci.* **2016**, *1027*, 50–56. <https://doi.org/10.1016/j.jchromb.2016.05.022>.
99. Manousi, N.; Tzanavaras, P.D.; Zacharis, C.K. Bioanalytical HPLC applications of in-tube solid phase microextraction: A two-decade overview. *Molecules* **2020**, *25*, 2096. <https://doi.org/10.3390/molecules25092096>.
100. Dargahi, R.; Ebrahimzadeh, H.; Asgharinezhad, A.A.; Hashemzadeh, A.; Amini, M.M. Dispersive magnetic solid-phase extraction of phthalate esters from water samples and human plasma based on a nanosorbent composed of MIL-101(Cr) metal-organic framework and magnetite nanoparticles before their determination by GC-MS. *J. Sep. Sci.* **2018**, *41*, 948–957. <https://doi.org/10.1002/jssc.201700700>.

101. Gao, G.; Li, S.; Li, S.; Wang, Y.; Zhao, P.; Zhang, X.; Hou, X. A combination of computational–experimental study on metal-organic frameworks MIL-53(Al) as sorbent for simultaneous determination of estrogens and glucocorticoids in water and urine samples by dispersive micro-solid-phase extraction coupled to UPLC-MS/MS. *Talanta* **2018**, *180*, 358–367. <https://doi.org/10.1016/j.talanta.2017.12.071>.
102. Rocío-Bautista, P.; Martínez-Benito, C.; Pino, V.; Pasán, J.; Ayala, J.H.; Ruiz-Pérez, C.; Afonso, A.M. The metal-organic framework HKUST-1 as efficient sorbent in a vortex-assisted dispersive micro solid-phase extraction of parabens from environmental waters, cosmetic creams, and human urine. *Talanta* **2015**, *139*, 13–20. <https://doi.org/10.1016/j.talanta.2015.02.032>.