

Strong-coupling superconductivity of SrIr₂ and SrRh₂: Phonon engineering of metallic Ir and RhSylwia Gutowska,^{1,*} Karolina Górnicka,² Paweł Wójcik,¹ Tomasz Klimczuk,² and Bartłomiej Wiendlocha^{1,†}¹*Faculty of Physics and Applied Computer Science, AGH University of Science and Technology, Aleja Mickiewicza 30, 30-059 Krakow, Poland*²*Faculty of Applied Physics and Mathematics and Advanced Materials Centre, Gdansk University of Technology,**ul. Narutowicza 11/12, 80-233 Gdańsk, Poland*

(Received 21 May 2021; revised 6 July 2021; accepted 19 July 2021; published 6 August 2021)

Experimental and theoretical studies on superconductivity in SrIr₂ and SrRh₂ Laves phases are presented. The measured resistivity, heat capacity, and magnetic susceptibility confirm the superconductivity of these compounds with $T_c = 6.07$ and 5.41 K, respectively. Electronic structure calculations show that the Fermi surface is mostly contributed by $5d$ ($4d$) electrons of Ir (Rh), with Sr atoms playing the role of electron donors. The effect of the spin-orbit coupling is analyzed and found to be important in both materials. Lattice dynamics and electron-phonon coupling (EPC) are studied and the strong electron-phonon interaction is found, contributed mostly by the low-frequency Ir and Rh vibrations. The enhancement of EPC, when compared to weakly coupled metallic Ir and Rh, is explained by the strong modifications in the propagation of phonons in the network of Ir (Rh) tetrahedrons, which are the building blocks of the Laves phase, and originate from the metallic fcc structures of elemental iridium and rhodium.

DOI: [10.1103/PhysRevB.104.054505](https://doi.org/10.1103/PhysRevB.104.054505)**I. INTRODUCTION**

The widespread family of AB₂ compounds, forming the so-called Laves phases [1–3] is characterized by the C15-type (cubic fcc MgCu₂-type) or C14-type (hexagonal MgZn₂- or MgNi₂- type) crystal structures. Despite the similarities in their structures, Laves phases exhibit a multitude of physical properties including magnetoelastic phase transitions, superconductivity, high hardness, corrosion resistance, ability to storage hydrogen, and on this basis multiple applications in industry have been proposed [4,5]. Moreover, the question why this specific type of crystal structure is so often found among intermetallic compounds [6,7] and alloys [8], including high entropy alloys [9,10], is frequently raised.

Superconductivity in C15-type Laves phases of SrIr₂ and SrRh₂ was first reported by Matthias and Corenzwit [11] with $T_c = 5.7$ and 6.2 K, respectively. Very recently, Horie *et al.* [12] reported the superconducting state parameters for SrIr₂ with $T_c = 5.90$ K, whereas Gong *et al.* [13] performed measurements for SrRh₂ indicating $T_c = 5.40$ K. Those results show that both compounds are moderately or strongly coupled type-II BCS superconductors, and the order of T_c 's is opposite to that reported by Matthias and Corenzwit [11], with larger T_c for the Ir-based compound. Further on, Yang *et al.* [14] reported even higher $T_c = 6.6$ K in SrIr₂ and suggested a non-BCS like behavior of superconductivity under pressure.

In this work, we extend the analysis of superconductivity and its relation to the crystal structure in the two aforementioned Laves phases, SrIr₂ and SrRh₂, by means of experimental and theoretical studies. Resistivity, heat capacity,

and magnetic susceptibility are measured down to 1.7 K and confirm bulk superconductivity with $T_c = 6.07$ K in SrIr₂ and $T_c = 5.41$ K in SrRh₂. Electronic structure, lattice dynamics, and the electron-phonon interaction are studied using the density functional theory (DFT), and the spin-orbit coupling (SOC) effects are discussed. Theoretical results show that both compounds are strongly coupled superconductors, with the electron-phonon coupling (EPC) parameter $\lambda \sim 1$.

As listed above, experimental studies of superconductivity in SrIr₂ and SrRh₂ indicate that their critical temperature may vary depending on sample preparation details, and are in the range 5.7 – 6.6 K (SrIr₂) [11,12,14] and 5.4 – 6.2 K (SrRh₂) [11,13]. Such differences are not unusual, however, importantly for the understanding of superconductivity in these materials, the critical temperatures measured in this work (6.07 and 5.41 K, respectively), together with the presented theoretical analysis show that SrRh₂ is a superconductor with a lower critical temperature than SrIr₂.

Structurally, the Laves phases of SrM₂ ($M = \text{Ir}$ and Rh) may be viewed as the modified metallic fcc structures of iridium and rhodium, whose face-centered cubic elemental cells are formed from the tetrahedrons of M atoms, stacked in a dense-packed structure. To form the Laves phase, a large Sr atom is inserted to the structure where it substitutes every second tetrahedron of M atoms (see, Fig. 1), leaving the remaining unit cell geometry unchanged, only slightly (about 1%) expanding the lattice. Thus, what mainly caught our attention was how this $M_4 \rightarrow \text{Sr}$ substitution changes the very-low- T_c superconductors (T_c of 0.14 K in Ir [16] and 0.3 mK in Rh [17]) into the strongly coupled superconductors with a decent T_c , especially that in both the electronic and phonon structures of SrM₂ we find similarities to the elemental fcc crystals of M . What we found may be called the “phonon engineering” effect, as the strong enhancement

*gutowska@agh.edu.pl

†wiendlocha@agh.edu.pl

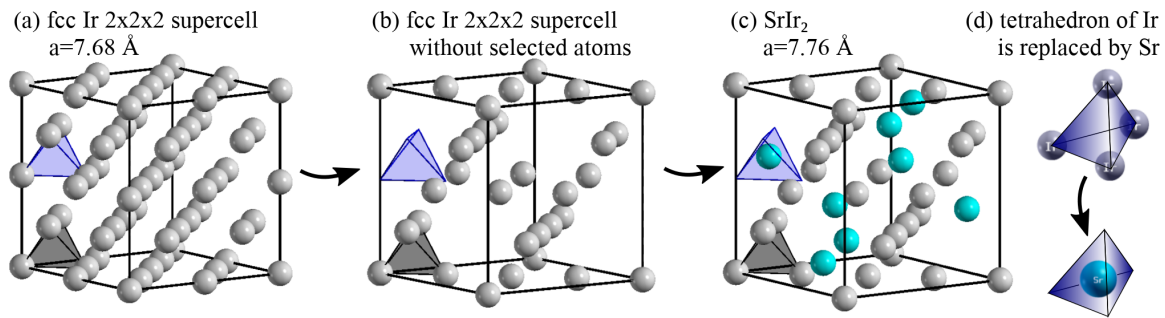


FIG. 1. The crystal structure of SrIr_2 shown as a modified structure of elemental metallic Ir: (a) $2 \times 2 \times 2$ supercell of fcc Ir with two tetrahedrons built of Ir, marked with blue and black color. The whole structure consist of two sublattices of blue and black tetrahedrons; (b) the atoms associated with blue tetrahedrons are removed from the cell; (c) the center of the removed tetrahedrons is filled with Sr atom, while the black tetrahedron sublattice remains unchanged; (d) shows schematic replacement of Ir_4 tetrahedron by one Sr atom. In panel (a) only one of total eight Ir_4 tetrahedrons, which are replaced by Sr, is marked, for more details and a relation between the primitive cells see Fig. S2 in Ref. [15].

of both the electron-phonon interaction and T_c of SrM_2 , in comparison to Ir and Rh, is caused by the substantial lowering of the frequency of several phonon modes, propagating in the network of M tetrahedrons spaced by Sr atoms. These changes are directly related to the replacing of half of dense-packed tetrahedrons by Sr.

II. MATERIALS AND METHODS

Polycrystalline samples of SrIr_2 and SrRh_2 were prepared by a two-step solid state reaction method from the required high-purity elements i.e., Sr pieces (4N, Onyxmet), Ir powder (4N, Mennica-Metale, Poland) and Rh powder (3N8, Mennica-Metale, Poland). An excess of strontium (25%) was added in order to compensate for its loss during the synthesis. The following manipulations were performed in a protective Ar-atmosphere glove box system ($p(\text{O}_2) < 0.5$ ppm). The starting materials were mixed, put into the alumina crucible, and then sealed inside an Ar-filled quartz tube. The ampule was heated to 700°C , then slowly heated to 790°C at a rate of 10°C/h , held at that temperature for 6h and then slowly cooled (20°C/h) and kept at 700°C for 2 h. The as-prepared material was reground well and pressed into a pellet. The samples were then enclosed inside a quartz tube and annealed at 800°C for 12 hours. Products were dense and black in color. To avoid possible decomposition, the samples were kept inside the glove box until characterization. The phase purity and structure of the samples were checked by room-temperature powder x-ray diffraction (pXRD) characterization carried out on a Bruker D2 PHASER diffractometer with $\text{Cu } K_\alpha$ radiation ($\lambda = 1.5406 \text{ \AA}$). The data were analyzed by the LeBail method implemented in the DIFFRAC.SUITE.TOPAS. Magnetization measurements were performed using a Quantum Design EverCool II Physical Property Measurement System (PPMS) with a vibrating sample magnetometer (VSM) function. Both zero-field-cooled (ZFC) and field-cooled (FC) data were collected from 1.7 to 6.5 K under an applied field of 10 Oe. The magnetization was also measured at various temperatures in the superconducting state as a function of the applied field. Resistivity and heat capacity measurements were performed on a PPMS Evercool II. Specific heat was measured in zero

field and field up to 6 T, using the two- τ time-relaxation method. The resistivity was determined using a standard four-probe technique, with four $57\text{-}\mu\text{m}$ -diameter platinum wire leads attached to the flat polished sample surface using conductive silver epoxy (Epotek H20E).

Theoretical calculations of the electronic structure, phonons, and the electron-phonon interaction function were done using the plane-wave pseudopotential method, implemented in the QUANTUM ESPRESSO (QE) [18,19] package. Ultrasoft pseudopotentials were used for all atoms with the exchange-correlation effects included within the Perdew-Burke-Ernzerhof generalized gradient approximation (GGA) scheme [20]. The pseudopotentials have been generated with the help of QE, using input files¹ from PSLIBRARY package [21]. To investigate the effect of the spin-orbit coupling, both the scalar-relativistic and fully relativistic calculations were performed. The electronic structure was calculated on a grid of 12^3 k points for the self-consistent cycle and 24^3 and 48^3 for density of states (DOS) and Fermi surface (FS) calculations. Next, the phonons were calculated with the help of density functional perturbation theory (DFPT) [22] on the grid of 6^3 q points, which results in the number of 16 independent dynamical matrices to be calculated. Electron-phonon interaction function was calculated on the basis of the obtained phonon structure with the integrals over Fermi surface calculated with double-delta smearing technique with the smearing parameter $\sigma = 0.02$ Ry, and on the basis of the electronic structure calculated on the mesh of 24^3 k points.

III. EXPERIMENTAL STUDIES

The room temperature powder XRD patterns (Fig. S1 in Ref. [15]) for SrM_2 ($M = \text{Ir}$ or Rh) confirm that both compounds crystallize in a cubic Laves-phase type structure (space group $Fd\bar{3}m$, No. 227), shown in Fig. 1(c). The LeBail refinement yielded the lattice parameters $a = 7.7932(1) \text{ \AA}$ (SrIr_2) and $a = 7.7069(4) \text{ \AA}$ (SrRh_2). These values are in

¹The input files Rh-(rel)-pbe-rkkjus.in, Ir-(rel)-pbe-rkkjus.in and Sr-(rel)-pbe-rkkjus.in have been used.

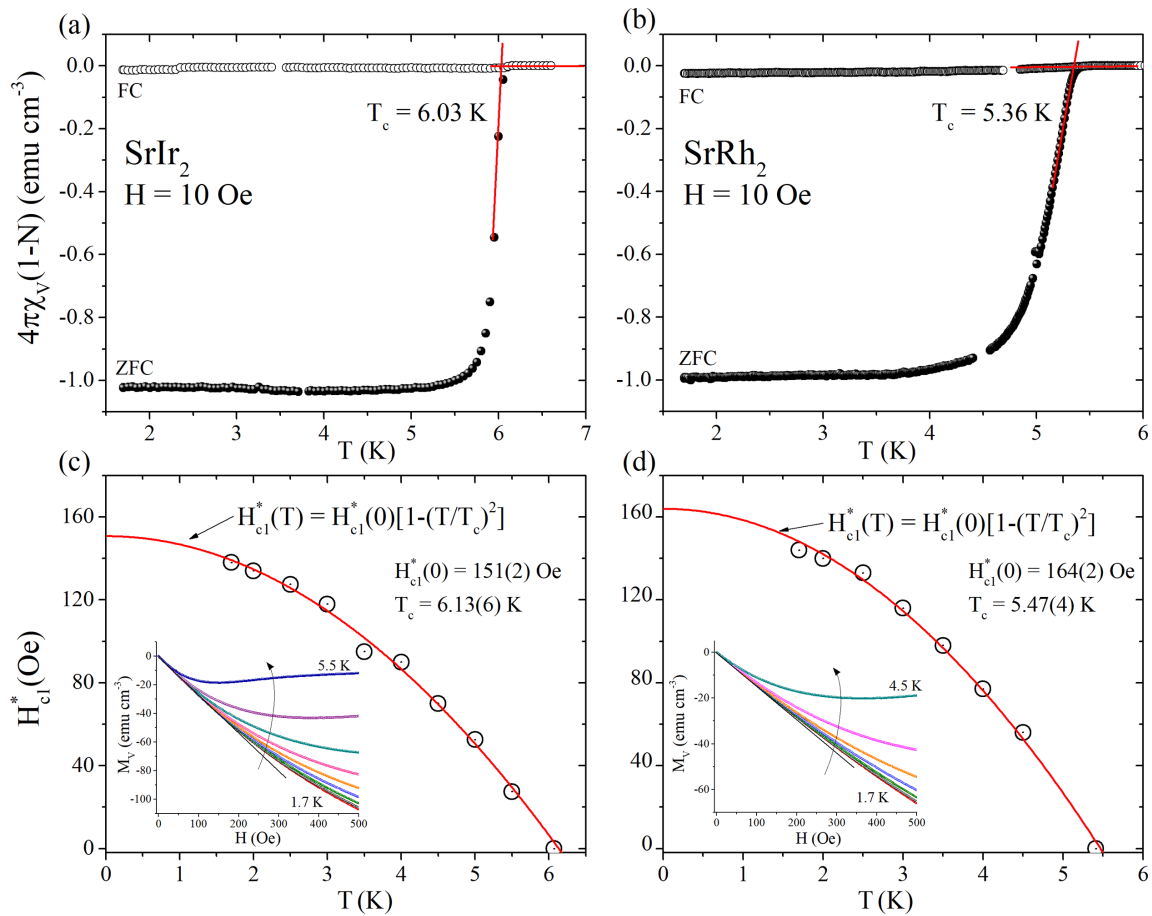


FIG. 2. Zero-field-cooled (open circles) and field-cooled (full circles) temperature-dependent magnetic susceptibility data in $H = 10$ Oe for SrIr₂ (a) and SrRh₂ (b). The temperature dependence of the lower critical fields for (c) SrIr₂; and (d) SrRh₂. Insets in (c) and (d) show the field-dependent magnetization curves $M_V(H)$ taken at different temperatures.

good agreement with those reported in the literature [24]. The Sr and Ir atoms occupy $8b$ and $16c$ Wyckhoff positions. Superconductivity of both compounds was confirmed by magnetic measurements as shown in Fig. 2. The zero-field-cooled (ZFC) and field-cooled (FC) volume magnetic susceptibility (defined as $\chi_V = \frac{M_V}{H}$ where M_V is the volume magnetization and H is the applied magnetic field) versus temperature, measured under 10 Oe magnetic field, is shown in Fig. 2(a) for SrIr₂ and Fig. 2(b) for SrRh₂. The observed strong diamagnetic signal below the transition temperature $T_c = 6.03$ K for SrIr₂ and $T_c = 5.36$ K for SrRh₂ confirms the appearance of superconductivity in both compounds. The critical superconducting temperature was estimated as the intersection between two lines marked in red [see Figs. 2(a) and 2(b)]. The obtained T_c for SrIr₂ is slightly higher than the value reported previously by Horie *et al.* (5.9 K) [12], and lower than 6.6 K reported by Yang *et al.*, while for SrRh₂ T_c is almost identical with that reported by Gong *et al.* [13]. The experimental data were corrected for a demagnetization factor N estimated from an isothermal $M_V(H)$ curves, as explained below. At 1.7 K, the $4\pi\chi_V V(1-N)$ (ZFC) value approaches -1 indicating that the Meissner volume fraction is 100%. The FC signal is much weaker compared to the ZFC signal, usually

resulting from strong flux trapping, as is typically observed in polycrystalline samples.

The magnetic isotherms measured over a range of temperatures below T_c are presented in the inset of Fig. 2(c) for SrIr₂ and Fig. 2(d) for SrRh₂. Assuming that the initial linear response to the field is perfectly diamagnetic, we obtain a demagnetization factor N , which is 0.71 for the Ir variant and 0.45 for the Rh variant. For an analysis of the lower critical field (H_{c1}^*) the point of deviation from the full Meissner state was estimated for each temperature. To precisely calculate this point, we follow the methodology described elsewhere [25,26]. The temperature dependence of H_{c1}^* is plotted in the main panel of Figs. 2(c) and 2(d) for SrIr₂ and SrRh₂, respectively. An additional point for $H = 0$ is a zero field transition temperature taken from the heat capacity measurement. The values determined for both samples are fitted using the Ginzburg-Landau equation [27]

$$H_{c1}^*(T) = H_{c1}^*(0) \left[1 - \left(\frac{T}{T_c} \right)^2 \right], \quad (1)$$

where $H_{c1}^*(0)$ is the lower critical field at 0 K. The quadratic expression fits the data very well and yields $H_{c1}^*(0) =$

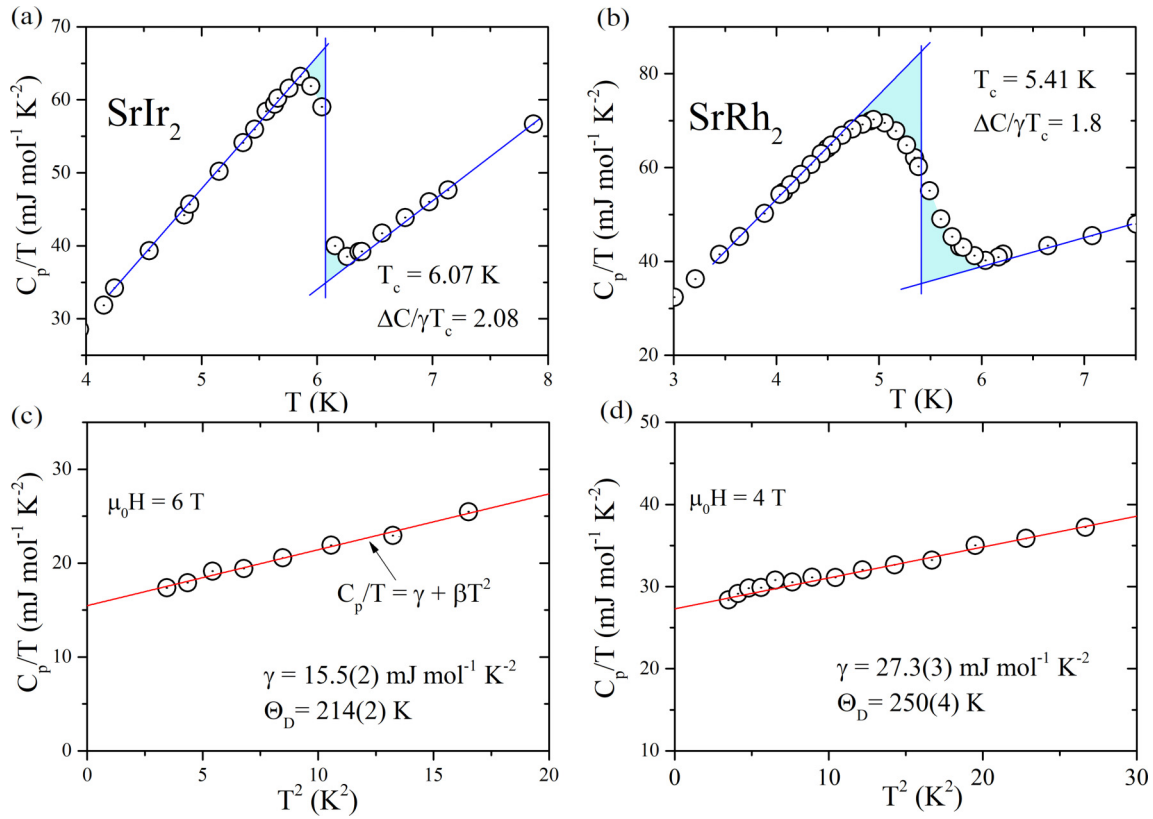


FIG. 3. Zero-field specific heat divided by temperature (C_p/T) versus temperature for (a) SrIr₂; and (b) SrRh₂. C_p/T vs T^2 measured in 6 and 4 T field (in the normal state) for (c) SrIr₂; and (d) SrRh₂, fitted to $C_p/T = \gamma + \beta T^2$.

151(2) Oe and $T_c = 6.13(6)$ K for the Ir variant, and $H_{c1}^*(0) = 164(2)$ Oe and $T_c = 5.47(4)$ K for the Rh variant. Correcting for the demagnetization factor, the lower critical field at 0 K is calculated (by formula $H_{c1} = \frac{H_{c1}^*(0)}{1-N}$) to be $H_{c1}(0) = 522$ Oe (52.2 mT) for SrIr₂ and $H_{c1}(0) = 298$ Oe (29.8 mT) for SrRh₂. Estimated values are larger than the previously reported by Horie *et al.* [12] for SrIr₂ (10.1 mT) and Gong *et al.* [13] for SrRh₂ [10.1(3) mT]. The discrepancy may be due to the demagnetization correction that was applied in this work.

The characterization of the superconducting transition by specific heat measurements is summarized in Figs. 3(a) and 3(c) for SrIr₂, and Figs. 3(b) and 3(d) for SrRh₂. Panels (a) and (b) show the zero-field data plotted as C_p/T versus T . The bulk superconductivity in both compounds is manifested by a large anomaly at 6.07 K for SrIr₂ and 5.41 K for SrRh₂, in agreement with the magnetization data presented above. In contrary to a sharp heat capacity jump for SrIr₂, a rather broad transition for SrRh₂ is observed. This may be caused by the sample inhomogeneity, supported by a lower residual resistivity ratio (RRR) value, discussed below. Experimental data measured under the applied magnetic field [panels (c) and (d) in Fig. 3], represents the normal state specific heat of both compounds. The data plotted as C_p/T versus T^2 can be fitted using the formula $\frac{C_p}{T} = \gamma + \beta T^2$, where the first and the second terms are the electronic specific heat coefficient and

phonon contribution, respectively. The fit yields $\gamma = 15.5(2)$ mJ mol⁻¹ K⁻² and $\beta = 0.595(1)$ mJ mol⁻¹ K⁻⁴ for SrIr₂ and $\gamma = 27.3(3)$ mJ mol⁻¹ K⁻² and $\beta = 0.376(4)$ mJ mol⁻¹ K⁻⁴ for SrRh₂. The Debye temperature (Θ_D) can be then calculated through the relationship $\Theta_D = (\frac{12\pi^4}{5\beta} nR)^{\frac{1}{3}}$, where $R = 8.31$ J mol⁻¹ K⁻¹ is the ideal gas constant, and $n = 3$ is the number of atoms per formula unit. The resulting values of Θ_D are 214(2) K for SrIr₂ and 250(4) K for SrRh₂, however, one has to remember that for such a complex crystal structure, with six atoms in the primitive cell, the phonon spectrum will be far from a simple Debye model, as we will see below. The calculated value of Debye temperature for SrIr₂ is slightly higher than reported previously (180 K [12]) however, it should be noted that the value of β , and hence Θ_D , is strongly affected by the temperature range employed for the fit.

As commonly practised with these parameters, the EPC constant λ can be estimated from the McMillan's equation [28]

$$\lambda = \frac{1.04 + \mu^* \ln\left(\frac{\Theta_D}{1.45T_c}\right)}{(1 - 0.62\mu^*) \ln\left(\frac{\Theta_D}{1.45T_c}\right) - 1.04}, \quad (2)$$

where μ^* is the repulsive screened Coulomb pseudopotential parameter, usually taken as $\mu^* = 0.13$ [28]. In that case, one obtains $\lambda = 0.77$ for SrIr₂ and $\lambda = 0.70$ for SrRh₂, suggesting that both compounds are moderately coupled

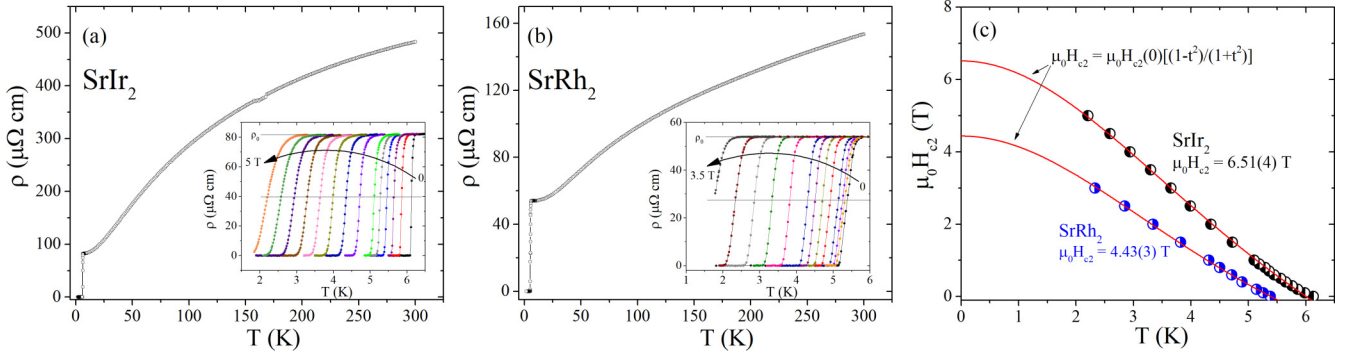


FIG. 4. The electrical resistivity of (a) SrIr₂; and (b) SrRh₂ versus temperature, measured in zero applied magnetic field. The insets show the expanded plot of $\rho(T)$ in the vicinity of the superconducting transition for different values of H ; (c) Temperature dependence of the upper critical field, determined from the electrical resistivity data.

superconductors. Furthermore, for both compounds, the normalized specific heat jump ($\Delta C/\gamma T_c$), equal to 2.08 for SrIr₂ and 1.8 for SrRh₂ exceeds the weak-coupling BCS value of 1.43, similarly to what was reported in Refs. [12,13]. For such a case, we may apply the approximate formula [29] for the specific heat jump in strongly coupled superconductors:

$$\frac{\Delta C_p}{\gamma T_c} = 1.43 \left[1 + 53 \left(\frac{T_c}{\langle \omega_{\log}^{\alpha^2 F} \rangle} \right)^2 \ln \left(\frac{\langle \omega_{\log}^{\alpha^2 F} \rangle}{3T_c} \right) \right] \quad (3)$$

which allows to estimate the logarithmic average phonon frequency $\langle \omega_{\log}^{\alpha^2 F} \rangle$ weighted by the electron-phonon interaction [see Eq. (11)]. We obtain $\langle \omega_{\log}^{\alpha^2 F} \rangle = 79$ K for SrIr₂ and $\langle \omega_{\log}^{\alpha^2 F} \rangle = 104$ K for SrRh₂. Having $\langle \omega_{\log}^{\alpha^2 F} \rangle$ we may avoid relying on the Debye approximation for the phonon spectrum and calculate λ using the Allen-Dynes formula for T_c [30]:

$$T_c = \frac{\langle \omega_{\log}^{\alpha^2 F} \rangle}{1.2} \exp \left[\frac{-1.04(1 + \lambda)}{\lambda - \mu^*(1 + 0.62\lambda)} \right]. \quad (4)$$

Taking $\mu^* = 0.13$ the estimated λ are 1.17 for SrIr₂ and 0.93 for SrRh₂, and are larger than obtained from the inverted McMillan equation, pointing to the strong coupling regime, in agreement with the enhanced value of $\frac{\Delta C_p}{\gamma T_c}$. These values will be used as the experimental estimates of λ in the remaining part of this work.

Figures 4(a) and 4(b) show the temperature-dependent electrical resistivity $\rho(T)$ from 1.8 K to 300 K for SrIr₂ and SrRh₂, respectively. For both compounds, the $\rho(T)$ curve in the normal state exhibits typical metallic behavior ($\frac{d\rho}{dT} > 0$). The residual resistivity ratio RRR is found to be $\frac{\rho(300)}{\rho(10)} = 5.9$ for the Ir analog and 2.9 for the Rh analog. These values can be attributed to the polycrystalline nature of our samples. At low temperatures, superconductivity is manifested by a sharp drop in resistivity, down to $\rho = 0$ value. The critical temperature from the resistivity measurements is $T_c = 6.14$ K for SrIr₂ and $T_c = 5.4$ K for SrRh₂, where T_c is defined as 50% decrease of the resistivity with respect to its normal state value. The low-temperature resistivity under applied magnetic

field is emphasized in the inset of Figs. 4(a) and 4(b). As expected, T_c shifts to lower temperature and the superconducting transition becomes broader with increasing magnetic field. Using the same criterion as for zero-field $\rho(T)$ data, we determined the temperature variation of the upper critical field ($\mu_0 H_{c2}$) for both compounds, presented in Fig. 4(c). The data were fitted with the Ginzburg-Landau expression [27]:

$$\mu_0 H_{c2}(T) = \mu_0 H_{c2}(0) \frac{1 - t^2}{1 + t^2}, \quad (5)$$

where $t = \frac{T}{T_c}$ and T_c is the transition temperature at zero magnetic field. The relation fairly well describes the experimental data and one can obtain the values of $\mu_0 H_{c2}(0)$: 6.51(4) and 4.43(3) T for SrIr₂ and SrRh₂, respectively.

Having the lower and upper critical fields, we find the coherence length with the formula $\xi_{GL} = \sqrt{\frac{\phi_0}{2\pi H_{c2}}}$ and the penetration depth with self-consistent formula $\frac{4\pi H_{c1}}{\phi_0} \lambda_{GL}^2 = \ln \frac{\lambda_{GL}}{\xi_{GL_2}}$. These parameters are equal to $\xi_{GL} = 71$ Å and $\lambda_{GL} = 890$ Å in case of SrIr₂, while for SrRh₂ we have $\xi_{GL} = 86$ Å and $\lambda_{GL} = 1210$ Å. This gives the Ginzburg-Landau parameter $\kappa_{GL} = \frac{\lambda_{GL}}{\xi_{GL}}$ equal to 13 for SrIr₂ and 14 for SrRh₂ in agreement with the type-II nature of the studied superconductors.

All the above-described superconducting properties of studied materials are summarized in the Table I. For comparison, values obtained by Horie *et al.* and Gong *et al.* are also presented.

IV. ELECTRONIC STRUCTURE

A. Charge density and bonding

In the first step of our theoretical study, the scalar-relativistic equilibrium unit cell volumes of both SrM₂ compounds were calculated and obtained lattice constants are less than 1% smaller than the experimental ones (see Table II). Due to the larger size of Ir atom, the lattice constant of SrIr₂ is about 2% larger than that of SrRh₂. As we have mentioned in the Introduction, the crystal structure of SrM₂ is obtained from the $2 \times 2 \times 2$ supercells of elemental fcc structures of M by substitution of half of M tetrahedrons with Sr atoms, placed

TABLE I. The superconducting properties of SrIr₂ and SrRh₂ extracted from experimental data. Additionally the critical temperature of SrIr₂ equal to $T_c = 6.6$ K was measured in Ref. [14].

| | Unit | SrIr ₂ ^a | SrIr ₂ ^b | SrRh ₂ ^a | SrRh ₂ ^c |
|---------------------------|--------------------------------------|--------------------------------|--------------------------------|--------------------------------|--------------------------------|
| T_c | K | 6.07 | 5.90 | 5.41 | 5.40 |
| $\mu_0 H_{c_2}(0)$ | T | 6.51(4) | 5.90 | 4.43(3) | 4.01(5) |
| $\mu_0 H_{c_1}(0)$ | mT | 52.2 | 10.1 | 29.8 | 10.1(3) |
| λ | — | 1.17 | 0.84 | 0.93 | 0.71 |
| $\xi_{GL}(0)$ | Å | 71 | 75 | 86 | 91 |
| $\lambda_{GL}(0)$ | Å | 890 | 2370 | 1210 | 2291 |
| κ | — | 12.53 | 31.7 | 14.02 | 23.3(2) |
| γ | mJ mol ⁻¹ K ⁻² | 15.5(2) | 11.9 | 27.3(3) | 22.9(3) |
| β | mJ mol ⁻¹ K ⁻⁴ | 0.595(1) | 0.98 | 0.376(4) | 0.44(3) |
| Θ_D | K | 214(2) | 180 | 250(4) | 237(5) |
| RRR | — | 5.9 | — | 2.9 | 2.4 |
| $\Delta C_p/(\gamma T_c)$ | — | 2.08 | 1.71 | 1.80 | 1.78(2) |

^aThis work.

^bHorie, Horigane, Nishiyama, Akimitsu, Kobayashi, Onari, Kambe, Kubozono, and Akimitsu [12].

^cGong, Wang, Wang, and Lei [13].

in the center of mass of the removed tetrahedrons (see Fig. 1). In Table II, the interatomic distances are compared. In SrM₂, Ir (Rh) atoms have 6 nearest M neighbors, distant by 2.78 Å (2.72 Å), in comparison to 12 atoms in the first coordination sphere in elemental fcc M crystals, where the distances are slightly smaller (2.71 and 2.69 Å, respectively). Similar distances and tetrahedron geometry suggest the similar character and strength of metallic M - M bonding in both elemental metals and Laves phases. The second coordination sphere of M in SrM₂ contains six Sr atoms distant by 3.25 Å (SrIr₂) and 3.19 Å (SrRh₂), while in the case of fcc M crystals it contains six atoms distant by 3.84 and 3.80 Å, respectively. Sr in Laves phase is 12-fold coordinated by M atoms (distances of 3.25 and 3.19 Å) and has six next-nearest Sr neighbors (distances of 3.40 and 3.33 Å).

Due to the substitution of a half of the dense-packed four-atomic M tetrahedrons in the elemental metallic structure by a single Sr alkaline earth atom, the structure becomes locally loosely packed and a lot of “free” space around Sr atoms appears, with much lower charge density. In Fig. 5, valence charge density is plotted on (111) and (110) planes. Originating from the elemental fcc structures of Ir or Rh, the hexagonal (111) metallic layers of M atoms are seen in Fig. 5(a), which are separated by corrugated Sr- M atomic layers [Fig. 5(b)]. Here, each 12-fold coordinated Sr atom is located above or

TABLE II. Lattice constant of SrM₂ and M ($M = \text{Ir, Rh}$) obtained from experimental data a_{expt} and computed by optimization of the unit cell a_{calc} , as well as the distances between the nearest atoms in the unit cell. All quantities are given in units of Å.

| | a_{expt} | a_{calc} | M - M dist. | M -Sr dist. | Sr-Sr dist. |
|-------------------|-------------------|-------------------|-----------------|---------------|-------------|
| SrIr ₂ | 7.793 | 7.753 | 2.775 | 3.254 | 3.399 |
| SrRh ₂ | 7.707 | 7.781 | 2.721 | 3.190 | 3.332 |
| Ir [23] | 3.838 | 3.883 | 2.714 | — | — |
| Rh [23] | 3.803 | 3.866 | 2.689 | — | — |

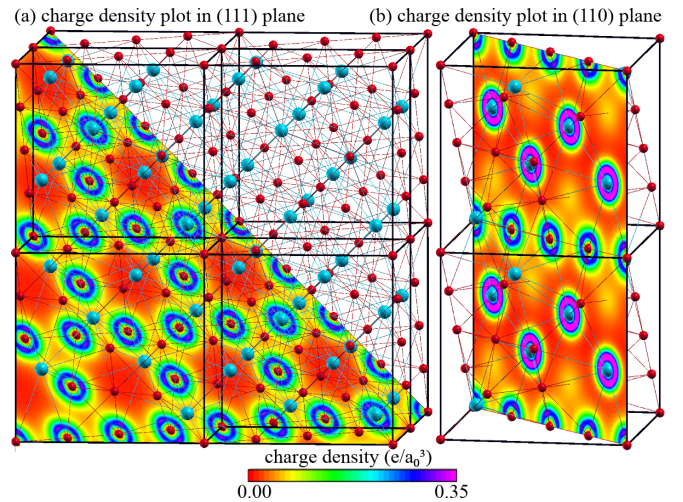


FIG. 5. Charge density (in e/a_0^3 units, where e is the elementary charge and a_0 is the Bohr radius) plotted in the supercell of SrIr₂ (a) on (111) plane, where the Ir hexagons are visible; and (b) on (110) plane, where the low-density space around Sr atoms is visible.

below the center of M hexagon. As this is a cubic structure, the hexagonal layers may be distinguished in all planes equivalent to (111) (all M atoms are equivalent). The “empty” regions of low charge density around Sr are well seen in Fig. 5(b). The Bader analysis, made using the CRITIC2 software [31], shows the mixed ionic-covalent character of Ir-Sr bonding, as 1.27 of two $6s$ electrons of Sr is transferred to Ir atoms, giving an additional 0.63 electrons per Ir. This remains in agreement with the difference in the Pauling electronegativity of these elements (2.20 for Ir and 0.95 for Sr). In spite of the different electronic configuration of free atoms ($[\text{Xe}]4f^{14}5d^76s^2$ for Ir and $[\text{Kr}]4d^85s^1$ for Rh) and smaller electron affinity of Rh (1.14 eV) comparing to Ir (1.57 eV) nearly the same charge transfer occurs for the case of SrRh₂ compound (1.24 of Sr electrons are transferred to two Rh atoms), leading to the same character of Rh-Sr bonding, and similar charge density distribution.

The impact of the described change of structure on the properties of the material is underlined by the value of bulk modulus K_0 , calculated from Murnaghan equation of state [32], $P(V) = \frac{K_0}{K'_0} \left(\frac{V}{V_0} \right)^{-K'_0} - 1$, where V is a volume of the unit cell at pressure P , V_0 is volume at ambient pressure and $K'_0 = \left. \frac{\partial K_0}{\partial P} \right|_{P=0}$. The local reduction of the packing density of atoms by the formation of an “empty space” between the Ir tetrahedrons reduces the bulk modulus in the Laves phase from 324 GPa in Ir to 138 GPa in SrIr₂ (in a good agreement with the experimental value of $K_0 = 148.7$ GPa [14]), and from 244 GPa in Rh to 105 GPa in SrRh₂.

B. Band structure of SrIr₂

Figures 6 and 7 present the calculated band structure, densities of states, and Fermi surface of SrIr₂. Densities of states are in fair agreement with those presented in Ref. [12]. Sr atom contributes two $5s$ valence electrons, while Ir seven $5d$ electrons and two $6s$ electrons. In the crystal structure of SrIr₂, there are two formula units (f.u.) per primitive cell, thus

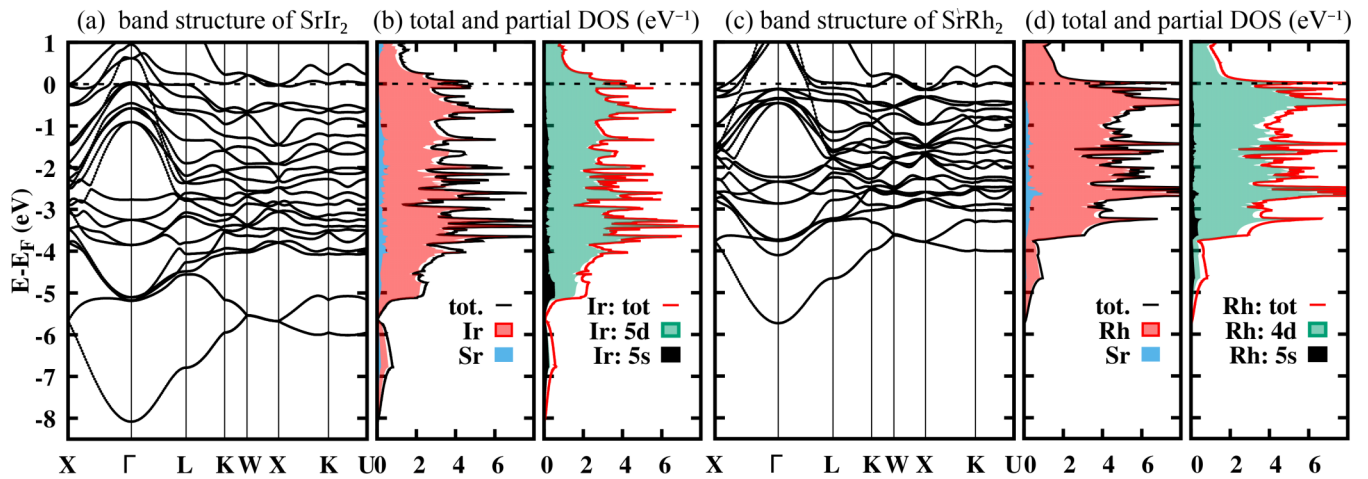


FIG. 6. Electronic structure of [(a) and (b)] SrIr₂ and [(c) and (d)] SrRh₂ in terms of band structure and densities of states. Total DOS is marked with black line and partial DOS is marked with colored lines. Results obtained with SOC.

there are 40 valence electrons in the primitive cell, distributed among ~20 occupied electronic bands. As shown in Fig. 6(a), these bands span the energy range from -8 eV to E_F , with a single band between -8 and -5.5 eV separated from the main valence band block. The partial atomic DOS shows that the valence band is contributed mostly by *d* states of Ir, limiting the role of Sr to charge donor.

In Fig. 7, the large effect of SOC is shown by comparison of the band structure, DOS, and Fermi surface of SrIr₂

calculated without [(a)–(f)] and with SOC [(g)–(n)]. In the scalar-relativistic case, the Fermi level is located on the slope of DOS and is crossed by four bands. This gives the four pieces of the Fermi surface shown in Figs. 7(c)–7(f), colored with respect to the Fermi velocity. There are two Γ -centered holelike sheets [panels (c) and (d)] and two electron-like pieces with sheets centered at *X* point [panels (e) and (f)]. When SOC is included [Figs. 7(g)–7(n)], the DOS peak, seen in the scalar-relativistic case, is split, and the Fermi level is

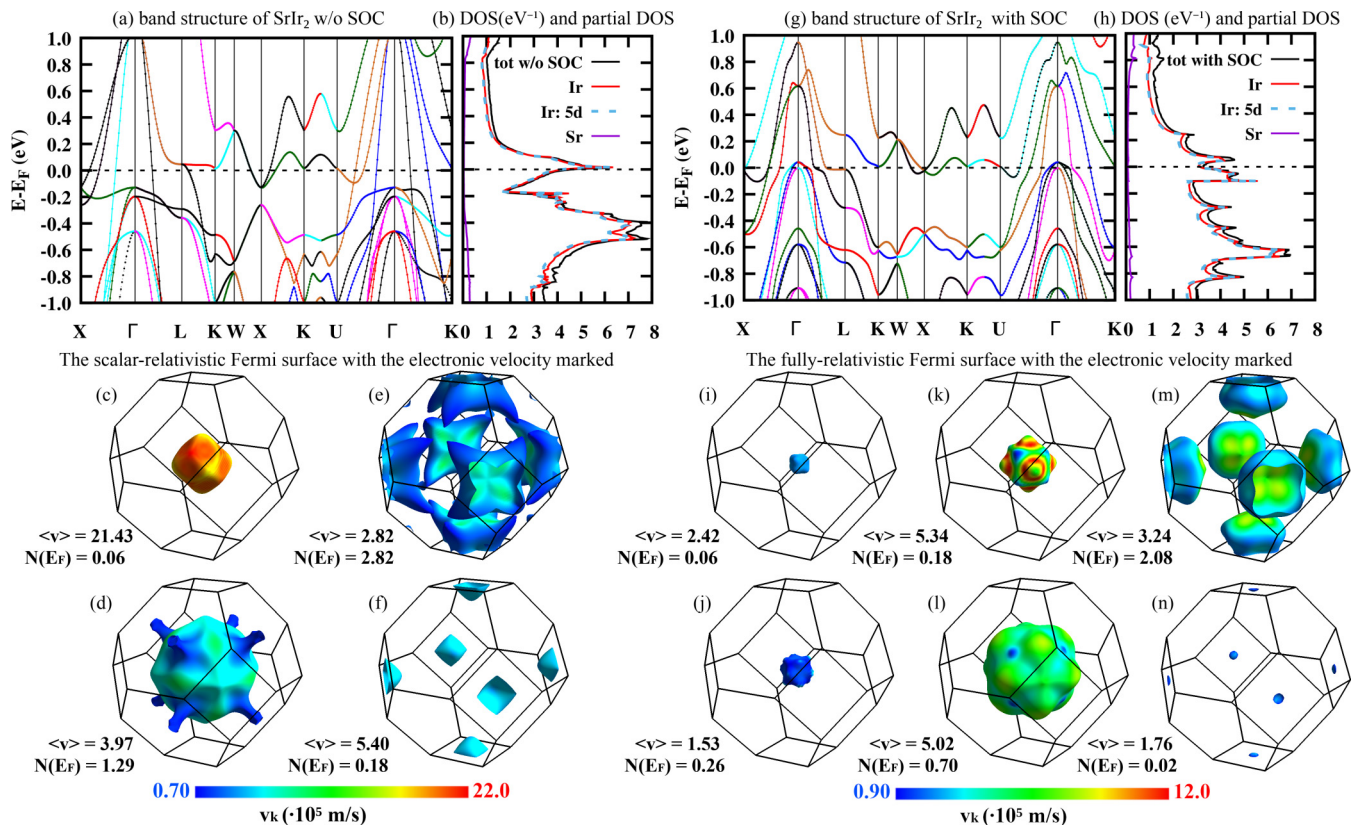


FIG. 7. The scalar-relativistic [(a)–(f)] and fully relativistic [(g)–(n)] electronic structure of SrIr₂ in terms of band structure (the points matched to each other with help of symmetry analysis are connected with colored lines), DOS with atomic contributions and Fermi surface colored with respect to velocity. Average Fermi velocity (v) (10^5 m/s) and density of states $N(E_F)$ (eV^{-1}) for each of the FS sheets are shown.

TABLE III. Electronic structure: the density of states at the Fermi level $N(E_F)$ (expressed in units of eV^{-1} per f.u.), Sommerfeld coefficient: band structure value γ_{band} [Eq. (6)] and the experimental value γ_{expt} (both in $\text{mJ mol}^{-1} \text{K}^{-2}$); Renormalization factor λ_γ calculated from Sommerfeld coefficients using Eq. (7).

| | w/o SOC | | with SOC | | with SOC | |
|------------------------|-------------------|-------------------|-------------------|-------------------|-------------------|-------------------|
| | SrIr ₂ | SrRh ₂ | SrIr ₂ | SrRh ₂ | Ir | Rh |
| $N(E_F)$ | 4.63 | 5.52 | 3.27 | 5.58 | 0.93 | 1.42 |
| γ_{band} | 10.92 | 13.02 | 7.72 | 13.14 | 2.20 | 3.35 |
| γ_{expt} | | | 15.50 | 27.30 | 3.27 ^a | 4.65 ^a |
| λ_γ | 0.42 | 1.10 | 1.01 | 1.08 | 0.49 | 0.39 |

^aFurukawa, Reilly, and Gallagher [34].

located in between the two peaks in the local minimum of the DOS, which reduces $N(E_F)$ from 4.63 to 3.27 eV^{-1} per f.u. (see Table III). Both the values and the reducing tendency after including SOC agree with DOS calculations of Ref. [12]. The Fermi surface of SrIr₂ now consists of six pockets in total (four Γ -centered holelike pockets and two X -centered electronlike pockets). The additional two small, gamma-centered holelike pockets [Figs. 7(i) and 7(j)] not seen in the scalar-relativistic case appear due to a shift of the two low-velocity bands, which were placed just below E_F . The other four pieces of the Fermi surface [Figs. 7(k)–7(n)] are moderately modified when compared to their scalar-relativistic counter-parts in

Figs. 7(c)–7(f). The partial DOS shown in Fig. 7(b) confirms that Fermi surface is contributed by d states of Ir.

From the obtained densities of states at the Fermi level, $N(E_F)$, the band structure values of the Sommerfeld coefficient [33]

$$\gamma_{\text{band}} = \frac{\pi^2}{3} k_B^2 N(E_F) \quad (6)$$

are calculated and collected in Table III. Comparing with the values obtained from the heat capacity measurements, γ_{expt} , the electron-phonon coupling parameter λ is estimated as [33]

$$\gamma_{\text{expt}} = \gamma_{\text{band}}(1 + \lambda_\gamma). \quad (7)$$

In the case of SrIr₂, we obtain the value close to that expected based on the T_c measurements, $\lambda_\gamma = 1.10$ only when SOC is included in the calculation of $N(E_F)$. This shows the importance of SOC for the analysis of SrIr₂, as the scalar-relativistic density of states would yield $\lambda_\gamma = 0.42$.

C. Band structure of SrRh₂

Band structure and DOS of SrRh₂ are plotted in Fig. 6 next to that of SrIr₂ for a convenient comparison, whereas more details near the Fermi energy are shown in Fig. 8. Because of their isoelectronic nature, both Laves phases have qualitatively similar electronic structures. However, in correlation with the presence of $4d$ orbitals in Rh, instead of $5d$ in Ir, valence bands of SrRh₂ are less dispersive and spread over a

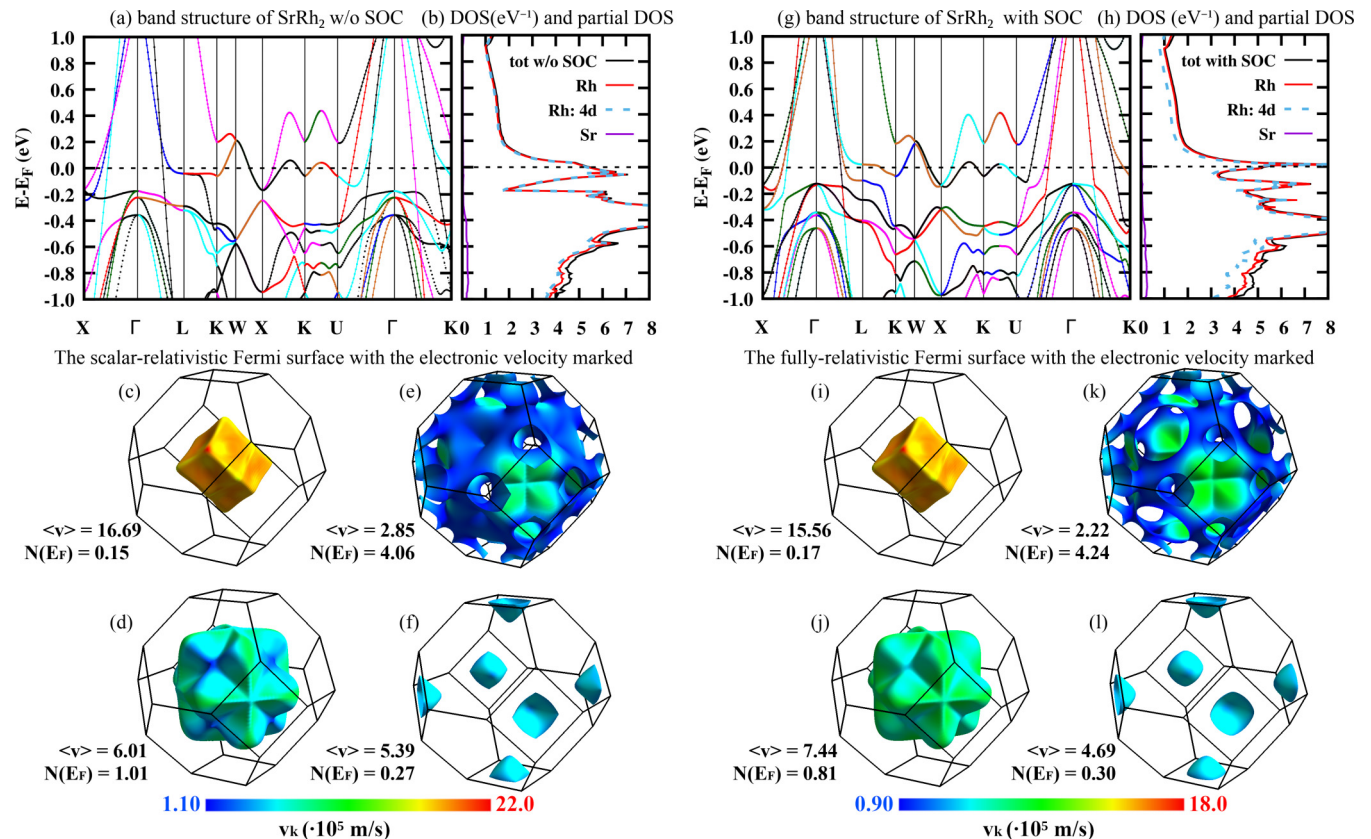


FIG. 8. The scalar-relativistic [(a)–(f)] and fully relativistic [(g)–(l)] electronic structure of SrRh₂ in terms of band structure (the points matched to each other with help of symmetry analysis are connected with colored lines), DOS with atomic contributions and Fermi surface colored with respect to velocity. Average Fermi velocity $\langle v \rangle$ (10^5 m/s) and density of states $N(E_F)$ (eV^{-1}) for each of the FS sheets are shown.

smaller energy range of about 6 eV. Two electrons occupy the lowest band, which here extends from -6 to -3.8 eV with respect to the Fermi level [Fig. 6(c)]. The remaining valence band block, accommodating 38 electrons, spans the relatively small energy range from -3.8 eV to E_F . This results in generally higher DOS values, when compared to Ir analog which has a larger bandwidth: $N(E_F) = 5.58$ eV⁻¹ in SrRh₂ versus 3.27 eV⁻¹ in SrIr₂ (see Table III). The scalar-relativistic band structure of SrRh₂ is very similar to that in SrIr₂ around the Fermi level, and only the DOS peak appears slightly below E_F , as seen in Fig. 8(a). More differences appear for the fully relativistic case. As rhodium is much lighter than iridium, the electronic properties of SrRh₂ are weakly affected by SOC, in contrast to the case of SrIr₂ discussed above. When SOC is included, the DOS peak becomes narrower but the Fermi level remains on the slope of the peak in both scalar- and fully relativistic case. The value of $N(E_F)$ is almost the same in both cases, 5.52 and 5.58 eV⁻¹ per f.u. respectively. As in the case of SrIr₂, the scalar-relativistic Fermi surface consists of four pieces, and this number remains also in the relativistic case, with FS hardly affected by SOC. The obtained value of $N(E_F)$ yields the electron-phonon coupling constant equal to $\lambda_\gamma = 1.08$ when computed as a renormalization factor of the Sommerfeld parameter (see Table III).

D. Relation to elemental Ir and Rh

Following the close relation of the crystal structures, we find similarities in the electronic structures of SrM₂ and elemental metallic $M = \text{Ir, Rh}$, which we present in Appendix, Fig. 17. There we may also distinguish the lowest, separated band and a characteristic spiky DOS structure. The occupied bands of Ir and Rh spread the wider energy range of 11.5 eV (Ir) and 8 eV (Rh), due to their closed-packed crystal structure and more metallic character. When we consider the zoom of DOS of SrM₂ shown in Figs. 7 and 8 and compare with the DOS of Ir and Rh shown in Fig. 17, the characteristic DOS peak near the Fermi level is present in all cases. In the elemental structures of Ir and Rh, E_F is below the peak, whereas in SrM₂ addition of Sr acts as an electron doping, pushing E_F into the peak and increasing the DOS per M atom, from 0.93 eV⁻¹ (1.42 eV⁻¹) for Ir (Rh) to 1.63 eV⁻¹ (2.79 eV⁻¹) for SrIr₂ (SrRh₂), see Table III. Even though the Fermi level is pushed, similarities in the shape of the Fermi surface may be also noted, especially when comparing SrRh₂ to Rh. Concluding, the band structures of SrM₂ near E_F have a lot in common with the elemental metallic M structures and Sr atom plays a role of an electron donor.

V. PHONONS AND ELECTRON-PHONON COUPLING

A. SrIr₂

The phonon dispersion relations and phonon DOS $F(\omega)$ of SrIr₂ are shown in Fig. 9. The phonon spectrum of SrIr₂ is not stable in the scalar-relativistic case, as in Fig. 9(a) we observe imaginary frequencies (here plotted as negative) around $\Gamma = (0, 0, 0)$ and $L = (0.5, 0.5, 0.5)$ \mathbf{q} points, associated with the three Ir optical modes. The structure is then stabilized when SOC is included [Fig. 9(d)]. The phonon spectrum spans the range from 0 to nearly 6 THz and is

TABLE IV. The phonon frequency moments of SrIr₂, SrRh₂, Ir and Rh, obtained with help of Eqs. (8)–(11).

| | $\langle \omega^1 \rangle$ | $\sqrt{\langle \omega^2 \rangle}$ | $\langle \omega \rangle$ | $\langle \omega_{\log} \rangle$ | $\langle \omega_{\log}^{\alpha^2 F} \rangle$ |
|----------------------------------|----------------------------|-----------------------------------|--------------------------|---------------------------------|--|
| SrIr ₂ w/o SOC (THz) | | | | | |
| unstable (imaginary frequencies) | | | | | |
| SrIr ₂ with SOC (THz) | | | | | |
| total | 2.88 | 3.12 | 3.38 | 2.62 | 2.02 |
| Sr | 3.78 | 4.00 | 4.22 | 3.47 | |
| Ir | 2.57 | 2.76 | 2.96 | 2.38 | |
| SrRh ₂ w/o SOC (THz) | | | | | |
| total | 2.98 | 3.21 | 3.44 | 2.74 | 2.24 |
| SrRh ₂ with SOC (THz) | | | | | |
| total | 3.08 | 3.29 | 3.51 | 2.85 | 2.52 |
| Sr | 3.28 | 3.50 | 3.74 | 3.00 | |
| Rh | 3.00 | 3.19 | 3.40 | 2.78 | |
| Ir with SOC (THz) | | | | | |
| total | 4.36 | 4.5 | 4.65 | 4.17 | 4.61 |
| Rh with SOC (THz) | | | | | |
| total | 4.83 | 5.0 | 5.17 | 4.61 | 5.04 |

composed of 18 modes (there are six atoms in the primitive cell). The lower- and higher-frequency parts are separated by a pseudo-gap, formed around 3.4 THz in the phonon density of states in Fig. 9(f). Modes below 3.4 THz originate mostly from Ir, while those between 3.4 and 5.5 THz are related mostly to Sr vibrations, reflecting the differences in their atomic masses ($M_{\text{Ir}} = 192.2$ u, $M_{\text{Sr}} = 87.6$ u). In contrast, the highest-frequency optical mode, which extends from 4.5 THz to 6 THz, again involves the vibrations of the heavier Ir. This characteristic “bell-shaped” mode, as we discuss below, is also present in the elemental fcc Ir, and its observation guided us to take a closer look at the similarities between SrIr₂ and Ir.

To characterize the phonon spectrum, several phonon frequency moments are calculated using the following formulas:

$$\langle \omega^n \rangle = \int_0^{\omega_{\max}} \omega^{n-1} F(\omega) d\omega \Big/ \int_0^{\omega_{\max}} F(\omega) \frac{d\omega}{\omega}, \quad (8)$$

$$\langle \omega \rangle = \int_0^{\omega_{\max}} \omega F(\omega) d\omega \Big/ \int_0^{\omega_{\max}} F(\omega) d\omega, \quad (9)$$

$$\langle \omega_{\log} \rangle = \exp \left(\int_0^{\omega_{\max}} F(\omega) \ln \omega \frac{d\omega}{\omega} \Big/ \int_0^{\omega_{\max}} F(\omega) \frac{d\omega}{\omega} \right), \quad (10)$$

and

$$\langle \omega_{\log}^{\alpha^2 F} \rangle = \exp \left(\int_0^{\omega_{\max}} \alpha^2 F(\omega) \ln \omega \frac{d\omega}{\omega} \Big/ \int_0^{\omega_{\max}} \alpha^2 F(\omega) \frac{d\omega}{\omega} \right). \quad (11)$$

Results are shown in Table IV. The global average phonon frequency is 3.38 THz, whereas the partial for Ir and Sr is 2.96 and 4.22 THz, respectively.

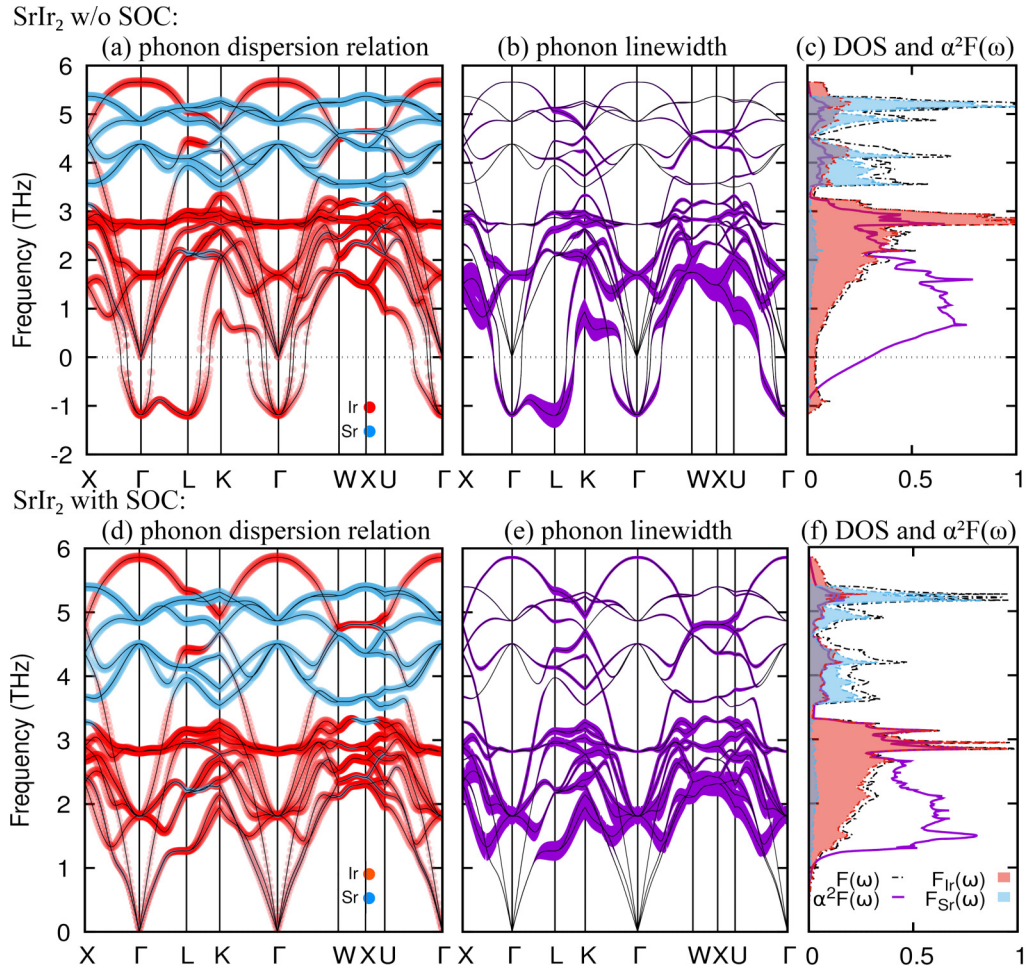


FIG. 9. The phonon structure and EPC of SrIr_2 determined [(a)–(c)] without SOC and [(d)–(f)] with SOC; [(a) and (c)] Phonon dispersion relations with contributions from Sr (in blue) and Ir (in red); [(b) and (e)] phonon dispersion relations with band shading proportional to the phonon linewidths ($\gamma_{\mathbf{q}\nu}$ in THz multiplied by 4); [(c) and (f)] total and partial phonon DOS, $F(\omega)$, and Eliashberg function, $\alpha^2F(\omega)$. To conveniently visualize both $F(\omega)$ (which originally is expressed in units of THz^{-1} and has a norm of $3N_{at}$, where N_{at} - number of atoms in the primitive cell) and $\alpha^2F(\omega)$ (which is dimensionless) in one panel, the former was renormalized as $\alpha^2F(\omega)$.

The electron-phonon coupling matrix elements $g_{\mathbf{q}\nu}(\mathbf{k}, i, j)$ are next calculated as [35–37]

$$g_{\mathbf{q}\nu}(\mathbf{k}, i, j) = \sum_s \sqrt{\frac{\hbar}{2M_s\omega_{\mathbf{q}\nu}}} \langle \psi_{i,\mathbf{k}+\mathbf{q}} | \frac{dV_{\text{SCF}}}{d\hat{u}_{\nu s}} \cdot \hat{\epsilon}_{\nu s} | \psi_{j,\mathbf{k}} \rangle, \quad (12)$$

where i, j are band indexes, M_s is a mass of atom s , $\frac{dV_{\text{SCF}}}{d\hat{u}_{\nu s}}$ is a change of electronic potential calculated in self-consistent cycle due to the movement of an atom s , $\hat{\epsilon}_{\nu s}$ is a polarization vector associated with ν th phonon mode $\hat{u}_{\nu s}$ and $\psi_{i,\mathbf{k}}$ is the electronic wave function. On this basis the phonon linewidths $\gamma_{\mathbf{q}\nu}$ are calculated by summing $g_{\mathbf{q}\nu}(\mathbf{k}, i, j)$ over all the electronic states on the Fermi surface, which may interact with the given phonon $\{\mathbf{q}\nu\}$ [33,35,37]:

$$\gamma_{\mathbf{q}\nu} = 2\pi\omega_{\mathbf{q}\nu} \sum_{ij} \int \frac{d^3k}{\Omega_{\text{BZ}}} |g_{\mathbf{q}\nu}(\mathbf{k}, i, j)|^2 \times \delta(E_{\mathbf{k},i} - E_F) \delta(E_{\mathbf{k}+\mathbf{q},j} - E_F). \quad (13)$$

Phonon linewidths are visualized in Figs. 9(b) and 9(e). As we can see, the strongest electron-phonon interactions (largest $\gamma_{\mathbf{q}\nu}$) are observed for the lowest acoustic and lowest optical Ir

modes, which we discuss in more detail in the next section. None of the Sr-dominated modes show large $\gamma_{\mathbf{q}\nu}$.

In the next step, the Eliashberg function $\alpha^2F(\omega)$ is calculated as a sum of $\gamma_{\mathbf{q}\nu}$ over all phonon modes, weighted by the inverse of their frequency [33,35,37]:

$$\alpha^2F(\omega) = \frac{1}{2\pi N(E_F)} \sum_{\mathbf{q}\nu} \delta(\omega - \omega_{\mathbf{q}\nu}) \frac{\gamma_{\mathbf{q}\nu}}{\hbar\omega_{\mathbf{q}\nu}}. \quad (14)$$

Eliashberg function $\alpha^2F(\omega)$ is plotted together with the phonon DOS $F(\omega)$ in Figs. 9(c) and 9(f). Due to the large $\gamma_{\mathbf{q}\nu}$ and low frequencies, in Fig. 9(f) the largest $\alpha^2F(\omega)$, much enhanced above $F(\omega)$, is seen in the Ir-dominated part from 0 to 2.8 THz. At higher frequencies $\alpha^2F(\omega)$ follows the shape of the partial Ir DOS function $F_{Ir}(\omega)$ as in the case of crystalline Ir, discussed below.

Finally, the EPC constant λ is calculated as the integral of the Eliashberg function divided by frequency [33],

$$\lambda = 2 \int_0^{\omega_{\text{max}}} \frac{\alpha^2F(\omega)}{\omega} d\omega. \quad (15)$$

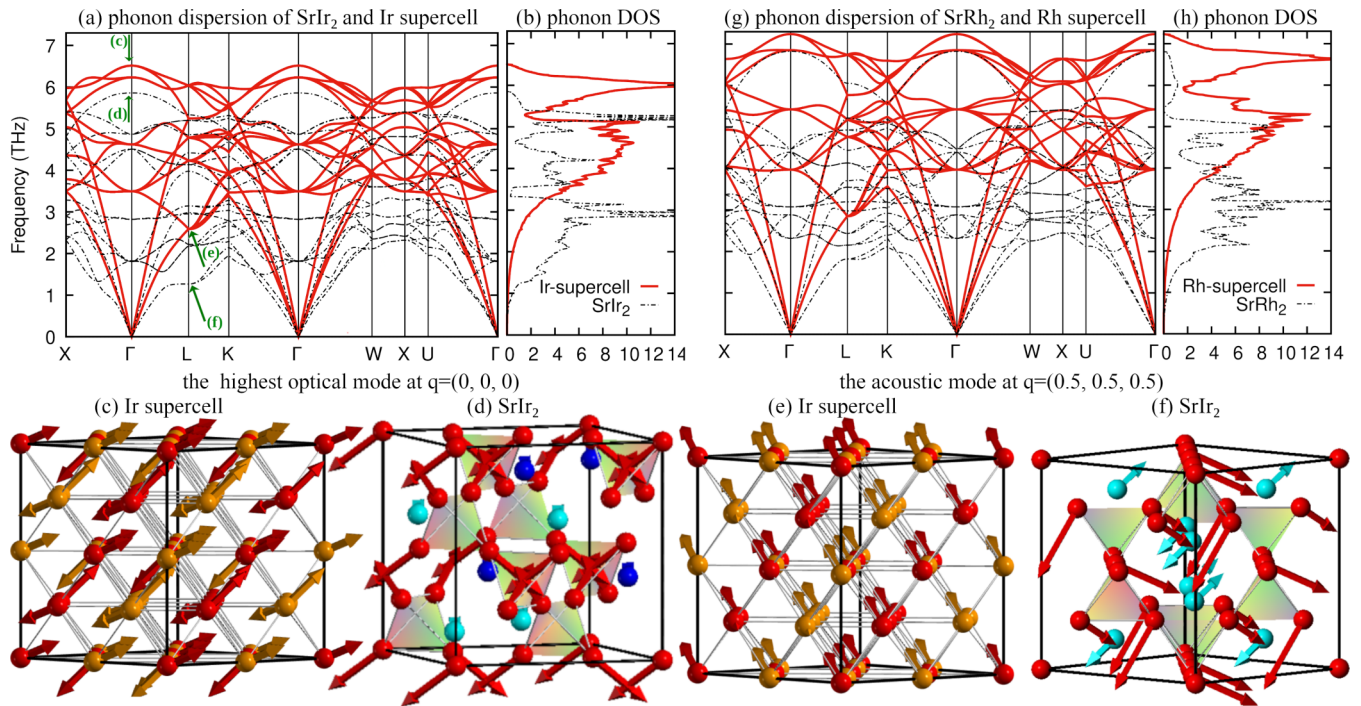


FIG. 10. The phonon dispersion relation and DOS [(a) and (b)] of both fcc Ir $2 \times 2 \times 2$ supercell and SrIr₂. Additionally the phonon modes at $\Gamma = (0, 0, 0)$ and $L = (0.5, 0.5, 0.5)$, marked in (a) with green arrows, are shown in real space in supercell of Ir [(c) and (e)] and in unit cell of SrIr₂ [(d) and (f)] with tetrahedra of atoms marked. The phonon dispersion relation and phonon DOS of Rh supercell and of SrRh₂ are shown in (g)–(h).

The obtained $\lambda = 1.09$ indicates that the electron-phonon coupling is strong in this compound, and is in very good agreement with the value of 1.17, calculated from experimental T_c with help of the Allen-Dynes equation, alike with $\lambda_\gamma = 1.01$, extracted from renormalization of the Sommerfeld coefficient. These values are presented in Tables III and V.

B. Phonon engineering

As we presented in Fig. 1, the structure of SrIr₂ is formed as a $2 \times 2 \times 2$ supercell of Ir in which half of the Ir tetrahedrons are replaced by Sr atoms. It is then intriguing to see how this process modifies the lattice dynamics of Ir, transforming

TABLE V. Superconducting properties of SrIr₂, SrRh₂, Ir, and Rh, in terms of the EPC constant λ and critical temperature T_c determined theoretically [Eqs. (4) and (15)] and experimentally. In each case $\mu^* = 0.13$ was assumed. For the Laves phases the experimental value of λ is calculated from the measured T_c using Eq. (4) and $\langle \omega_{\log}^2 \rangle(\omega)$ from Eq. (3). For Ir and Rh λ was determined in Ref. [17] based on McMillan’s Eq. (2) and much lower T_c of Rh is due to presence of spin fluctuations with $\lambda_{sf} \sim 0.1$.

| | calculated | | experimental | |
|---------------------------|------------|-----------|--------------|----------------------|
| | λ | T_c (K) | λ | T_c (K) |
| SrIr ₂ w/o SOC | unstable | | | |
| SrIr ₂ w. SOC | 1.09 | 6.88 | 1.17 | 6.07 |
| SrRh ₂ w/o SOC | 1.12 | 8.00 | | |
| SrRh ₂ w. SOC | 0.90 | 5.93 | 0.93 | 5.41 |
| Ir w. SOC | 0.36 | 0.17 | 0.34 | 0.14 |
| Rh w. SOC | 0.36 | 0.19 | 0.34 | 0.3×10^{-3} |

the poorly superconducting material ($T_c = 0.14$ K) into the strongly coupled superconductor.

To do this, we have calculated the phonon structure and electron-phonon coupling in elemental fcc Ir (as well as Rh, discussed later). Phonon dispersion relations with the phonon linewidths, DOS, and Eliashberg function for Ir are shown in Fig. 18 in Appendix. However, as the direct comparison of phonon dispersion relations between the monoatomic Ir and multiaatomic SrIr₂ would be impossible, we have additionally recalculated the phonon dispersion curves for the Ir $2 \times 2 \times 2$ supercell, which now may be plotted together with those of SrIr₂ in Fig. 10.² The electron-phonon couplings of the two structures are compared in Fig. 11. The phonon structure of elemental Ir consists of three acoustic modes in the frequency range from 0 to about 6.5 THz, i.e., nearly the same range as the whole spectrum of SrIr₂. When the phonon dispersion curves of Ir are folded into the Brillouin zone (BZ) of the supercell in Fig. 10, we see that in the higher frequency range ($\omega > 4$ THz) several phonon branches are recreated in SrIr₂ after the Ir₄ \rightarrow Sr substitution. Due to the reduced population of atoms, the number of phonon branches is smaller in the Laves phase, but their dispersions are similar to those in Ir, with the frequencies modified up to $\sim 10\%$. This includes the

²Note that phonon dispersion relations of Ir and Rh in Figs. 10 and 11 are shown in the Brillouin zones of eight-atom $2 \times 2 \times 2$ supercells formed from primitive cell, whereas the phonon modes are visualized in the conventional cubic $2 \times 2 \times 2$ supercells, containing 32 atoms. For the relation between those two representations see Fig. S2 in Ref. [15].

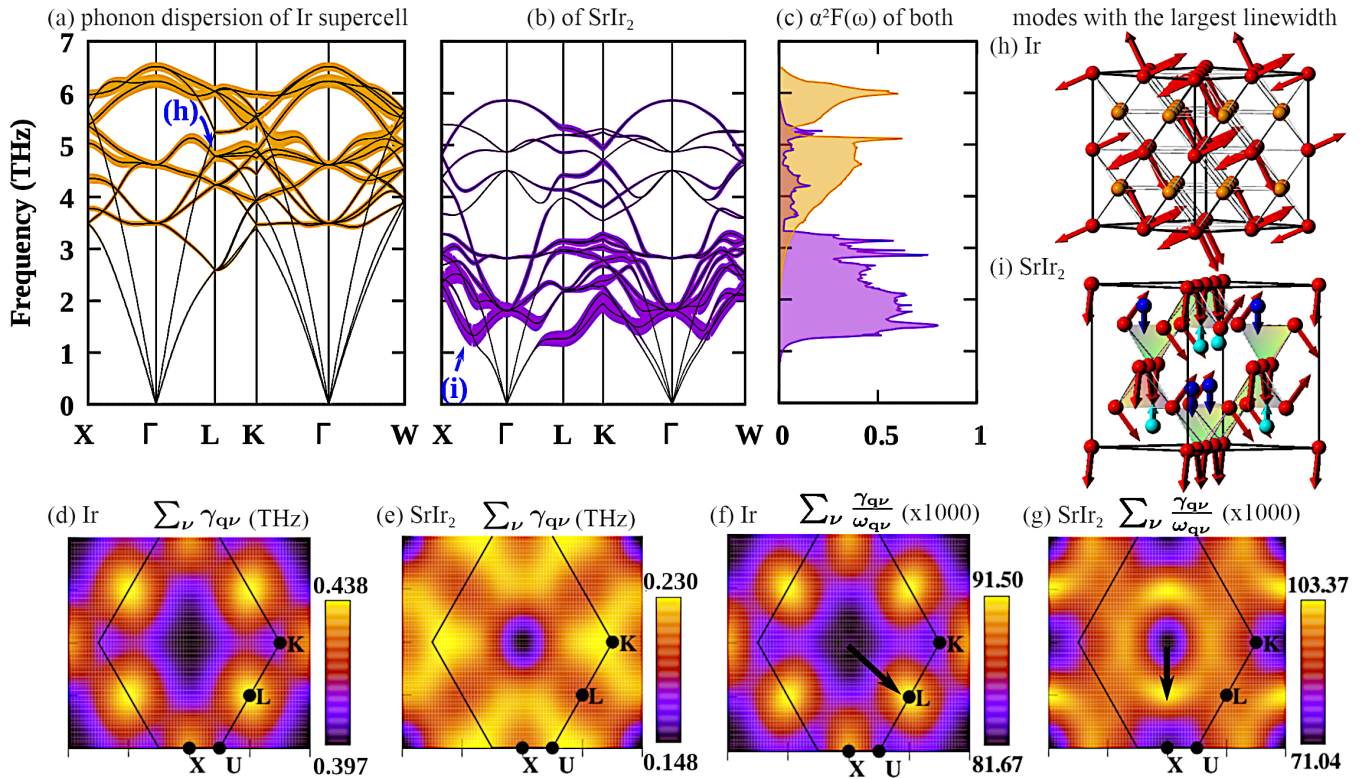


FIG. 11. The connection of phonon linewidths with real-space vibrations of atoms. Phonon dispersions with shading proportional to the phonon linewidths (γ_{qv} in THz multiplied by 4) in (a) $2 \times 2 \times 2$ supercell of Ir; (b) and SrIr₂; (c) Eliashberg function of both crystals. (d) and (e) show maps in $(1, \bar{1}, 0)$ plane of BZ of phonon linewidth summed over modes $\sum_{\nu} \gamma_{qv}$ of Ir and SrIr₂, respectively, while (f) and (g) show maps of $\sum_{\nu} \frac{\gamma_{qv}}{\omega_{qv}}$; (h) and (i) show visualization of modes with the largest linewidths: (h) mode at $\mathbf{q} = (0.5, 0.5, 0.5)$ of crystalline Ir; and (i) mode at $\mathbf{q} = (0.5, 0.0, 0.0)$ of SrIr₂. Both are marked in phonon dispersion relations (a) and (b).

highest “bell-shaped” mode with the maximum frequency at Γ point. In the case of SrIr₂ [see Fig. 10(d)] this mode is related to the displacements of Ir atoms towards the center of the closed-packed Ir tetrahedron, which explains its high frequency. Similar mode was observed in CaPd₂ Laves phase in Ref. [38], where it was discussed in the context of a large chemical pressure induced by such atomic vibrations. Strong deformations of the close-packed Ir tetrahedron are associated with the highest-frequency modes in the Ir structure, one of which is visualized in Fig. 10(c) and the others in Fig. S3 in Ref. [15].

In the lower frequency range, on the other hand, the phonon dispersion curves in SrIr₂ are completely changed as they have about 50% lowered frequencies when compared to the crystalline Ir. This effect is directly related to reduction of the number of Ir-Ir neighbors and a much less-packed crystal structure around the substituted Sr atoms. More space around the Ir tetrahedrons locally reduces the internal chemical pressure connected to atomic vibrations. For example, we can compare the two lowest acoustic modes at L point, indicated by arrows in Fig. 10(a) and visualized in real space in Figs. 10(e) and 10(f). In the Ir supercell, this mode is associated with vibrations along the $[2, 1, 1]$ direction, in which every second atom in the Ir chains vibrate perpendicular to the chain. Such a mode is less energetic than that involving larger tetrahedron deformation, but still due to 12-fold coordination of Ir atoms, the forces acting on the displaced atoms inside such chains are strong, resulting in the frequency of 2.6 THz

at L . In SrIr₂, on the other hand [Fig. 10(f)], in the lowest mode at L -point Ir atoms vibrate towards the empty space with a low charge density, formed when Ir₄ tetrahedron was substituted by Sr. This does not involve such large energy, thus the frequency is reduced to 1.3 THz. Moreover, in the Laves phase each Ir has only six nearest Ir neighbors, thus even though the individual Ir-Ir bond strength is similar in both cases of metallic iridium and the Laves phase, the restoring force acting on atoms in the case of a simple displacement of a single atom is much reduced. This is shown in Fig. 12. Single Ir atom is displaced and the restoring force in SrIr₂ is about two times smaller than in crystalline Ir (the force in Ir was taken as unity). Importantly, the forces acting on the nearest Ir neighbors are similar in both cases, confirming the same bond strength between Ir atoms which form tetrahedrons, while the Ir-Sr bonding occurs to be weaker.

As a consequence of the reduced coordination and density of atom packing, the average phonon frequency of Ir in SrIr₂ is lowered compared to metallic Ir (3.38 versus 4.65 THz, see Table IV). Thus the replacement of half of Ir tetrahedrons with Sr atoms is the key factor determining the phonon structure of SrIr₂.

Modifications of the phonon spectrum lead to strong changes in the electron-phonon interactions. The Eliashberg function of Ir closely follows its phonon DOS [see Fig. 18(b)], nearly satisfying the relation $\alpha^2 F(\omega) \simeq \text{const} \times F(\omega)$. In the Laves phase, such behavior is observed only in the high-frequency part, whereas at lower ω the electron-phonon

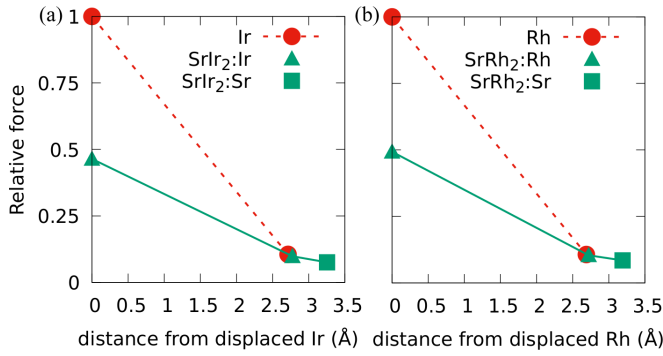


FIG. 12. (a) The forces acting on the nearest atoms in the unit cell when Ir is displaced, normalized to the force in elemental metallic Ir. The restoring force, acting on the displaced atom, is about two times smaller in SrIr₂, compared to Ir, whereas the force acting on neighbors (marked on the x axis according to their distance from the displaced atom) is comparable. (b) The same for fcc Rh and SrRh₂ when Rh is displaced.

interaction is more frequency-dependent with $\alpha^2 F(\omega)$ strongly enhanced above $F(\omega)$ (see Fig. 9). This difference is clearly visible in Fig. 11, where the Eliashberg functions are compared. As $\alpha^2 F(\omega)$ depends on the ratio $\frac{\gamma_{qv}}{\omega_{qv}}$, the significant decrease in phonon frequencies of Ir in SrIr₂ may enhance the EPC under the assumption that the phonon linewidths, which are essentially an electronic contribution to the electron-phonon coupling, are not much affected. Phonon linewidths marked as shading in the phonon dispersion relation [panels (a) and (b)] as well as summed over all modes [(d) and (e)] show, that the phonon linewidths are generally larger in the case of crystalline Ir [compare the scale of panels (d) and (e)]. Here, all optical modes of Ir have large γ_{qv} , whereas in the case of SrIr₂ only low frequency modes count.

To compare more global values and analyze how the electronic contribution changes upon Sr insertion to the structure, we calculate the first moment of the Eliashberg function as the integral I , which is proportional to the sum of phonon linewidths over both \mathbf{q} and ω :³

$$I = \int_0^{\omega_{\max}} \omega \cdot \alpha^2 F(\omega) d\omega. \quad (16)$$

I is the quantity which does not depend on phonon frequency, as

$$\begin{aligned} I &= \frac{1}{2\pi \hbar N(E_F)} \int_0^{\omega_{\max}} d\omega \sum_{\mathbf{qv}} \delta(\omega - \omega_{\mathbf{qv}}) \gamma_{\mathbf{qv}} \\ &= \frac{1}{2\pi \hbar N(E_F)} \int_0^{\omega_{\max}} d\omega \sum_{\mathbf{qv}} \delta(\omega - \omega_{\mathbf{qv}}) \sum_s \frac{1}{2M_s} \\ &\quad \times \int \frac{d^3k}{\Omega_{BZ}} \left| \langle \psi_{i,\mathbf{k}+\mathbf{q}} | \frac{dV_{\text{SCF}}}{d\hat{u}_{vs}} \cdot \hat{\epsilon}_{vs} | \psi_{j,\mathbf{k}} \rangle \right|^2 \end{aligned}$$

³This integral is closely related to the so-called McMillan-Hopfield parameter η [28,33], which for a monoatomic system is defined as $\eta = 2MI$, with M being the atomic mass and I defined as in Eq. (16). EPC constant is then represented using the well-known formula $\lambda = \eta/M(\omega^2)$, where (ω^2) in a system where EPC is frequency-independent may be calculated using Eq. (8) with $n = 2$.

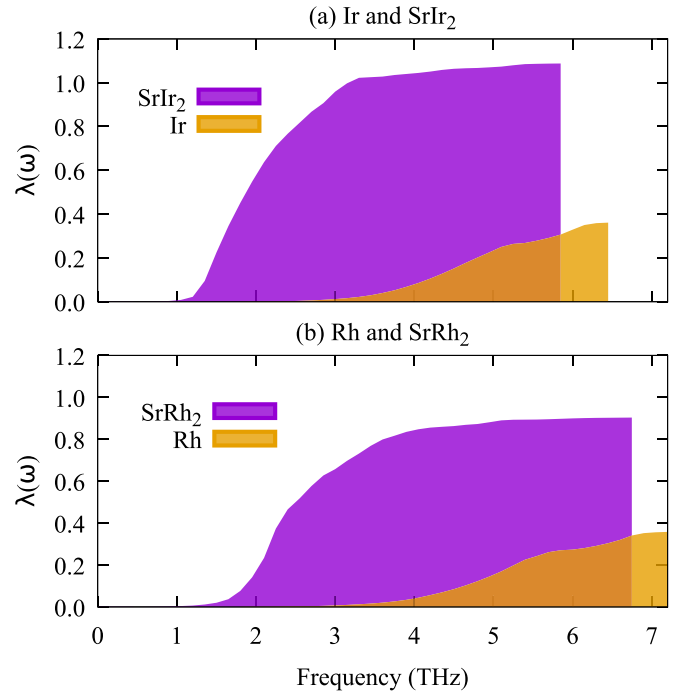


FIG. 13. $\lambda(\omega) = \int_0^{\omega_{\max}} \frac{2}{\omega'} \alpha^2 F(\omega') d\omega'$: the cumulative frequency distribution of the EPC constant of (a) Ir and SrIr₂; and (b) Rh and SrRh₂.

$$\times \delta(E_{\mathbf{k},i} - E_F) \delta(E_{\mathbf{k}+\mathbf{q},j} - E_F). \quad (17)$$

Results are shown in Table VI.

As I , being the electronic part of EPC, measures how the electronic density responds to the atomic vibrations, it is not surprising that the overall I is larger in closed packed metallic Ir than in SrIr₂ (4.14 and 2.84 THz², respectively), where a part of the dense-packed Ir structure is substituted by Sr.

The effect on phonon frequencies, however, outweighs the reduction in the electronic part, as the Eliashberg function depends on the ratio $\frac{\gamma_{qv}}{\omega_{qv}}$. This quantity, as the \mathbf{q} -dependent contribution to Eliashberg function, is visualized in Figs. 11(f) and 11(g), and is larger in the case of SrIr₂ than Ir. In the case of SrIr₂ the large contribution comes from $\mathbf{q} \simeq (0.5, 0, 0)$ (halfway between Γ and X). From Fig. 11(b), we see that it is associated with the softened lowest optical mode, in which Ir atoms move toward the empty space around Sr, exactly like the previously shown acoustic mode at L point, which also had a large phonon linewidth.

The lowering of phonon frequencies has an even stronger effect on EPC constant, as $\lambda \propto \frac{\gamma_{qv}}{\omega_{qv}^2}$. In metallic Ir, calculated $\lambda = 0.36$, and is mostly contributed by high-frequency phonons, as shown in Fig. 13. On the other hand, the three-times larger EPC constant of SrIr₂, $\lambda = 1.09$, is contributed in 94% by the phonon modes below the pseudogap at 3.40 THz,

TABLE VI. The electronic part of EPC calculated as an integral I defined in Eq. (16) (expressed in THz²).

| | SrIr ₂ | Ir | SrRh ₂ | Rh |
|------------|-------------------|------|-------------------|------|
| I w. SOC | 2.84 | 4.14 | 3.46 | 4.97 |

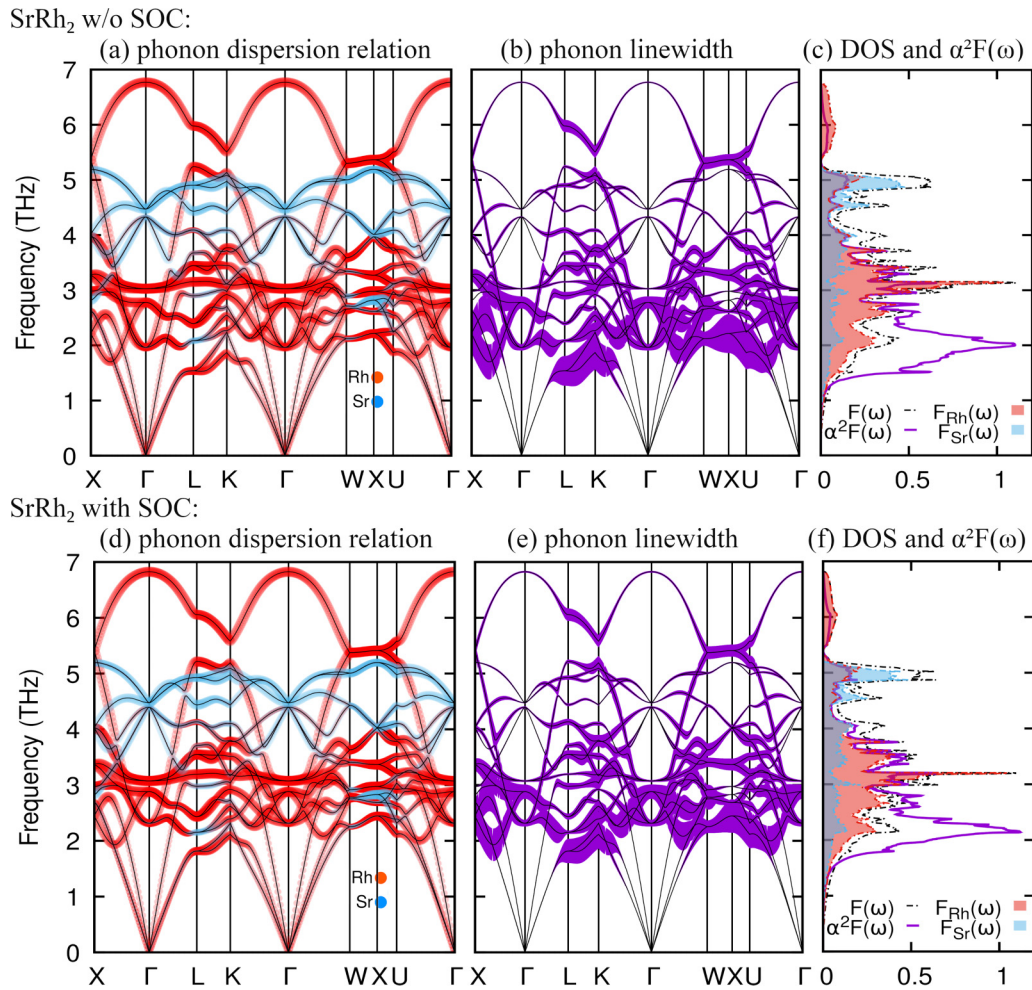


FIG. 14. The phonon structure and EPC of SrRh_2 determined [(a)–(c)] without SOC; [(d)–(f)] with SOC; in terms of [(a) and (d)] phonon dispersion relation with Sr and Rh contribution marked with blue and red, respectively; [(b) and (e)] with band shading proportional to the phonon linewidths (γ_{qv} in THz multiplied by 4); [(c) and (f)] Eliashberg function and phonon DOS (total and partial); the latter one is normalized as $\alpha^2F(\omega)$.

i.e., as in metallic Ir is provided by the network of Ir tetrahedrons, but with much reduced phonon frequencies.

In summary, the substitution of Ir tetrahedrons by lighter Sr atoms lowers the phonon frequencies of Ir. That is realized through the less dense atom packing and reduction of the number of nearest neighbors, and turns out to efficiently tune the phonon spectrum to realize the strongly coupled superconducting state.

C. SrRh_2

Similar characteristic of the phonon spectrum and the electron-phonon coupling is found for SrRh_2 . In contrast to SrIr_2 , the phonon spectrum of SrRh_2 , presented in Fig. 14, is stable in both scalar- and fully relativistic cases, showing the lesser importance of SOC for the dynamic properties of this compound, due to the lower atomic number of Rh. As Rh is much lighter than Ir ($m_{\text{Rh}} = 102.91$ u and $m_{\text{Ir}} = 192.22$ u), the phonon frequencies generally increase: the average $\langle\omega\rangle$, shown in Table IV, increases to 3.51 THz. Due to the similar masses of Rh and Sr, we do not observe a pseudogap separating the phonon DOS spectrum into two parts. However, as

far as the atomic character of the phonon modes is concerned, a similar structure as in the previous case is observed. The low-frequency part, up to ~ 4 THz, is dominated by Rh with some contribution from Sr, which then dominates between 4 and 5 THz. The characteristic highest bell-shaped optical mode shows up between 5.2 to 6.8 THz. Here it is more separated from the rest of the spectrum and it is also connected to the vibrations of Rh towards the center of the closed-packed Rh tetrahedrons, just like in the analogical mode in SrIr_2 .

The phonon linewidths have a slightly larger magnitude than in the Ir analog, with the largest associated with the acoustic and the lowest optical modes, as shown in Fig. 14(e). This is reflected in the value of the electronic part of EPC, calculated with Eq. (16), as $I = 3.46$ THz² is larger than for SrIr_2 (see Table VI). Modes with large γ_{qv} are concentrated near 2 THz, which produces the peak in the Eliashberg function in Fig. 14(f). The EPC constant, calculated using Eq. (15), is equal to $\lambda = 0.90$, lower than for $M = \text{Ir}$ in spite of the larger phonon linewidths. The reason for this is an increase in the phonon frequencies, and $\lambda(\omega)$ distribution is shifted to higher frequencies, as can be seen in Fig. 13. Now, comparing with

the values estimated from the experimental measurements, the theoretical result is slightly underestimated with respect to the values of $\lambda = 0.93$, determined from T_c , and $\lambda = 1.08$, calculated from the renormalized Sommerfeld parameter. All these values indicate slightly weaker electron-phonon coupling than in SrIr₂.

The “phonon engineering” effect between Rh and SrRh₂ is the same as discussed for SrIr₂. Phonon spectrum of the metallic Rh is shown in Appendix in Fig. 18, and due to the smaller mass of Rh it is shifted towards higher frequencies when compared to Ir (above 7 THz, in agreement with the experimental data [39]), with the calculated EPC constant $\lambda = 0.36$. The effect of replacement of half of Rh₄ tetrahedrons in the Rh 2×2×2 fcc supercell with Sr atoms on the phonon dispersion curves is shown in Fig. 10. In the same way as in SrIr₂, one of the highest Rh phonon modes is recreated in SrRh₂ as involving the Rh vibrations towards the center of the remaining Rh tetrahedrons, whereas in the low-frequency part the phonon frequencies are strongly lowered. The average Rh frequency is much reduced, from 5.17 THz in crystalline Rh to 3.40 in SrRh₂, see Table IV. As the crystal locally loses the dense-packed structure, the restoring force acting on a displaced Rh in SrRh₂ is lowered (Fig. 12) with respect to metallic Rh, while the bond strength between a pair of Rh atoms remains the same. Finally, in the context of the electron-phonon coupling, the strong lowering of the phonon frequencies takes over the effect of a moderate reduction in the electronic part of EPC (as shown by the decrease in I , see Table VI) leading to strong electron-phonon coupling.

D. Effect on the lattice specific heat

Such a strong effect on the phonon spectrum should be visible in the temperature dependence of the heat capacity. To confront the results of theoretical phonon calculations with experiment, the constant volume lattice specific heat is calculated as [33]

$$C_V = R \int_0^\infty F(\omega) \left(\frac{\hbar\omega}{k_B T} \right)^2 \frac{\exp\left(\frac{\hbar\omega}{k_B T}\right)}{\left(\exp\left(\frac{\hbar\omega}{k_B T}\right) - 1\right)^2} d\omega. \quad (18)$$

The phonon density of states $F(\omega)$ functions, shown in Figs. 9 and 14 for SrM₂ and in Fig. 18 for M, M = Ir and Rh, were used to obtain the theoretical C_V which are plotted in Fig. 15. The experimental C_p data (this work for the Laves phases and Ref. [34] for Ir and Rh) are added for comparison. At first, we see a relatively good agreement between the calculated and experimental results for all presented structures. The largest disagreement is seen for SrRh₂ on the $C_V/T(T^2)$ plot around the temperature of 60 K, where the calculated C_V is about 8% larger than the experimental C_p . This suggests that the calculated phonon spectrum is slightly too soft. Nevertheless, both the computed and experimental results confirm our observation of the phonon engineering effect, which is the transfer of phononic states from higher to lower frequencies, resulting from the structural effect of removing part of the Ir and Rh tetrahedrons while forming the Laves phases. Due to the downward shift of phonon branches, the population of lower-energy phonons, which may be excited at lower tem-

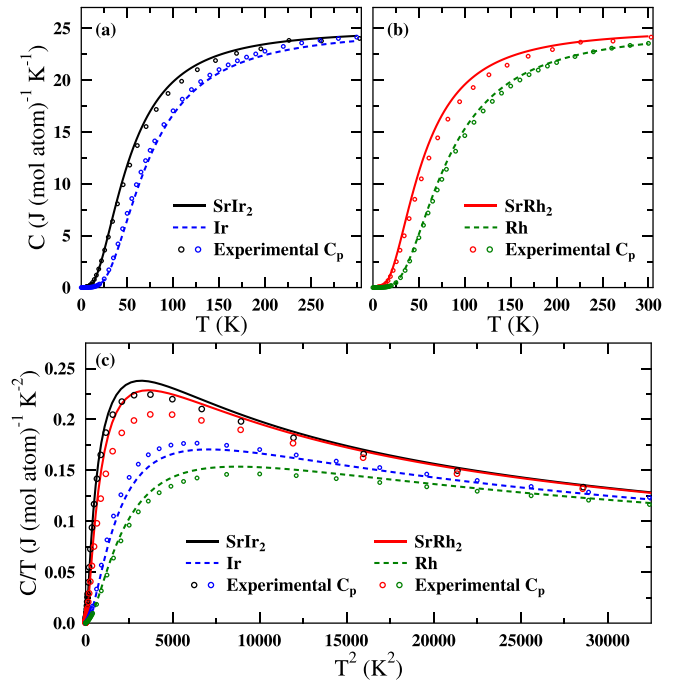


FIG. 15. Comparison of the lattice specific heat of SrM₂ and M, M = Ir and Rh. Lines are the calculated C_V , whereas points are C_p taken from our measurements for the Laves phases and Ref. [34] for Ir and Rh. The electronic specific heat γT was subtracted from the experimental C_p . The transfer of phonons to the lower frequencies is confirmed by a much larger specific heat at lower temperatures. The molar C_V is plotted per atom, to allow for a comparison between the Laves phases and pure metals.

peratures, is increased. As a result, the crystal lattice in SrM₂ may absorb larger amounts of thermal energy at lower temperatures, compared to metallic Ir and Rh. This is confirmed by the increase in C_V/T at lower T in Fig. 15(c) as well as the shift of $C_V(T)$ curve to the left in Figs. 15(a) and 15(b).

VI. SUPERCONDUCTIVITY

The critical temperatures of the studied compounds are now calculated using the Allen-Dynes formula, Eq. (4), and presented in Table V. The Coulomb pseudopotential parameter $\mu^* = 0.13$ is assumed for all considered compounds, as it is typically used for materials with majority of d states near the Fermi level.

For SrIr₂, the logarithmic average frequency is equal to 2.02 THz (97 K), slightly higher than the value of 79 K deduced from the experimental results using the approximate Eq. (3). With the EPC constant $\lambda = 1.09$ it gives the critical temperature $T_c = 6.68$ K, again slightly higher than the experimental value of 6.07 K, which could be reproduced by taking a larger $\mu^* = 0.15$. Nevertheless, the agreement between theory and measurement is very good, and the critical temperature of SrIr₂ is dozens of times higher than that of Ir, which is 0.17 K from our calculations and 0.14 K from experiment. As in both cases the superconductivity is driven by the network of Ir tetrahedrons, this shows the efficiency of the described phonon engineering mechanism to boost the

electron-phonon coupling constant in order to achieve superconductivity with a relatively high critical temperature as for conventional systems. The effect of lowering of the phonon frequencies of Ir reduces the logarithmic average phonon frequency (4.61 THz in metallic Ir versus 2.02 in SrIr₂), which is disadvantageous in terms of T_c , but the effect of increase in λ (from 0.36 to 1.09) compensates for this with an allowance.

In SrRh₂ we see an analogous situation, the logarithmic average frequency is 2.52 THz (121 K) and with the EPC constant $\lambda = 0.90$ the calculated critical temperature is $T_c = 5.93$ K, a bit above the experimental one (5.41 K). These values are much enhanced over the calculated in metallic Rh ($\lambda = 0.36$, $T_c = 0.19$ K), which are similar to those obtained in Ir. However, here the increase in T_c from that measured for metallic Rh is even larger, as samples of Rh are almost nonsuperconducting ($T_c = 0.3$ mK). The reason for the discrepancy of T_c in Rh and such a low experimental critical temperature in rhodium was discussed in Ref. [17] and is due to the presence of spin fluctuations ($\lambda_{sf} \sim 0.1$), revealed also by susceptibility measurements [40]. Spin fluctuations compete with superconductivity, effectively lowering the pairing parameter and enhancing the Coulomb repulsion parameter μ^* . This significantly lowers T_c of Rh below the value in Ir, in spite of the similar EPC constants λ . Such effect is not seen in the SrRh₂ case.

It is worth to comment here on the spin-orbit coupling effect on the superconductivity in the studied Laves phases. As for the SrIr₂ the phonon structure was unstable in the scalar-relativistic case, we can only comment it for SrRh₂. There, the scalar-relativistic values of the logarithmic average frequency and EPC constant are $\langle \omega_{\log}^{\alpha^2 F} \rangle = 2.24$ THz and $\lambda = 1.12$, respectively. The resulting critical temperature is 8.00 K, larger than in the fully relativistic case due to the larger λ . Thus, the spin-orbit coupling is not beneficial for superconductivity in this case. Similar situation was previously found in CaIr₂ and CaRh₂ Laves phases [41] as well as in CaBi₂ [42], which is a distorted Laves phase.

VII. VALIDATION OF THE COMPUTED ELIASHBERG FUNCTIONS

The measured temperature dependence of the specific heat, discussed at the beginning of this work in Fig. 3, allows us to more precisely validate the accuracy of the computed Eliashberg functions than by comparing single parameters, like λ and T_c . By using the Eliashberg gap equations (for more details see Refs. [15,43–46]) the temperature dependence of the electronic specific heat in the superconducting state, as well as the specific heat jump at the transition temperature may be calculated from the $\alpha^2 F(\omega)$ functions with just one external parameter, the Coulomb pseudopotential. For such calculations, the “computational” value of μ_c^* is determined in a first step to obtain the superconducting critical temperature equal to the experimental one and then thermodynamic quantities are computed as a function of T/T_c . The μ_c^* obtained from Eliashberg equations is usually different (larger) than the value of μ^* which reproduces experimental T_c in the Allen-Dynes formula [43,47–49], that’s why we have

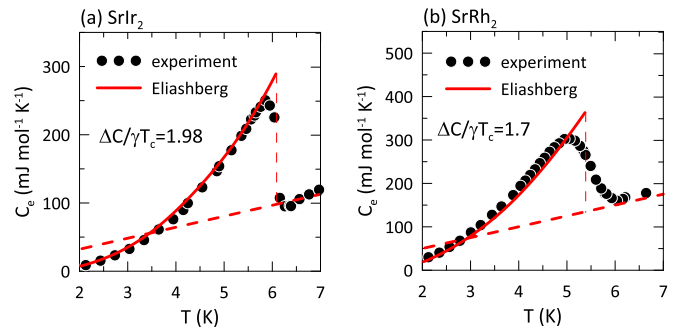


FIG. 16. Calculated and experimental electronic specific heat in (a) SrIr₂ and (b) SrRh₂. The computed reduced specific heat jump at the superconducting critical temperature is shown in the figures.

used a different symbol. The reason behind this difference is discussed in Ref. [30] and is related to the dependence of μ_c^* on the cutoff frequency, used while solving the Eliashberg equations. In our case, μ_c^* is 0.261 (SrIr₂) and 0.243 (SrRh₂), and to be compared with previously used μ^* has to be rescaled (more details in Ref. [15]) resulting in $\mu^* = 0.169$ and 0.161, respectively. These re-scaled values are now close to $\mu^* \simeq 0.15$, required to reproduce the experimental T_c using Allen-Dynes formula. This small enhancement of μ^* over the conventional (0.10–0.13) range of values may be related to spin-orbit coupling effects, Fermi surface complexity and slight enhancement of electronic interactions, as can be expected for our d -band metals.

The calculated temperature dependencies of electronic heat capacity C_e are shown in Fig. 16. The agreement between the computed and experimental results is worth emphasizing. The temperature profile of $C_e(T)$ and the value of the measured specific heat jump at the superconducting transition temperature remain in a very good agreement, the computed versus measured $\Delta C/\gamma T_c$ are 1.98 versus 2.08 for SrIr₂ and 1.70 versus 1.80 for SrRh₂. This finally confirms the strong electron-phonon coupling character of SrM₂ superconductors which are very well described by the isotropic s -wave Eliashberg theory.

VIII. SUMMARY AND CONCLUSIONS

In summary, the electronic structure, lattice dynamics, and superconductivity of two cubic Laves phase superconductors, SrM₂, $M = \text{Ir}$ and Rh, $T_c = 6.07$ and 5.41 K, were studied theoretically and experimentally. The crystal structure of both compounds is based on the underlying fcc structures of metallic Ir and Rh, where half of the atomic M_4 tetrahedrons are substituted by Sr atoms. From the electronic structure point of view, near the Fermi level, Sr effectively acts as an electron donor, shifting E_F above the characteristic peak in the density of states seen also in the case of elemental M metallic structures. More significant changes are made to the phonon structure, where locally, after $M_4 \rightarrow \text{Sr}$ substitution, the structure loses the dense-packed character. As a consequence, the frequencies of some of the Ir/Rh phonon modes, propagating in the network of tetrahedrons now spaced by Sr

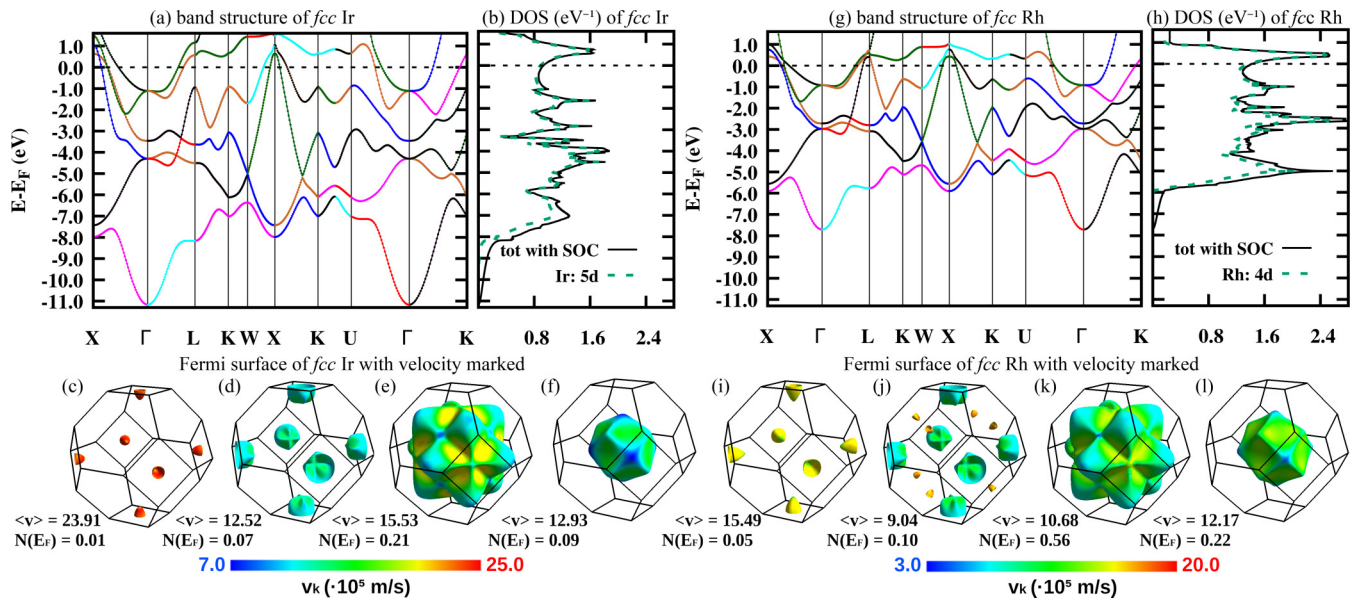


FIG. 17. Electronic band structure of [(a)–(f)] Ir and [(g)–(l)] Rh. Band structure (the points matched to each other with help of symmetry analysis are connected with colored lines), DOS with atomic contributions and Fermi surface colored with respect to Fermi velocity. Average Fermi velocity $\langle v \rangle$ (10^5 m/s) and density of states $N(E_F)$ (eV^{-1}) for each of the FS sheets are shown.

atoms, are reduced twice, compared to the elemental metal cases. This transfer of phononic states to the low frequency range is confirmed by the enhanced low-temperature specific heat and results in the strongly enhanced electron-phonon coupling. The enhancement in λ is possible because the electronic contribution to the EPC is less reduced in comparison to the average square Ir phonon frequency. Finally, the very-low- T_c , weakly coupled superconductors Ir and Rh ($\lambda \sim 0.35$, $T_c = 0.14$ and 0.3×10^{-3} K) become strongly coupled Laves phases, with $\lambda \sim 1$, the higher as the larger is the mass of M and the lower their phonon frequencies. This results in much higher critical temperature values of $T_c = 6.07$ and 5.41 K in SrIr₂ and SrRh₂, respectively.

The superconducting properties of SrM₂ may be compared to a related isoelectronic family of Laves phases CaM₂ ($M = \text{Ir, Rh}$) [41,50,51], which superconduct with slightly lower critical temperatures of 5.8 and 5.1 K. As they have the same crystal structure, the “phonon engineering” mechanism should also be responsible for the strongly coupled superconductivity in CaM₂, where $\lambda \simeq 1$ [41]. Analyzing the theoretical phonon and electron-phonon calculations reported in Ref. [41] indeed we see that the same mechanism may be identified. The electron-phonon coupling is dominated by Ir/Rh vibrations, whose frequencies are much reduced from their elemental metallic values after $M_4 \rightarrow \text{Ca}$ substitution. Moreover, the smaller mass of Ca compared to Sr is correlated with the lower T_c . This trend is further confirmed by the data obtained for BaRh₂ [13], which has the highest critical temperature (5.6 K) among all three XRh₂ compounds ($X = \text{Ca, Sr, Ba}$).

Summarizing this comparison, two ways of increasing the critical temperature among XM₂ Laves phases family of compounds are observed: when we substitute M with the isoelectronic heavier element from the next group of periodic

table (Rh \rightarrow Ir), then T_c is increased by $\sim 10\%$. Analogously, when X atom is substituted with a heavier element (Ca \rightarrow Sr \rightarrow Ba), then T_c is also increased, but the effect is weaker (T_c is changed of about 5%).⁴ The basis for superconductivity in all mentioned XM₂ is the significant reduction of phonon frequencies of M transition metals due to the local dilution of their closed-packed crystal structure. The understanding of this phonon engineering mechanism may potentially help to design new strongly coupled electron-phonon superconductors.

ACKNOWLEDGMENTS

This work was supported by the National Science Centre (Poland), Grants No. 2017/26/E/ST3/00119 (B.W. and S.G.), No. 2017/26/D/ST3/00109 (P.W.) and No. UMO-2019/33/N/ST5/01496 (K.G. and T.K.). S.G. was also partly supported by the EU Project No. POWR.03.02.00-00-I004/16.

APPENDIX

Electronic structures of crystalline metallic fcc Ir and Rh are shown in Fig. 17. Phonon dispersion relations, phonon densities of states $F(\omega)$ and the electron-phonon interaction functions $\alpha^2F(\omega)$ are shown in Fig. 18.

⁴Interestingly, all these trends are opposite to the one arising from the very first works of Matthias [11] ($T_c = 5.7$ K for SrIr₂, 6.2 K for SrRh₂, 4–6.15 K for CaIr₂, 6.4 K for CaRh₂, and 6.0 K for BaRh₂).

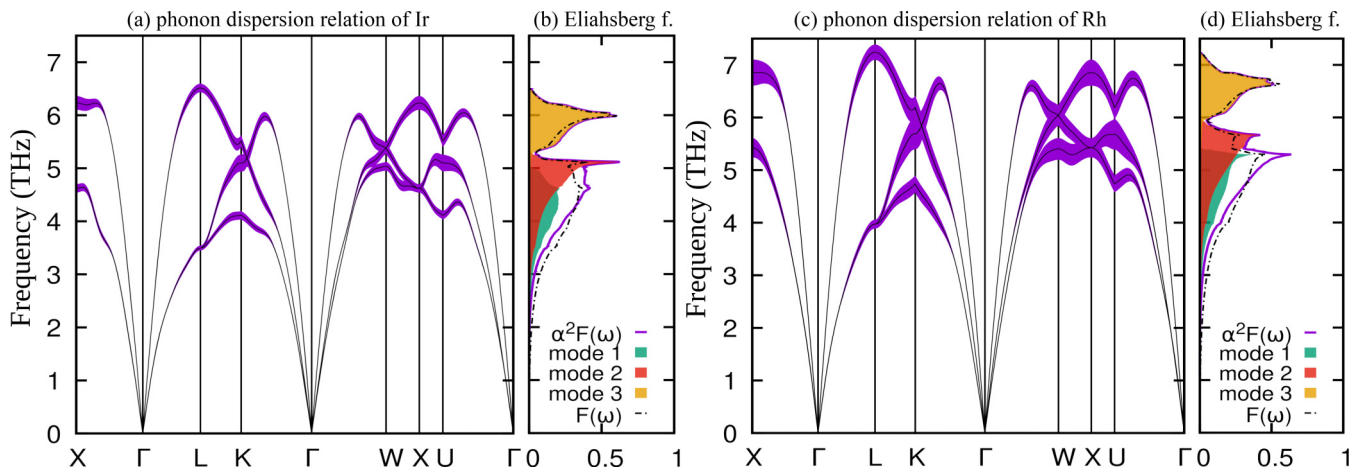


FIG. 18. Phonon dispersion relations with band shading proportional to the phonon linewidths ($\gamma_{\mathbf{q}}$ in THz multiplied by 4) of (a) Ir and (c) Rh. Electron-phonon interaction function $\alpha^2 F(\omega)$ and phonon DOS $F(\omega)$ normalized to $\alpha^2 F(\omega)$ for (b) Ir and (d) Rh.

- [1] F. Laves and H. Witte, Die Kristallstruktur des MgNi_2 und seine Beziehungen zu den Typen MgCu_2 und MgZn_2 , *Metallwirtsch* **14**, 645 (1935).
- [2] F. Laves and K. Löhberg, *Die Kristallstruktur von intermetallischen Verbindungen der Formel AB_2* (Weidmann, 1934).
- [3] G. E. R. Schulze, Zur Kristallchemie der intermetallischen AB_2 -Verbindungen (Laves-Phasen), *Z. Elektr. angew. phys. Chem.* **45**, 849 (1939).
- [4] C. T. Liu, J. H. Zhu, M. P. Brady, C. G. McKamey, and L. M. Pike, Physical metallurgy and mechanical properties of transition-metal laves phase alloys, *Intermetallics* **8**, 1119 (2000).
- [5] F. Stein and A. Leineweber, Laves phases: a review of their functional and structural applications and an improved fundamental understanding of stability and properties, *J. Mater. Sci.* **56**, 5321 (2021).
- [6] F. Stein, M. Palm, and G. Sauthoff, Structure and stability of Laves phases. Part I. Critical assessment of factors controlling Laves phase stability, *Intermetallics* **12**, 713 (2004).
- [7] J. H. Zhu, P. K. Liaw, and C. T. Liu, Effect of electron concentration on the phase stability of NbCr_2 -based Laves phase alloys, *Mater. Sci. Eng. A* **239**, 260 (1997).
- [8] S. Amerioun, S. I. Simak, and U. Häussermann, Laves-phase structural changes in the system $\text{CaAl}_{2-x}\text{Mg}_x$, *Inorg. Chem.* **42**, 1467 (2003).
- [9] N. Yurchenko, N. Stepanov, and G. Salishchev, Laves-phase formation criterion for high-entropy alloys, *Mater. Sci. Technol.* **33**, 17 (2017).
- [10] S. S. Mishra, T. P. Yadav, O. N. Srivastava, N. K. Mukhopadhyay, and K. Biswas, Formation and stability of C14 type Laves phase in multi component high-entropy alloys, *J. Alloys Compd.* **832**, 153764 (2020).
- [11] B. T. Matthias and E. Corenzwit, Superconducting alkaline earth compounds, *Phys. Rev.* **107**, 1558 (1957).
- [12] R. Horie, K. Horigane, S. Nishiyama, M. Akimitsu, K. Kobayashi, S. Onari, T. Kambe, Y. Kubozono, and J. Akimitsu, Superconductivity in 5d transition metal Laves phase SrIr_2 , *J. Phys.: Condens. Matter* **32**, 175703 (2020).
- [13] C. Gong, Q. Wang, S. Wang, and H. Lei, Superconducting properties of MgCu_2 -type Laves phase compounds SrRh_2 and BaRh_2 , *J. Phys.: Condens. Matter* **32**, 295601 (2020).
- [14] X. Yang, H. Li, T. He, T. Taguchi, Y. Wang, H. Goto, R. Eguchi, R. Horie, K. Horigane, and K. Kobayashi, Superconducting behavior of a new metal iridate compound, SrIr_2 , under pressure, *J. Phys.: Condens. Matter* **32**, 025704 (2019).
- [15] See Supplemental Materials at <http://link.aps.org/supplemental/10.1103/PhysRevB.104.054505> for the room temperature powder XRD patterns in Fig. S1; graphical representation of the substitution process in crystal structure $\text{Ir}_4 \rightarrow \text{SrIr}_2$ in Fig. S2; the visualization of phonon modes of supercell of Ir as displacement of atoms in real space in Fig. S3; the details of the calculation of electronic specific heat in the superconducting state using Eliashberg formalism, which includes Fig. S4 of the superconducting energy gap as a function of Coulomb pseudopotential μ^* .
- [16] R. A. Hein, J. W. Gibson, B. T. Matthias, T. H. Geballe, and E. Corenzwit, Superconductivity of Iridium, *Phys. Rev. Lett.* **8**, 408 (1962).
- [17] C. Buchal, F. Pobell, R. M. Mueller, M. Kubota, and J. R. Owers-Bradley, Superconductivity of Rhodium at Ultralow Temperatures, *Phys. Rev. Lett.* **50**, 64 (1983).
- [18] P. Giannozzi, S. Baroni, N. Bonini, M. Calandra, R. Car, C. Cavazzoni, D. Ceresoli, G. L. Chiarotti, M. Cococcioni, I. Dabo, A. Dal Corso, S. de Gironcoli, S. Fabris, G. Fratesi, R. Gebauer, U. Gerstmann, C. Gougoussis, A. Kokalj, M. Lazzeri, L. Martin-Samos *et al.*, Quantum espresso: a modular and open-source software project for quantum simulations of materials, *J. Phys.: Condens. Matter* **21**, 395502 (2009).
- [19] P. Giannozzi, O. Andreussi, T. Brumme, O. Bunau, M. B. Nardelli, M. Calandra, R. Car, C. Cavazzoni, D. Ceresoli, M. Cococcioni, N. Colonna, I. Carnimeo, A. D. Corso, S. de Gironcoli, P. Delugas, R. A. DiStasio, A. Ferretti, A. Floris, G. Fratesi, G. Fugallo *et al.*, Advanced capabilities for materials

- modelling with quantum ESPRESSO, *J. Phys.: Condens. Matter* **29**, 465901 (2017).
- [20] J. P. Perdew, K. Burke, and M. Ernzerhof, Generalized Gradient Approximation Made Simple, *Phys. Rev. Lett.* **77**, 3865 (1996).
- [21] A. Dal Corso, Pseudopotentials periodic table: From H to Pu, *Comput. Mater. Sci.* **95**, 337 (2014).
- [22] S. Baroni, S. de Gironcoli, A. Dal Corso, and P. Giannozzi, Phonons and related crystal properties from density-functional perturbation theory, *Rev. Mod. Phys.* **73**, 515 (2001).
- [23] H. P. Singh, Determination of thermal expansion of germanium, rhodium and iridium by X-rays, *Acta Cryst. A* **24**, 469 (1968).
- [24] E. A. Wood and V. B. Compton, Laves-phase compounds of alkaline earths and noble metals, *Acta Cryst.* **11**, 429 (1958).
- [25] A. Umezawa, G. W. Crabtree, J. Z. Liu, T. J. Moran, S. K. Malik, L. H. Nunez, W. L. Kwok, and C. H. Sowers, Anisotropy of the lower critical field, magnetic penetration depth, and equilibrium shielding current in single-crystal YBa₂Cu₃O_{7- δ} , *Phys. Rev. B* **38**, 2843 (1988).
- [26] J. A. T. Barker, B. D. Breen, R. Hanson, A. D. Hillier, M. R. Lees, G. Balakrishnan, D. McK. Paul, and R. P. Singh, Superconducting and normal-state properties of the noncentrosymmetric superconductor Re₃Ta, *Phys. Rev. B* **98**, 104506 (2018).
- [27] C. P. Poole Jr, H. A. Farach, R. J. Creswick, and R. Prozorov, *Superconductivity* (Academic Press, 2010).
- [28] W. L. McMillan, Transition temperature of strong-coupled superconductors, *Phys. Rev.* **167**, 331 (1968).
- [29] F. Marsiglio and J. P. Carbotte, Strong-coupling corrections to Bardeen-Cooper-Schrieffer ratios, *Phys. Rev. B* **33**, 6141 (1986).
- [30] P. B. Allen and R. C. Dynes, Transition temperature of strong-coupled superconductors reanalyzed, *Phys. Rev. B* **12**, 905 (1975).
- [31] A. O. de-la Roza, E. R. Johnson, and V. Luaña, Critic2: A program for real-space analysis of quantum chemical interactions in solids, *Comput. Phys. Commun.* **185**, 1007 (2014).
- [32] F. D. Murnaghan, The compressibility of media under extreme pressures, *Proc. Natl. Acad. Sci. USA* **30**, 244 (1944).
- [33] G. Grimvall, *The Electron-Phonon Interaction in Metals* (North-Holland, Amsterdam, 1981).
- [34] G. T. Furukawa, M. L. Reilly, and J. S. Gallagher, Critical analysis of heat-capacity data and evaluation of thermodynamic properties of ruthenium, rhodium, palladium, iridium, and platinum from 0 to 300 K. A survey of the literature data on osmium, *J. Phys. Chem. Ref. Data* **3**, 163 (1974).
- [35] M. Wierzbowska, S. de Gironcoli, and P. Giannozzi, Origins of low-and high-pressure discontinuities of T_c in niobium, [arXiv:cond-mat/0504077](https://arxiv.org/abs/cond-mat/0504077).
- [36] R. Heid, K. P. Bohnen, I. Yu. Sklyadneva, and E. V. Chulkov, Effect of spin-orbit coupling on the electron-phonon interaction of the superconductors Pb and Tl, *Phys. Rev. B* **81**, 174527 (2010).
- [37] F. Giustino, Electron-phonon interactions from first principles, *Rev. Mod. Phys.* **89**, 015003 (2017).
- [38] J. Engelkemier and D. C. Fredrickson, Chemical pressure schemes for the prediction of soft phonon modes: A chemist's guide to the vibrations of solid state materials, *Chem. Mater.* **28**, 3171 (2016).
- [39] A. Eichler, K.-P. Bohnen, W. Reichardt, and J. Hafner, Phonon dispersion relation in rhodium: Ab initio calculations and neutron-scattering investigations, *Phys. Rev. B* **57**, 324 (1998).
- [40] J. Abart, W. Sanger, and J. Voitlander, On the temperature dependence of the magnetic susceptibility of rhodium, *J. Magn. Magn. Mater.* **28**, 282 (1982).
- [41] H. M. Tutuncu, H. Y. Uzunok, E. Karaca, E. Arslan, and G. P. Srivastava, Effects of spin-orbit coupling on the electron-phonon superconductivity in the cubic Laves-phase compounds CaIr₂ and CaRh₂, *Phys. Rev. B* **96**, 134514 (2017).
- [42] S. Gołab and B. Wiendlocha, Electron-phonon superconductivity in CaBi₂ and the role of spin-orbit interaction, *Phys. Rev. B* **99**, 104520 (2019).
- [43] G. Kuderowicz, P. Wójcik, and B. Wiendlocha, Non-s-wave superconductivity in noncentrosymmetric ThCoC₂: Ab initio calculations and Eliashberg formalism, [arXiv:2105.03472](https://arxiv.org/abs/2105.03472).
- [44] G. M. Eliashberg, Interactions between electrons and lattice vibrations in a superconductor, *Sov. Phys.-JETP* **11**, 696 (1960).
- [45] G. P. Srivastava, Broyden's method for self-consistent field convergence acceleration, *J. Phys. A: Math. Gen.* **17**, 2737 (1984).
- [46] J. P. Carbotte, Properties of boson-exchange superconductors, *Rev. Mod. Phys.* **62**, 1027 (1990).
- [47] R. Szczęśniak, A. P. Durajski, and Ł. Herok, Thermodynamic properties of antiperovskite MgCNi₃ in superconducting phase, *Solid State Commun.* **203**, 63 (2015).
- [48] P. Morel and P. W. Anderson, Calculation of the superconducting state parameters with retarded electronphonon interaction, *Phys. Rev.* **125**, 1263 (1962).
- [49] E. A. Drzazga, I. A. Domagalska, M. W. Jarosik, R. Szczęśniak, and J. K. Kalaga, Characteristics of superconducting state in vanadium: The Eliashberg equations and semi-analytical formulas, *J. Supercond. Novel Magn.* **31**, 1029 (2018).
- [50] N. Haldolaarachchige, Q. Gibson, L. M. Schoop, H. Luo, and R. J. Cava, Characterization of the heavy metal pyrochlore lattice superconductor CaIr₂, *J. Phys.: Condens. Matter* **27**, 185701 (2015).
- [51] K. Górnicka, R. J. Cava, and T. Klimczuk, The electronic characterization of the cubic Laves-phase superconductor CaRh₂, *J. Alloys Compd.* **793**, 393 (2019).