

Numerical methodology for evaluation the combustion and emissions characteristics on WLTP in the light duty dual-fuel diesel vehicle

ARTICLE INFO

Received: 13 July 2021
Revised: 21 October 2021
Accepted: 25 October 2021
Available online: 22 November 2021

The worldwide aim of reducing environmental impact from internal combustion engines bring more and more stringent emission regulations. In 2017 by EU has been adopted new harmonized test procedure called WLTP. In general terms this test was designed for determining the levels of harmful emissions and fuel consumption of traditional and hybrid cars. This procedure contains specific driving scenarios which representing real-life driving patterns. Test cycles contain vehicle velocity versus time profiles and directly in powertrain analysis on the test benches cannot be used. In order to back calculate drive cycles to engine rpm versus torque profiles a simple longitudinal vehicle dynamics method was used in this paper. Moreover, in order to determine most representative engine operation points during WLTP a density based grid clustering method was implemented. The experimental part of the study focuses on the comparative evaluation of the effect of various diesel to LPG substitution ratios (0% LPG, 10% LPG, 20% LPG and 30% LPG) on combustion and emission characteristics of dual-fuel diesel engine.

Key words: dual-fuel engine, drive cycle simulation, internal combustion engine, emission reduction, alternative fuels, WLTP

This is an open access article under the CC BY license (<http://creativecommons.org/licenses/by/4.0/>)

1. Introduction

The worldwide environmental considerations provide to increasing the stringent regulations that are aimed to lowering the harmful emissions (HC, CO, PM and NO_x) in the exhaust gases of the internal combustion engines. In 2017 the Worldwide Harmonized Light Vehicles Test Procedure has been adopted as the new test procedure in the European type-approval system and replaces the New European Driving Cycle. While the NEDC was based on theoretical driving scenarios, the WLTP was developed using real-driving data with the aims to provide real-life driving conditions. Moreover, WLTP includes several test cycles (called WLTC) applicable to vehicle categories of different rated power to curb mass ratio. In general, WLTP driving cycles is divided into four parts with different average speeds: urban driving (low), suburban driving (medium), extra-urban driving (high), and a highway zone (extra high) (Table 1). Each part contains a variety of driving phases (varying vehicle velocity within time) shown in Fig. 1.

Table 1. WLTC test cycles for conventional vehicles [17]

Vehicle category	PMR [W/kg]	V _{max} [km/h]	Driving phases
1	22 ≤ PMR	–	Low + Medium + Low
2	22 < PMR ≤ 34	–	Low + Medium + High + Extra High
3a	PMR >34	< 120	Low + Medium + High + Extra High
3b		≥ 120	Low + Medium + High + Extra High

Driving cycles are used to gain a quantitative understanding of fuel consumption and emissions for traditional and hybrid cars during either development phase or homologation process under specific driving scenarios. Moreover, these driving cycles allows to perform powertrain analysis during real-life driving or during investigations on the test

benches. In order to use driving patterns in test bench investigations they must be back calculated from vehicle velocity versus time profiles to engine rpm vs. torque profiles. This objective can be achieved by the longitudinal vehicle dynamics approach. Longitudinal dynamics approach is a low time consumption method that makes use of as limited information as possible referring mainly to already available data sources in combination with empirical models, while allows to, provide simulation with required accuracy.

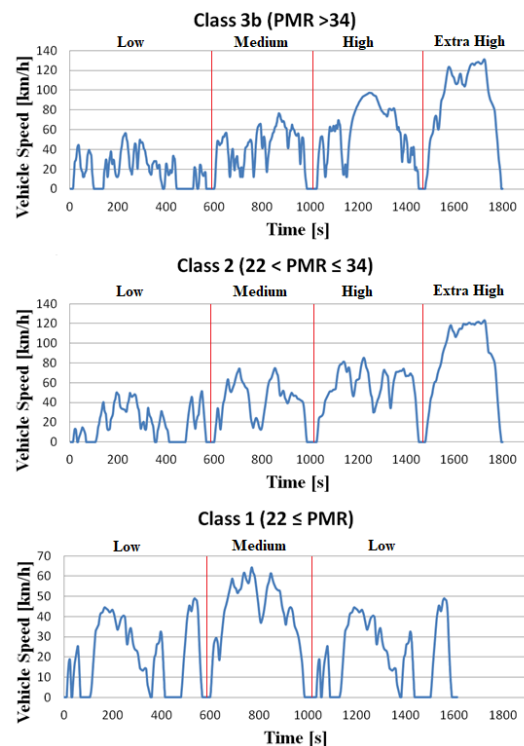


Fig. 1. Speed vs. time traces of the WLTC driving cycle for all vehicle classes [17]

The current work presents simple longitudinal dynamics method in combination with WLTP gear-shifting rules and density based grid clustering method for assessing the introduction of Worldwide Harmonized Light Vehicles Test Procedure in the light duty dual-fuel diesel vehicle (using the example a Golf IV car). Moreover, combustion and emission characteristics of various diesel fuel to LPG substitution ratios (0% LPG, 10% LPG, 20% LPG and 30% LPG) in the most representative operation points during the WLTP are evaluated in this article.

2. Methodology

In this work, fuel effect on engine performance and emissions has been evaluated under Worldwide Harmonized Light Vehicles Test Procedure. In order to back calculate specific drive patterns to engine rpm and torque, was selected commercial FWD passenger vehicle Golf IV, made by Volkswagen factory, technical specifications are presented in Table 2 and Fig. 2.

Depending on the rated power to curb mass ratio of Golf IV 3b test scenario (time-based profile of vehicle speed) (Fig. 1) has been selected.

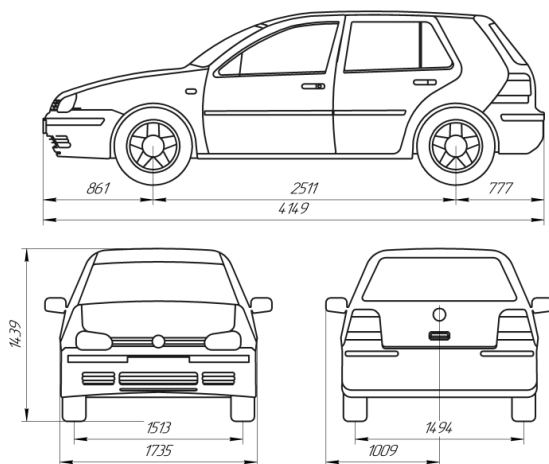


Fig. 2. Volkswagen Golf IV dimensions [19]

Table 2. Volkswagen Golf IV technical specifications [19]

Parameter	Unit	Value
Brand, Model & Generation	–	Volkswagen Golf IV
Production	year	2000
Maximum speed	km/h	195
Vehicle curb weight	kg	1237
Vehicle gross weight	kg	1300
Vehicle total weight	kg	1780
Tires	–	195/65 R15
Gearbox	–	Manual 6-Gear

2.1. Longitudinal dynamic method description

Longitudinal dynamic model implements a one degree-of-freedom rigid vehicle body with constant mass undergoing longitudinal motion. The vehicle axles are parallel and form a plane. The longitudinal direction lies in the parallel plane and is perpendicular to the axles. If the vehicle is traveling on a slope, the normal direction is not parallel to

gravity but is always perpendicular to the axle-longitudinal plane (MathWorks, n.d.).

All forces acting on the vehicle during the motion shown in Fig. 3.

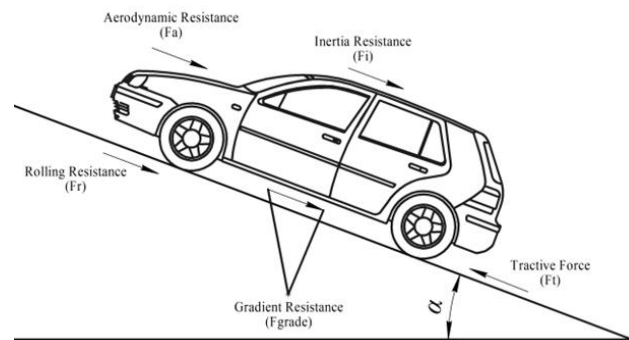


Fig. 3. Forces distribution under longitudinal motion

In general term, to ensure vehicle motion a provided torque from powertrain system on a driving wheels, must allow to obtain a force exceeding the motion resistance forces. Figure 4 illustrates a simplified version of the engine powertrain system.

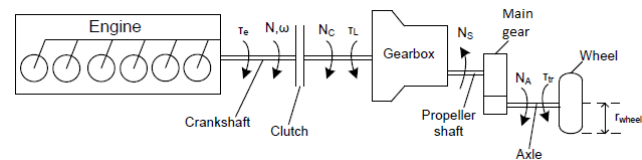


Fig. 4. Conceptual illustration of powertrain system [5]

2.2. Powertrain analysis

In this analysis we assume that the road surface is to be flat and vehicle will behave according to Newton's second law. The basic equation can be expressed as

$$\sum F_t = \sum F_{tr} \quad (1)$$

The powertrain model includes the various sub-modules vehicle dynamics model, wheel dynamics model and gear shifting strategy. Application of the below-described sub-models is necessary so as to convert the vehicle speed vs. time profile (Fig. 1), into engine torque vs. speed profile (Fig. 7). After that, the grid clustering method followed by experimental analysis can be applied.

2.3. Vehicle dynamics model

The first step of the calculation is to derive all resistance forces acting on car during motion. The four resistance forces experienced by a vehicle during the motion are the aerodynamic resistance, tire rolling resistance, gradient resistance and inertia resistance. Total traction resistance is given by

$$\sum F_{tr} = F_r + F_a + F_i + F_{grade} \quad (2)$$

2.3.1. Aerodynamic resistance

The component of exerted force that acts on moving object by the air in opposite direction relative to their motion called aerodynamic resistance. This resistance can be approximated as [2, 3, 5, 8]:

$$F_a = 0.5 \times \rho \times C_d \times A_f \times V^2 \quad (3)$$

where

$$A_f = 0.9 \times H \times B \quad (4)$$

The aerodynamic drag coefficient varies according to the vehicle shape. The most common values for this coefficient shown in Fig. 5.

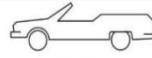





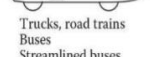
Vehicle type	Coefficient of aerodynamic resistance
 Open convertible	0.5...0.7
 Van body	0.5...0.7
 Ponton body	0.4...0.55
 Wedge-shaped body; headlamps and bumpers are integrated into the body, covered underbody, optimized cooling air flow	0.3...0.4
 Headlamp and all wheels in body, covered underbody	0.2...0.25
 K-shaped (small breakaway section)	0.23
 Optimum streamlined design	0.15...0.20
Trucks, road trains	0.8...1.5
Buses	0.6...0.7
Streamlined buses	0.3...0.4
Motorcycles	0.6...0.7

Fig. 5. Aerodynamic drag coefficient for different vehicle types [3]

2.3.2. Tire rolling resistance

The tire rolling resistance is a force applied to each wheel with a dynamic radius with opposite direction to the car's motion. This force is calculated from equation (5) [2, 8]:

$$F_r = m_v \times g \times C_{rr} \times \cos\alpha \quad (5)$$

The rolling resistance coefficient depends on the road surface and determined experimentally. The typical values of the rolling resistance coefficient given in Table 3.

Table 3. Rolling resistance coefficient [6]

Road and pavement condition	Value
Very good concrete	0.008–0.01
Very good tarmac	0.01–0.0125
Average concrete	0.01–0.015
Very good pavement	0.015
Very good macadam	0.013–0.016
Average tarmac	0.018
Concrete in poor condition	0.02

2.3.3. Gradient resistance

If the car moves on a sloping road, weight of the vehicle produces a component of gravitational force, which acts on the vehicle center of gravity and always directed downward. This force is usually called gradient resistance. Generally, in standard tests assumed flat road surface therefore [5, 8]:

$$F_{\text{grade}} = 0 \quad (6)$$

However, gradient resistance can be calculated from this equation [2, 8]:

$$F_{\text{grade}} = m_v \times g \times \sin\alpha \quad (7)$$

2.3.4. Inertia resistance

During the car motion with acceleration, an inertial force is produced, which acts on the center of the vehicle mass in opposite direction to its motion. This force usually called inertia resistance and can be calculated from this equation [2, 6]:

$$F_i = m_i \times \frac{dV}{dt} \quad (8)$$

2.3.5. Vehicle inertia mass

The inertia mass is a total mass of the vehicle increased by the mass factor [1, 7]:

$$m_i = m_v \times \delta \quad (9)$$

Mass factor can be approximated from the equation below [2, 8]:

$$\delta = d_1 + d_2 \times i_g^2 \quad (9)$$

where

$$d_1 = \frac{1 + \sum J_w}{r_d^2 \times m_v} \quad (11)$$

$$d_2 = \frac{J_p \times \eta_t \times i_0^2}{r_d^2 \times m_v} \quad (12)$$

If mass moments of inertia of the rotating parts associated to the powertrain system are not known, the mass factor, for a passenger car can be estimated from the following empirical equation:

$$\delta = 1.04 + 0.024 \times i_g^2 \quad (13)$$

2.4. Wheel dynamics model

In this block as described in the equations below are calculated:

1. Wheel rotating speed from the velocity profile

$$V = \frac{\pi \times N_c \times r_d}{30 \times i_g \times i_0} \quad (14)$$

2. Tractive force, as a result of engine torque transmitted on the driven wheels, from vehicle powertrain system, as described in the equation below [5, 19, 21]

$$F_t = \frac{T_e \times i_g \times i_0 \times \eta_t}{r_d} \quad (15)$$

where

$$r_d = 0.97 \times (h + r) \quad (16)$$

2.5. Gearshift strategy

In this step specific shifting points are predicted, via gear shifting strategy for vehicles with manual transmission introduced in (UNECE, 2021). WLTP gear selection algorithm taking into account the different powertrain configurations and was designed in a way to emulate the gear shifting strategy from the real-life driving. The gear shifting process influencing on powertrain inertia and engine output speed, which as a result affects on the vehicle acceleration performance and fuel consumption. Hereby, to represent real-life driving patterns proper calculation of the gear shifting sequence is an important event during the back calculation phase. In order to determine required gears and shifting points the following boundary conditions and data are needed in gear selection algorithm:

1. Boundary conditions that shall not be less or greater (minimum and maximum engine speed, maximum rated engine power and the corresponding rated engine speed, number of forward gears, vehicle velocity limits and others).
2. Full load power curve versus engine speed profile: the engine power demand at the resulting engine speed cannot exceed the full-load output power curve of the engine.

In general term, the calculated gear in WLTP is the gear that ensure that the engine speed is lie between a defined minimum and maximum value while providing the necessary traction power with simultaneous fulfillment of additional requirements described in [17] (i.e. avoidance instabilities in gear shifting, ensuring drive ability and others).

The generated gear shifting sequence with final engine torque vs. time profile for diesel vehicle Volkswagen Golf IV illustrated in Fig. 6 and Fig. 7.

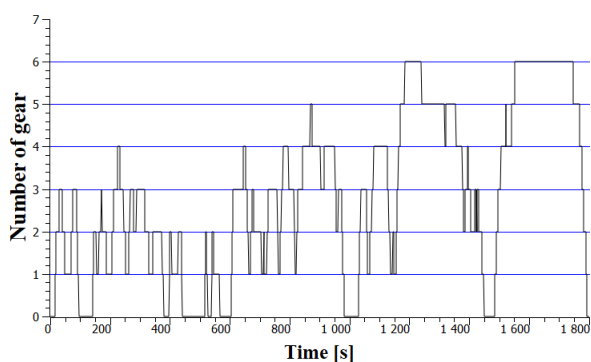


Fig. 6. Calculated gear gearshift strategies

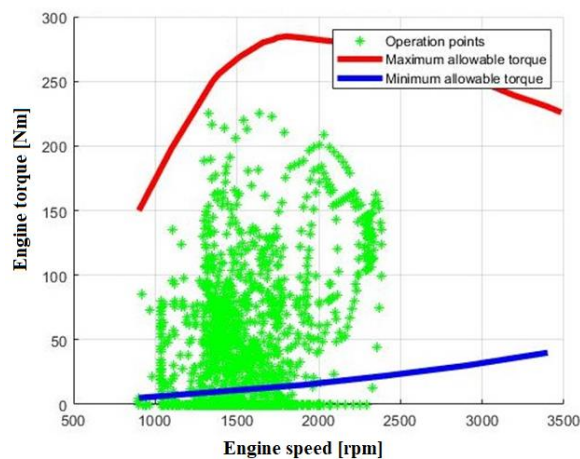


Fig. 7. Calculated engine torque vs. time profile under WLTC 3b

In Figure 7 presented covered speed/power region for selected diesel vehicle during WLTC 3b. Moreover, Fig. 7 shows two curves. Red one represents maximum torque curve presented in (Volkswagen, n.d.). Blue one represents minimum available torque that the engine can obtain. Minimum torque curve is a result of the characteristics of the hydraulic dynamometer (The hydraulic dynamometer always is under load conditions, therefore engine cannot obtain a torque under its minimum).

3. Grid clustering method

In this step we assume that the OP below minimum torque curve (blue line in Fig. 7) does not taken into account during the calculating phase. Calculation of the weighted operation points was performed with a simple grid clustering approach. There are, many different types of Grid Based Clustering Algorithms (CLIQUE (CLUSTERING IN QUEST), STING (A Statistical Information Grid Approach to spatial Data Mining), Wave Cluster and others) that are described in many scientific works such as [10, 12, 20] and others. In general, summarizing the information presented in the above publication, the grid-based clustering algorithm has a features described below. A major advantage of this method is fast processing of the data. The computational complexity depends on the number of cells in the spatial area. The basic concept of a grid clustering method is to organize data, by collecting points that falls within prescribed boundaries (rectangular blocks) into groups. The purpose of clustering is to reduce the amount of data being stored while still producing a set of operation points that represent the overall driving cycle.

A simple density based grid clustering algorithm consists of the following calculation steps:

1. Initialization phase: During this phase user defines the grid size as a step along the X axis and the Y axis.
2. Creation of the grid structure (The quantized space is divided into predetermined (in first step) number of cells to form grid structure).
3. Calculation of the density (amount of OP) for each cluster in the grid structure.
4. Identifying the average values along X and Y axis for each cluster.
5. Selection the operation point (for each cluster) with parameters closest to the average values (X and Y position).
6. Setting the diameter of the OP corresponds to the number of engine operating points in the cluster.

The result of the grid clustering binning is presented in Fig. 8.

To assess the combustion and emission characteristics in a light-duty diesel engine under WLTC a seven steady-state operating points was chosen (Table 4) in the range of engine operating points (Fig. 8). Note that the variations of torque and engine speed within test matrix are the same of the area were the majority of the operation points lie.

Table 4. Selected operation points

OP N°	Engine speed [rpm]	Torque [Nm]	Sampling frequency [kHz]	Share in test[%]
p1	1315	22	72	14.54
p2	1350	56	73	22.28
p3	1375	92	75	6.8
p4	1650	23	90	13.03
p5	1690	71	92	12.74
p6	1726	91	94	7.74
p7	2280	145	124	5.28

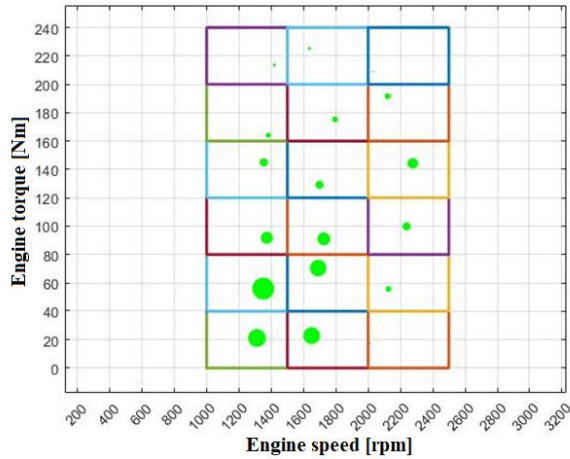


Fig. 8. Binned engine operation points under WLTC 3b

4. Experimental setup

Experiments at seven OP were conducted on a commercial direct injection turbocharged diesel engine AJM 1.9 TDI, made by Volkswagen factory, which is a four stroke, four-cylinder, water-cooled engine. Main characteristics of the base engine are presented in Table 5.

The schematic diagram of the test bench is showed in Fig. 9. Diesel engine has been properly adapted by Skat-Tech company to work under dual-fuel mode (diesel fuel and LPG). In this operation mode LPG in gaseous form inducted directly into the inlet manifold to form homogeneous mixtures with intake air. This fuel mixture ignited by the pilot quantity of diesel fuel directly injected in the cylinder. Dual-fuel mode is a proven solution that allows slightly reduce harmful compounds in exhaust gases. Moreover, dual-fuel adaptation is inexpensive and requires minimum installation of additional components. No additional modifications in EGR rate, engine tuning, i.e. injection timing of the pilot fuel and others does not applying.

In-cylinder pressure is acquired with AutoPSI-S fiber optics-based cylinder pressure sensor made by Optrand Inc. The crankshaft position was measured with a digital shaft encoder type CKQH-58 made LIKA. In order to analyze the in-cylinder pressure and net heat release rate the pressure and crankshaft angle data of 150 consecutive cycles are sampled and recorded. Data acquisition were carried out using the module USB-6212 manufactured by National Instruments that was connected to a PC via USB interface. Sampling frequency of data acquisition module for seven OP was calculated according to the Nyquist–Shannon sampling theorem and presented in Table 4. This theorem states that to accurately reconstruct the waveform of the signal the rate of sampling frequency must be greater more than twice the highest frequency of the signal.

In particular, for the continuous measurement of toxic emissions, the exhaust gas analyzer KIGAZ-310 by KIMO was employed. This gas detector used for measuring oxides of nitrogen (NO_x), carbon monoxide (CO), carbon dioxide (CO_2) and oxygen (O_2) concentration in the exhaust gas.

The net heat release rate (NHRR) is calculated by applying the first law of thermodynamics. The main equation to determine the apparent NHRR for the ICE can be expressed as

$$\frac{dQ}{d\phi} = \frac{\gamma}{\gamma-1} \times p \frac{dV_c}{d\phi} + \frac{1}{\gamma-1} \times V_c \frac{dp}{d\phi} \quad (17)$$

where

$$\gamma = \frac{C_p}{C_v} \quad (18)$$

The consumption of LPG and diesel fuel are measured by an electronic scales made by AWO firm. All the signals from the measuring devices and instruments were fed to a PC via USB interface.

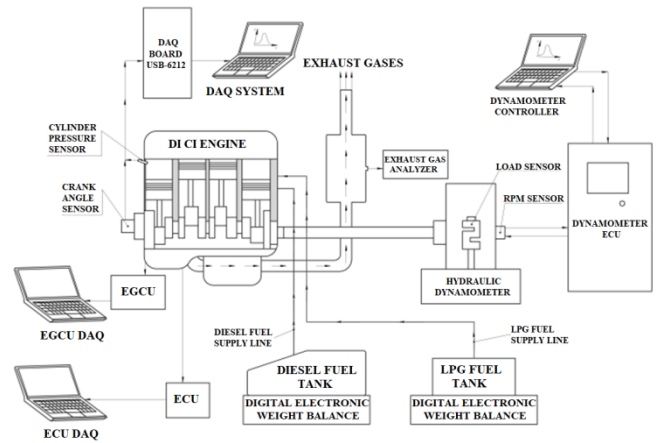


Fig. 9. Test bench schema

Table 5. Base engine specifications

Parameter	Unit	Value
Displacement	[cm ³]	1896
Diesel fuel injector type	–	pump and nozzle unit
Gas fuel injector type	–	4-cylinder LPG/CNG injection rail BARRACUDA
Number of cylinders	–	4
Number of valves per cylinder	–	2
Bore	[mm]	79.5
Stroke	[mm]	95.5
Compression ratio	–	18.0:1
Maximum speed	[rpm]	4000
Rated power	[kW]	85
Maximum torque at 1900 rpm	[Nm]	285

The effects of LPG proportion on combustion and emissions under selected OP are investigated. The test fuel is DF100, DF90, DF80 and DF70, which include 0% LPG, 10% LPG, 20% LPG and 30% LPG on an energy basis respectively. The physic-chemical properties of LPG and diesel fuel are shown in Table 6.

To present the percentage of LPG in the blended fuel on an energy basis, the following equation is used,

$$SR = \frac{\dot{m}_G \times LHV_G}{\dot{m}_D \times LHV_D + \dot{m}_G \times LHV_G} \times 100\% \quad (19)$$

Increasing gaseous fuel quantity means changing the air fuel ratio. In order to ensure an equivalence engine performance for both the normal diesel mode and the dual-fuel mode AFR must be at the same level (or need to be in this range). Obtaining similar AFR for an engine running in single- or dual-fuel mode required calibrations of the

EGCU lookup tables. The calibration process is described in sufficient detail in the previous work [14].

AFR was calculated according to simple equation [7]:

$$\lambda = \frac{21}{21+O_2} \quad (20)$$

where O_2 value presented in Fig. 14.

Table 6. Properties of diesel fuel and LPG [11, 14]

Parameter	Unit	Diesel fuel	LPG (60% butane and 40% propane)
Molecular weight	[g/mol]	96	≈ 52.5
Liquid density at 20°C	[kg/m ³]	800–840	≈ 566
Vapor pressure at 25°C	[bar]	–	≈ 5
Cetane number		40–55	≈ 4
Lower heating value	[MJ/kg]	≈ 42.91	≈ 46
Latent heat of evaporation	[kJ/kg]	250	≈ 405
Stoichiometric air to fuel ratio	[kg/kg]	14.6	≈ 15.2

5. Results and discussion

5.1. The combustion characteristics

Received pressure data was averaging and calculated pressure curves were positioned as a function of crank angle, the results shown in figure below. The effect of various LPG to diesel fuel blends on in-cylinder pressure and net heat release rate in three OP (p_1 – 1315 rpm, 22 Nm, p_5 – 1690 rpm, 71 Nm, p_7 – 2280 rpm, 145 Nm) are shown in Fig. 10. Note, that all motored pressure traces were measured under zero load conditions. It is clearly seen from Fig. 10, that the higher LPG percentage produces lower pressure rise rate compared to diesel fuel. This may refer to the reduction in volumetric efficiency, poor in cylinder mixing quality of fuels (LPG to Diesel), an abundant presence of residual gases and incomplete combustion of the fuel mixture.

It is found that the net heat release rate has same tendency as pressure traces and for diesel NHRR is higher than the other LPG/diesel fuel blends. Lower NHRR except the reasons described above, may informs about low-temperature flames during the combustion. Low temperature leads to a slower reaction rate, which influence on the concentration of NO_x , HC and CO in the exhaust gases. It is also seen that as the load and speed increases, the NHRR increases too. This may refer to a faster reaction rate and better flame propagation with an increase in cylinder pressure.

Furthermore, the reduction in the amount of liquid fuel used to initiate the combustion has adverse effects on the quality of liquid fuel spray. This produces poor liquid fuel preparation and atomization due to a slow development of fine droplets which affects the mixture combustion process [15].

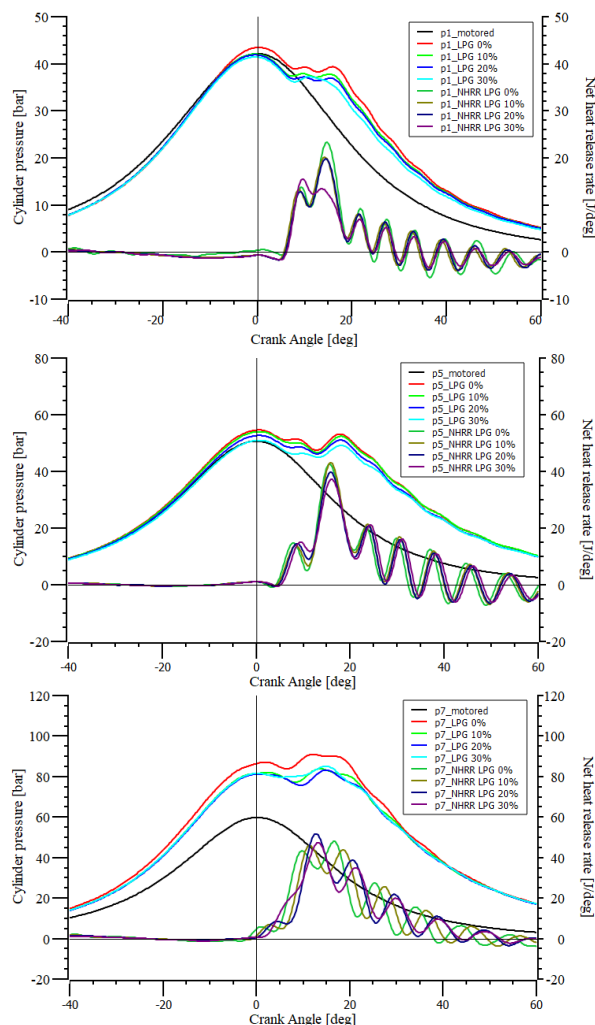


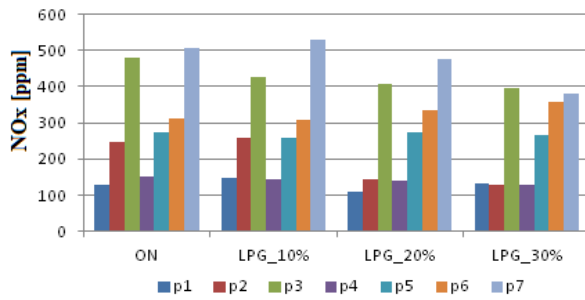
Fig. 10. Cylinder pressure and net heat release rate variations

5.2. Emission characteristics

After averaging the emissions data, the results has been presented in figures below. NO_x is one of the main pollutants emitted by diesel engines, which is toxic and the main precursor to photochemical smog. Nitrogen Oxides (NO_x) are products of burning of hydrocarbon fuels under high pressure and temperature conditions in the cylinder. Figure 11 shows the effect of LPG proportion on NO_x emissions. With the increase of load and engine speed, NO_x emissions increase too due to the higher in-cylinder temperature. Higher LPG proportion in fuel mixture leads to a simultaneous reduction in NO_x emissions. The reasons, to explain this can be:

1. As the LPG proportion increases the quantity of fed diesel simultaneously decreases.
2. The temperature drop of the mixture due to heat absorption during LPG vaporization (as a result of higher latent heat value of LPG).

However, temperature drop can lead to incomplete combustion which results in increasing the content of HC and CO.

Fig. 11. The comparison of NO_x emissions

Figures 12 and 13 show comparative values of CO and CO₂ in the exhaust gases. It can be seen that CO emissions are higher under dual-fuel mode than those in single-fuel. The main reason is a low cylinder gas temperature due to temperature drop. In addition CO concentration in exhaust gases possibly increases due to low cetane number of LPG and problems associated with mixing air and gaseous fuel [15]. Carbon monoxide (CO) is a product of incomplete combustion due to limited oxygen supply or an excess of carbon. The higher CO concentration in exhaust gases can be overcome by varying factors i.e. pilot fuel quantity, injection timing. According to the author [3], the CO emissions could be reduced with an earlier injection period, which would promote a better rate of CO emissions decomposition and oxidation. Rise of CO when the LPG proportion increases is caused by not optimal injection timing for dual fuel mode [9].

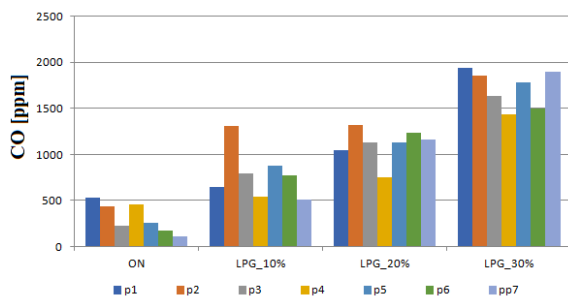
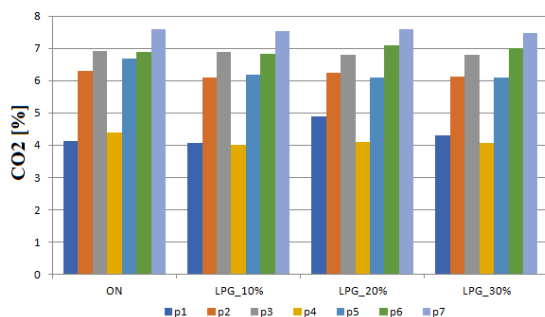
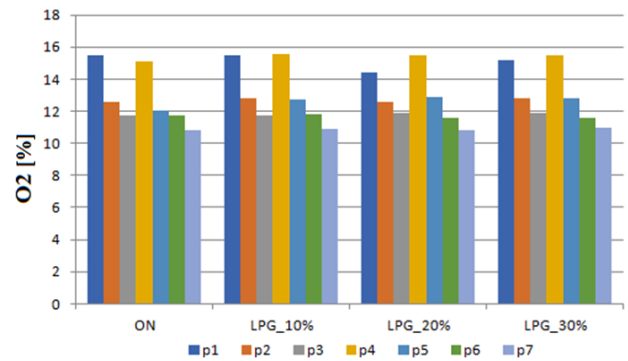


Fig. 12. The comparison of CO emissions

CO₂ as shown in Fig. 13 regardless to LPG proportion is on the same level. This can be explained by the fact that the same AFR (which is confirmed by the content of O₂ in exhaust gases shown in Fig. 14) was maintained at all operational points.

Fig. 13. The comparison of CO₂ emissionsFig. 14. The comparison of O₂ emissions

6. Summary and conclusions

The present paper collates the outcomes of a wide research activity devoted to evaluating the effect of various LPG proportion on combustion and emissions under WLTC, in a four-cylinder dual-fuel direct injection turbo-charged diesel engine AJM 1.9 TDI. Summing up the paper and the results of the research, the main conclusions drawn are:

1. Back calculate methodology was proposed to estimate engine speed and torque during the WLTC driving cycle. The procedure is based on the simple longitudinal dynamics approach.
2. In order to determine OP's, density based grid clustering method was proposed and implemented.
3. The effects of various LPG proportion on combustion and emissions characteristics reveals that, in the tested operating points, the use of LPG offers a reduction of NO_x compared to the diesel fuel. The drawbacks concerning to the LPG use are associated with incomplete combustion, lower pressure rise rate with respect to original ones (diesel fuel) and an increment of unburned hydrocarbons that leads to a strong increment of carbon dioxide emissions. In addition by the fact that the AFR in single- and dual-fuel mode was at the same level, CO₂ emissions under all OP's are similar.

It seems that LPG dual-fuel combustion mode is a promising technique for controlling NO_x emissions [1] especially on existing diesel engines with slight modification to the engine structure. Overall, the proper adaptation and optimization of the diesel engine operating conditions including the injection strategy as well as ECU operation algorithms need to be done in order to obtain the improved performance and engine out emissions in dual-fuel operation mode. For Euro 6 and higher engines, the addition of LPG will worsen the emission factors.

The publication focuses on the preparation of a methodology for testing a dual-fuel engine on an engine dynamometer. Although the diesel and LPG fueled engine was tested, the methodology is being prepared for other synthetic fuels that will be used in the future.

Acknowledgements

The authors wish to express their deep thanks to the Ski-Tech company (street Franciszka Okroja 22, 80-297 Miszewo) for the LPG fuel supply system.

Nomenclature

AFR	air fuel ratio	g	gravitational acceleration
DAQ	data acquisition system	h	tire height
DF	diesel fuel	H	vehicle height
ECU	electronic control unit	i_0	gear ratio of the final drive
EGCU	electronic gas control unit	i_g	gear ratio of the transmission for selected gear
EGR	exhaust gas recirculation	J_p	moment of inertia of the rotating components associated with the power unit
FWD	front wheel drive	J_w	wheel moment of inertia
LPG	liquefied petroleum gas	L_{HVG}, L_{HVD}	lower heating values of gaseous and diesel fuel
NEDC	New European Driving Cycle	m_G, m_D	mass flow rates of gaseous and diesel fuel
NHRR	Net Heat Release Rate	m_i	vehicle mass of inertia
OP	operation point	m_v	total mass of the vehicle, represent mass of the base vehicle unit plus driver and all on-board systems associated with the power train system
PMR	power to curb mass ratio	N, N_A, N_C, N_S	represent the engine, wheel, clutch, propeller shaft, rotating speed respectively
SR	substitution ratio	p	in-cylinder pressure
WLTC	Worldwide Harmonized Light Vehicles Test Cycles	Q	total amount of in-cylinder heat
WLTP	Worldwide Harmonized Light Vehicles Test Procedure	r	rim radius
Af	cross-sectional area of the vehicle	r_d	dynamic radius of the tire
B	vehicle width	T_e, T_L, T_{tr}	represent the engine, powertrain resistance, traction, torques respectively
Cd	aerodynamic drag coefficient	V_c	in-cylinder volume
C_p	specific heat at constant pressure	V	velocity of the vehicle
Crr	rolling resistance coefficient	α	slope angle of the road
C_v	specific heat at constant volume	γ	ratio of the specific heats
d_1	mass factor of the engine	δ	mass factor
d_2	mass factor of the wheel	η_t	driveline overall efficiency
Fa	aerodynamic resistance	λ	air fuel ratio
Fgrade	gradient resistance	ρ	air density
Fi	inertia resistance	φ	crank angle
Fr	rolling resistance		
Ft	traction force		
Ftr	total traction resistance		

Bibliography

- [1] ASHOK, B., ASHOK DENIS, S., RAMESH KUMAR, C. LPG diesel dual fuel engine – a critical review. *Alexandria Engineering Journal*. 2015, **54**(2), 105-126. <https://doi.org/10.1016/j.aej.2015.03.002>
- [2] DĘBICKI, M. Teoria samochodu: teoria napędu. *Wydawnictwa Naukowo-Techniczne*, Warszawa 1976.
- [3] ECKERT, J.E., SANTICIOLLI, F.M., COSTA, E.S. et al. Vehicle gear shifting co-simulation to optimize performance and fuel consumption in the brazilian standard urban driving cycle. *Blucher Engineering Proceedings*. 2014, **1**(2), 615-631. <https://doi.org/10.5151/engpro-simea2014-81>
- [4] GENG, P., CAO, E. TAN, Q. et al. Effects of alternative fuels on the combustion characteristics and emission products from diesel engines: A review. *Renewable and Sustainable Energy Reviews*. 2017, **71**, 523-534. <https://doi.org/10.1016/j.rser.2016.12.080>
- [5] GIAKOUMIS, E.G., ZACHLOTIS, A.T. Investigation of a Diesel-engined vehicle's performance and emissions during the WLTC driving cycle – comparison with the NEDC. *Energies*. 2017, **10**, 1-19. <https://doi.org/10.3390/en10020240>
- [6] JAZAR, R. Vehicle Dynamics: Theory and Application: Third Edition. *Springer*. Cham 2017. <https://doi.org/10.1007/978-3-319-53441-1>
- [7] KIMO Kigaz. Combustion gas analyser User manual. 1–24, 2010.
- [8] KROPIWNICKI, J. Modelowanie układów napędowych pojazdów z silnikami spalinowymi. *Wydawnictwo AGNI*. Pruszcz Gdański 2016.
- [9] LUFT, S. A dual-fuel compression ignition engine – distinctive features. *Combustion Engines*. 2010, **141**(2), 33-39. <https://doi.org/10.19206/CE-117144>
- [10] GAN, G., MA, C., WU, J. Data Clustering: Theory, Algorithms, and Applications. *ASIAM Series on Statistics and Applied Probability*. 2007. <https://doi.org/10.1137/1.9780898718348>
- [11] MATHWORKS. Vehicle Body 1DOF Longitudinal. Retrieved from <https://www.mathworks.com/help/autoblks/ref/vehiclebody1doflongitudinal.html>
- [12] MR, I., MOHAN, D. A survey of grid based clustering algorithms. *International Journal of Engineering Science and Technology*. 2010, **2**, 3441-3446.
- [13] PARK, S.H., LEE, C.S. Applicability of dimethyl ether (DME) in a compression ignition engine as an alternative fuel. *Energy Conversion and Management*. 2014, **86**, 848-863. <https://doi.org/10.1016/j.enconman.2014.06.051>
- [14] STEPANENKO, D., KNEBA, Z. ECU calibration for gaseous dual fuel supply system in compression ignition engines. *Combustion Engines*. 2020, **182**(3), 33-37. <https://doi.org/10.19206/CE-2020-306>
- [15] TIRA, H.S., HERREROS, J.M., TSOLAKIS, A. et al. Characteristics of LPG-diesel dual fuelled engine operated with rapeseed methyl ester and gas-to-liquid diesel fuels. *Energy*. 2012, **47**(1), 620-629. <https://doi.org/10.1016/j.energy.2012.09.046>

- [16] TUKIMAN, M.M., OSMAN, S.A., FAWZI, M. et al. Effect of Performance and Exhaust Emission using Liquid Phase LPG Sequential Injection as an Alternative Fuel in Spark Ignition Engine. *International Journal of Integrated Engineering*. 2018, **10**(8), 223-230. <https://doi.org/10.30880/ijie.2018.10.08.032>
- [17] UNECE Worldwide Harmonized Light Vehicles Test Procedure (WLTP). 2021.
- [18] VOLKSWAGEN. The Self-Study Programme 209 1.9-Itr TDI Engine with pump injection system. Retrived from http://www.volkspage.net/technik/spp/spp/SSP_209.pdf
- [19] VWGolf.pl. Dane techniczne Volkswagen Golf 4. Retrived from <https://www.vwgolf.pl/dane-techniczne/vw-golf-mk4/>
- [20] WANG, L., LI, H. Clustering algorithm based on grid and density for data stream. *AIP Conference Proceedings*. 2017, **1839**, 020202. <https://doi.org/10.1063/1.4982567>
- [21] WARCZEK, J. Metoda pomiaru promienia dynamicznego koła samochodowego. *Zeszyty Naukowe Politechniki Śląskiej*. 2010, **7**, 97-103.

Zbigniew Kneba, DSc., DEng. – Faculty of Mechanical Engineering and Ship Technology, Gdansk University of Technology.
e-mail: zkneba@pg.edu.pl



Denys Stepanenko, MEng., PhD student – Faculty of Mechanical Engineering and Ship Technology, Gdansk University of Technology.
e-mail: denstepa@pg.edu.pl



Jacek Rudnicki, DEng. – Faculty of Mechanical Engineering and Ship Technology, Gdansk University of Technology.
e-mail: jacekrud@pg.edu.pl

