



Synthesis, thermal, structural and electrical properties of vanadium-doped lithium-manganese-borate glass and nanocomposites

Agata Jaročka¹ · Przemysław P. Michalski¹ · Jacek Ryl² · Marek Wasiucionek¹ · Jerzy E. Garbarczyk¹ · Tomasz K. Pietrzak¹

Received: 25 March 2019 / Revised: 1 August 2019 / Accepted: 23 August 2019
© The Author(s) 2019

Abstract

A glassy sample with a nominal formula $\text{LiMn}_{1-3x/2}\text{V}_x\text{BO}_3$ (where $x = 0.05$) was synthesised using the melt-quenching method. Material was characterised by differential thermal analysis (DTA), X-ray diffraction (XRD) at room temperature and as a function of temperature (HT-XRD), X-ray photoelectron spectroscopy (XPS), impedance spectroscopy (IS) and scanning electron microscopy (SEM). Dependences of glass transition and crystallisation temperatures on the heating rate in DTA experiments were determined. The initial value of electrical conductivity of the glass was $1.4 \times 10^{-15} \text{ Scm}^{-1}$. It was significantly increased by a proper thermal nanocrystallisation. The maximum value was higher by 6 orders of magnitude and reached $2.6 \times 10^{-9} \text{ Scm}^{-1}$ at room temperature. Expected crystalline phases (i.e. monoclinic and hexagonal LiMnBO_3) upon heating were identified and assigned to thermal events observed with DTA. Microstructure of nanocrystalline samples observed by SEM revealed nanocrystalline grains noticeably smaller than 100 nm. Results explaining nanocrystallisation process are coherent.

Keywords Lithium-manganese-borate glasses · Nanocrystallisation · Vanadium doping · Conductivity increase

Introduction

Nowadays, rapid technology development in the fields of portable electronic devices or electric cars requires novel, technologically mature, safe and economically affordable portable power sources. Especially, the demand for more efficient and lighter Li-ion cells is growing extremely quickly. One of the factors that has crucial influence on batteries' performance is the electrical conductivity of their cathode materials. Therefore, it is very important to carry out researches on better cathode materials as well as methods to improve their properties.

Recently, an interesting way to enhance electrical conductivity of such materials has been proposed [1, 2],

namely thermal nanocrystallisation of glassy analogues of cathode materials for lithium- and sodium-ion batteries. This method was successfully applied to vitreous $\text{V}_2\text{O}_5\text{-P}_2\text{O}_5$ [3], $\text{Li}_2\text{O-FeO-V}_2\text{O}_5\text{-P}_2\text{O}_5$ [4, 5], $\text{LiF-V}_2\text{O}_5\text{-P}_2\text{O}_5$, $\text{Li}_2\text{O-FeO-B}_2\text{O}_3$ [6] and some other systems, usually resulting in a giant increase in the electrical conductivity. In high-conducting nanomaterials, nanocrystallites with sizes between 5 and 100 nm were embedded in a residual glassy matrix. Highly disordered shells provided favourable conditions for electron hopping between aliovalent ions of transition metals, e.g. Fe, V, and Ti.

While many reports have been published on phosphate polyanion cathode materials [7], in recent years, there has been also interest in lithium-manganese-borate (nominally LiMnBO_3) compound. It is due to its high theoretical gravimetric capacity (222 mAhg^{-1} [8–12]) that originates from low molar mass of the borate group. Moreover, B_2O_3 is a very well-known glass former. Therefore, it was natural to synthesise a glassy analogue of LiMnBO_3 and try to improve its modest electrical conductivity by thermal nanocrystallisation [13]. Despite many efforts and comprehensive studies, the final values of electrical

✉ Tomasz K. Pietrzak
tomasz.pietrzak@pw.edu.pl

¹ Faculty of Physics, Warsaw University of Technology, Koszykowa 75, PL-00-662, Warsaw, Poland

² Faculty of Chemistry, Gdańsk University of Technology, Narutowicza 11/12, PL-80-233, Gdańsk, Poland

conductivity have been unsatisfactory. Therefore, we decided to introduce some vanadium dopant to the system, which should have positive influence on the electronic conduction. Its good effect on electrical properties of materials was proven by previous studies on vanadium-doped LiFePO_4 in polycrystalline phase (e.g. [14, 15]) and in nanostructural glass-ceramics (e.g. [4]).

Experimental

Synthesis. The aim was to synthesise a glassy sample with a nominal formula $\text{LiMn}_{1-3x/2}\text{V}_x\text{BO}_3$ where $x = 0.05$ to have vanadium presumably at 3+ oxidation state. Investigated sample was obtained using the melt-quenching method. Stoichiometric amounts of Li_2CO_3 (POCH, Polish Chemicals, p.a., 1.1194 g), V_2O_5 (Aldrich, p., 0.1378 g), $\text{Mn}(\text{CH}_3\text{COO})_2 \times 4\text{H}_2\text{O}$ (Aldrich, p., 6.8688 g) and H_3BO_3 (POCH, p.a., 1.8740 g) were used. Substrates were ground in a planetary mill (Retsch PM100). The pulverised powder was placed in a porcelain crucible and then put into a furnace preheated to 1125 °C and kept there for 15 min. An outer bigger crucible filled with graphite (so called double crucible technique [16]) was used to prevent Mn^{2+} from oxidation and to reduce vanadium to 3+ oxidation state. Melted batch was rapidly quenched between two stainless steel plates in order to obtain glassy material [5].

Characterisation methods Samples of as-received material were characterised by the following methods: differential thermal analysis (DTA), X-ray diffractometry (XRD) at room temperature and as a function of temperature (HT-XRD), high-resolution X-ray photoelectron spectroscopy (XPS), impedance spectroscopy (IS) and scanning electron microscopy (SEM).

Differential thermal analysis was used to investigate thermal events occurring in the sample while heating with different rates and to determine its characteristic temperatures of glass transition (T_g), crystallisation (T_c) and melting (T_m). Measurements were carried out with a Q600 analyser (TA Instruments) and the results were analysed with the TA Universal Analysis software. Samples were measured in argon flow at temperature ranging from room temperature to 800 °C and with the heating rates from 1 to 40 °Cmin⁻¹ in order to observe process kinetics.

Powder X-ray diffractometry studies were performed with Philips X'Pert Pro diffractometer equipped with a copper lamp ($\text{CuK}\alpha = 1.54 \text{ \AA}$). Measurements were firstly carried out at room temperature to verify amorphousness of the material and consequently at elevated temperatures up to 650 °C with 1 °Cmin⁻¹ heating rate to observe crystallisation processes. The temperature of the sample was

stabilised for 15 min before acquisition of each pattern, which lasted for another 22 min. In this experiment, an Anton Paar HTK-1200 furnace and nitrogen flow were used. One additional measurement was done for the sample previously annealed at 700 °C in a separate chamber furnace. It was necessary to perform additional annealing ex situ, because the proximity of the sample's melting point prevented from performing whole measurement in situ (it posed a risk of accidental liquefying of the sample during an ongoing XRD measurement which could damage at least the sample holder of the diffractometer).

In order to determine the relative concentration of $\text{Mn}^{2+}/\text{Mn}^{3+}$, high-resolution X-ray photoelectron spectroscopy (XPS) studies were carried out on an Escalab 250 Xi from Thermofisher Scientific at Gdańsk University of Technology. The spectroscope was equipped with $\text{AlK}\alpha$ source, pass energy was 30 eV and the spot size diameter 250 micrometre. Charge compensation was controlled through the low-energy electron and low-energy Ar^+ ion emission by means of a flood gun (emission current 150 mA, beam voltage 2.1 V, filament current 3.5 A), with normalisation of the X-axis (binding energy) for the peak characteristics of neutral carbon C 1s (284.6 eV) [17, 18]. For deconvolution purposes Avantage software (Thermofisher Scientific) was used.

Microstructure of the samples were observed using scanning electron microscope Zeiss ULTRA Plus at the Institute of High Pressure Physics of the Polish Academy of Sciences. Previously annealed samples were cut just before the imaging in order to observe their cross-section. Material was covered with a thin layer of conductive carbon, because the conductivity of the samples was still unsatisfactory for high-resolution SEM observations.

Impedance spectroscopy was used to investigate electrical properties of the material. Studies were performed with a Novocontrol Alpha-A analyser in the frequency range from 10⁻² to 10⁷ Hz. To study the temperature dependence of the conductivity, the holder with the sample was placed in the oven (manufacturer: Czylok) equipped with temperature control system. Before measurement, platinum electrodes were sputtered on the both sides of the samples in a Baltec SCD500 sputter. A Eurotherm 2404 controller was used to provide temperature stabilisation as good as 0.1 °C during acquisition of the impedance spectrum at each temperature step. The whole measurement was fully automatised and controlled with a software developed in our group [19]. The heating/cooling rates between each impedance measurement were set to 5 °Cmin⁻¹. Before acquisition of each spectrum, the sample was stabilised at fixed temperature for at least 30 min. Therefore the effective heating/cooling rate was lower than 1 °Cmin⁻¹.

Results and discussion

Differential thermal analysis

The DTA trace acquired at the heating rate of 1 °Cmin^{-1} is presented in Fig. 1a. The curve was typical for a glassy material: a glass transition followed by two crystallisation peaks and one melting process were marked with arrows. The exact values of the temperature of these thermal events are given in Table 1. The presence of two exothermic peaks indicates multiphase character of the material after annealing. The glass transition temperature is quite similar to the value obtained for LiMnBO_3 glass ($T_g = 411\text{ °C}$), whereas the main crystallisation appeared at the temperature $\sim 60\text{ °C}$ higher [13]. This is in agreement with our previous studies on $\text{LiFe}_{1-5x/2}\text{V}_x\text{PO}_4$ nanomaterials, where T_c increased with an increasing content of vanadium dopant [4].

In Fig. 1b, results for heating rates from 2 °Cmin^{-1} to 40 °Cmin^{-1} are shown. A step visible at the beginning for lower heating rates is not related to any thermal transition and was identified as an apparatus artefact. One can observe that transition temperatures strongly depend on heating rate: they are higher for faster heating rates. This behaviour is typical for DTA experiments and has been observed for many other glass systems (e.g. [20]).

T_g and T_c temperatures were determined for each heating rate to study process kinetics, according to Kissinger theory [21]. This theory describes dependency between the thermal

Table 1 Glass transition, crystallisation and melting temperatures determined for the heating rate of 1 °Cmin^{-1}

T_g (°C)	T_{c1} (°C)	T_{c2} (°C)	T_m (°C)
406	564	708	739

event temperature and the heating rate. Its main equation can be written as

$$\ln\left(\frac{\theta}{T_m^2}\right) = -\frac{E_a}{k_B T_m} + \text{const} \quad (1)$$

where θ is the heating rate, T_m is the characteristic temperature for certain process, E_a is the activation energy of the process, and k_B is the Boltzmann constant.

In Fig. 2a, cumulative plots of the dependence of temperature of glass transition and crystallisation on the heating rates are shown in $\ln(\theta T^{-2})$ vs. reciprocal of temperature coordinates. Activation energies were calculated as $E_a = 2.90(21)\text{ eV}$ and $E_a = 5.40(41)\text{ eV}$, accordingly. The value for the glass transition is around 1 eV higher than the one obtained at our group for phosphate glasses containing vanadium (V) oxide and about 1 eV

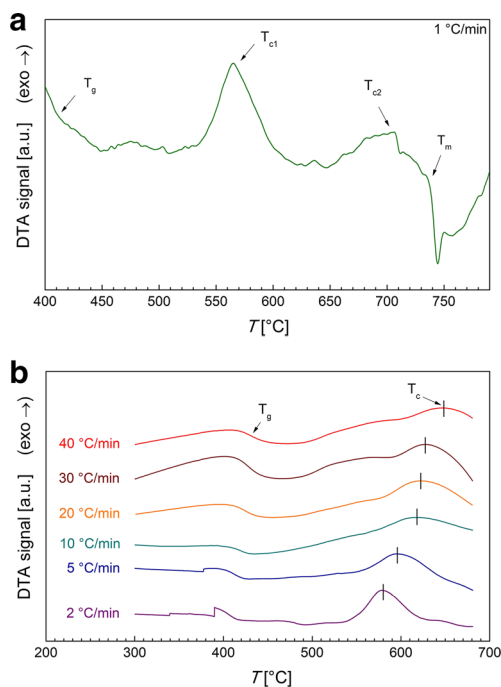


Fig. 1 DTA curves acquired at different heating rates: **a** 1 °Cmin^{-1} and **b** from 2 to 40 °Cmin^{-1}

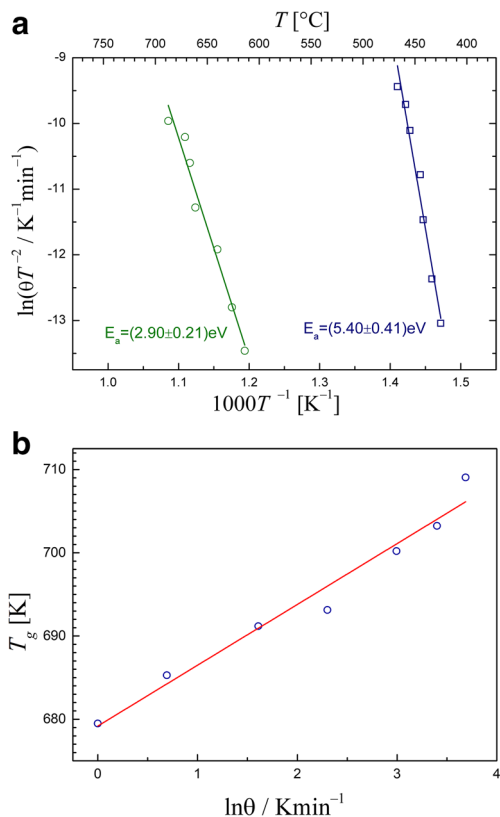


Fig. 2 **a** Kissinger plot for the investigated sample. Crystallisation temperatures are marked with green circles and glass transition ones with blue squares. Activation energies are given next to the data. **b** Lasocka plot for the investigated sample

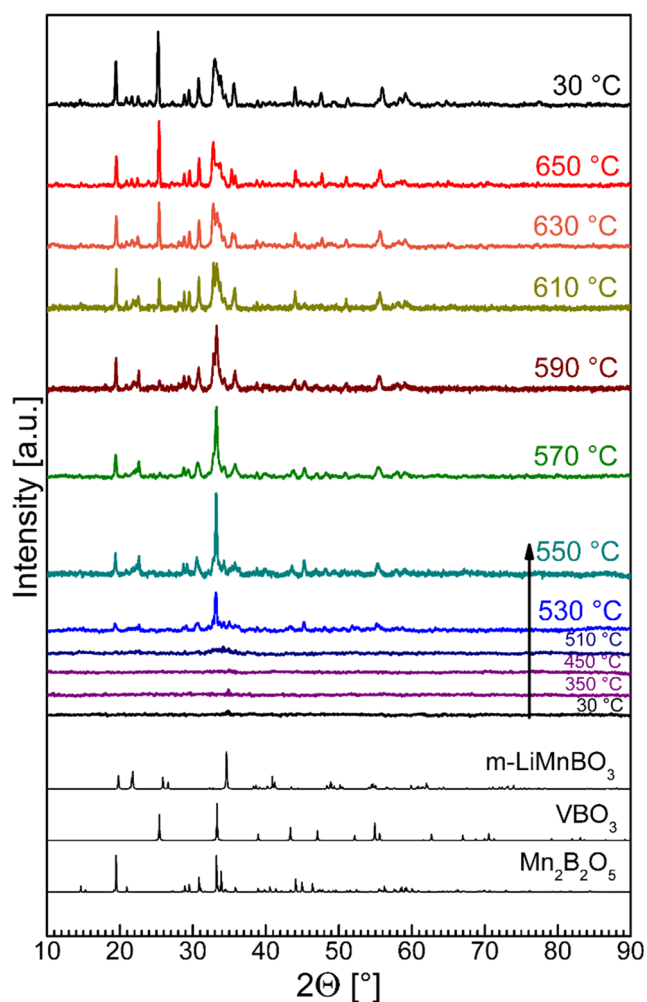


Fig. 3 Diffractograms for sample measured in the temperatures range 30 – 650 °C with 1 °Cmin⁻¹ heating rate. XRD patterns for m-LiMnBO₃, VBO₃ and Mn₂B₂O₅ phases are placed at the bottom

Fig. 4 Room temperature diffractograms of samples crystallised at 650 °C and 700 °C. Reference patterns of m-LiMnBO₃, h-LiMnBO₃, VBO₃ and Mn₂B₂O₅ phases are shown below

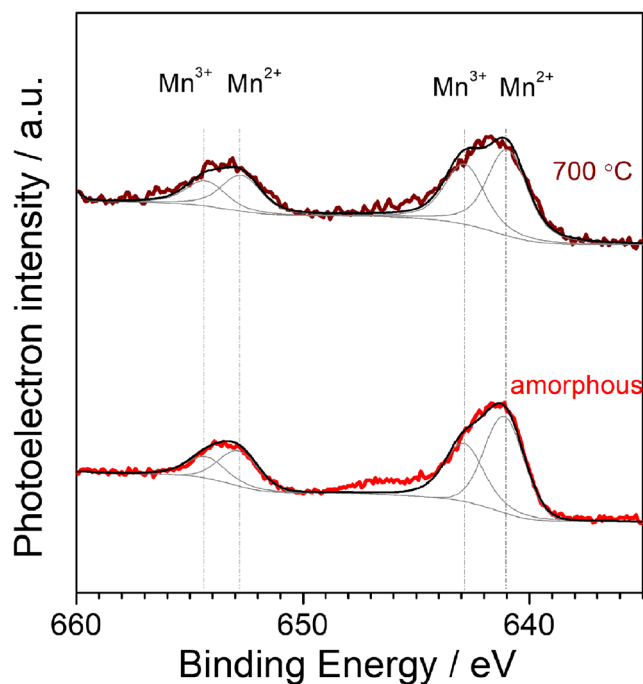
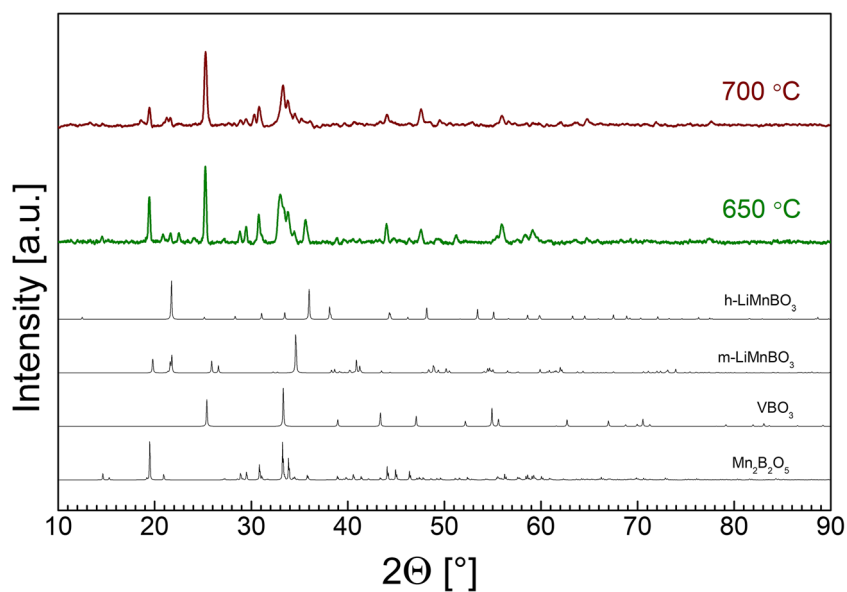


Fig. 5 High-resolution XPS spectra glassy sample and the sample crystallised at 700 °C. Fitted profiles ascribed to presence of Mn²⁺ and Mn³⁺ ions are shown as grey lines above the background

lower than the one containing also lithium oxide and iron (II) oxide [20].

While Kissinger theory is the most frequently used in the field of crystallisation kinetics, there is another simpler approach proposed by Lasocka, which gives much easier equation describing glass transition temperature vs. the heating rate [22]:

$$T_g = A + B \ln \theta \quad (2)$$

Table 2 The share of manganese oxidation states, based on high-resolution XPS analysis

Label	Mn ²⁺	Mn ³⁺
Amorphous	58.3 %	41.7 %
700 °C	58.9 %	41.1 %

where T_g is the glass transition temperature, A is the glass transition temperature when $\theta \rightarrow 1 \text{ }^\circ\text{Cmin}^{-1}$, B is the constant, and θ is the heating rate.

In Fig. 2b (glass transition temperature in function of $\ln(\theta)$), one can see a linear fit of parameters A and B of Lasocka's equation. Hence, B parameter was determined as 7.31(57) and A parameter as 679.2(14) K = 406.0(14) °C. It should be stressed that A factor is equal to the glass transition temperature obtained from the direct DTA measurement ($T_g = 406 \text{ }^\circ\text{C}$) for heating rate $1 \text{ }^\circ\text{Cmin}^{-1}$. This value is probably very close to a glass transition temperature occurring at $\theta \rightarrow 0$.

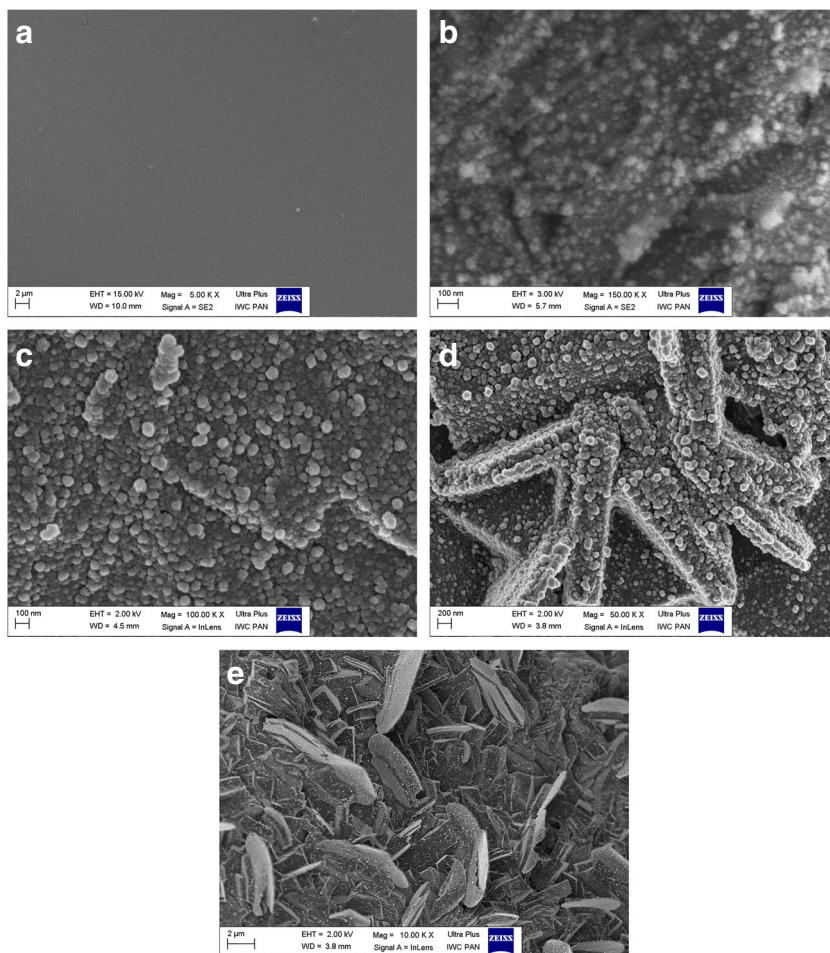
X-ray diffractometry

X-ray diffractometry for the sample at room temperature confirmed amorphousness of the material, because of the absence of peaks characteristic for crystalline phases – Fig. 3, black curve obtained for 30 °C.

First detectable peaks appeared at 530 °C and can be identified as $\text{Mn}_2\text{B}_2\text{O}_5$ (ICDD card no. 04-018-4266) phase. At 550 °C and 570 °C, one can observe appearance of first traces of m-LiMnBO_3 (ICDD card no. 01-083-8511) and VBO_3 (ICDD card no. 00-017-0311) peaks. Some small unidentified peaks originate from impurities from porcelain crucible (LiAlSiO_4). However, their amount is not significantly high.

Figure 4 presents X-ray patterns (acquired at room temperature) of two samples: one heated up to 650 °C and the other one up to 700 °C with $1 \text{ }^\circ\text{Cmin}^{-1}$ heating rate, so that one can observe similarities and differences between them. It is clearly visible that most of the peaks of crystalline phases for both samples coincide, but still there are some differences—appearance of additional small peaks can be

Fig. 6 SEM micrographs of samples: **a** glass, **b** sample annealed at 600 °C, **c** sample annealed at 625 °C, **d** sample annealed at 675 °C, **e** sample annealed at 675 °C



correlated with growth of h-LiMnBO₃ (ICDD card no. 00-053-0371) phase at higher temperature. Therefore, phases that occurred at lower temperatures could be correlated with the first crystallisation temperature from DTA measurement ($T_{c1} = 564$ °C) and h-LMB phase with the second crystallisation ($T_{c2} = 708$ °C).

For reflexes ascribed to m-LiMnBO₃ and h-LiMnBO₃ phases, Scherrer estimation was used to determine crystallites sizes after nanocrystallisation at 700 °C. Their values were as follows: for m-LiMnBO₃—from 69 to exceeding 120 nm and for h-LiMnBO₃—from 23 to 83 nm. It should be emphasised that this method gives larger errors for grain sizes above 100 nm, so the upper limit for m-LiMnBO₃ is not reliable. These calculations also confirm correlation with two crystallisations in the material. The grains of the monoclinic phase that appeared at the first crystallisation process have grown up and the crystallites of the hexagonal phase have just started to grow.

High-resolution X-ray photoelectron spectroscopy

In Fig. 5, a part of a high-resolution XPS spectrum for two samples—amorphous and nanocrystallised at 700 °C—used to determine relative shares of Mn²⁺ and Mn³⁺ ions is shown. Each sample was cut right before measurement in

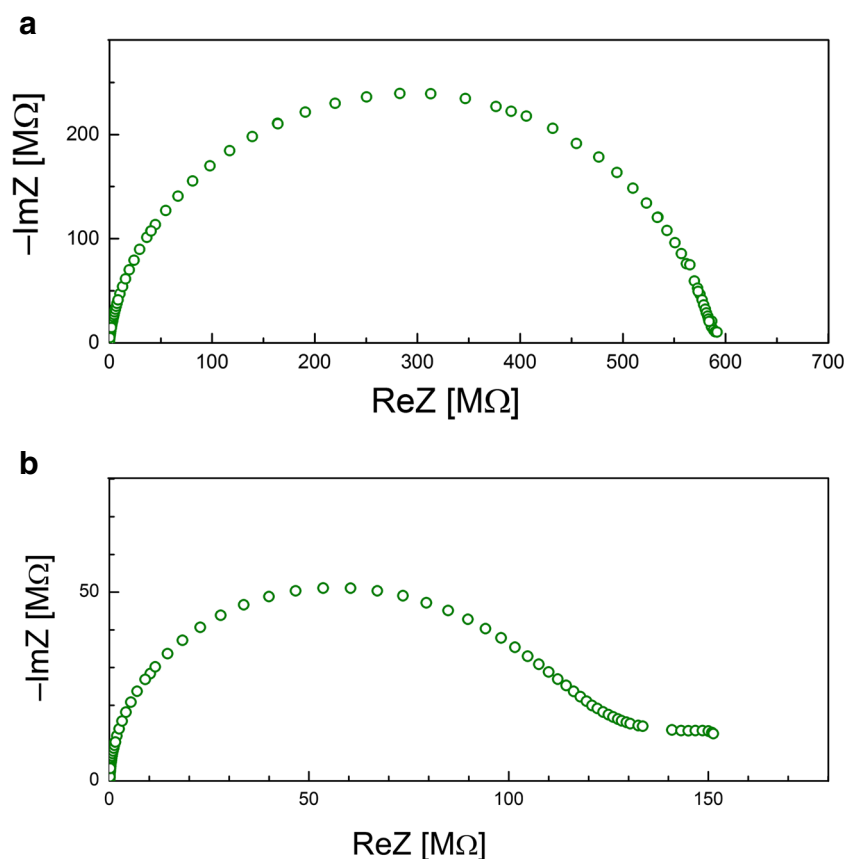
order to investigate the sample's cross-section that possibly had the shortest contact with air. The fitting procedure was carried out using Gaussian-Lorentzian functions. The exact shares of aliovalent manganese ions are shown in Table 2. One can see that relative ratio of Mn²⁺/Mn³⁺ concentration did not change significantly upon heating. Nevertheless, the experimental share of Mn²⁺ : Mn³⁺ (approx. 3:2) differs noticeable from nominal composition, where only Mn²⁺ should be present. On the other hand, presence of aliovalent ions of transition metal oxide is desirable from the point of view of electron hopping, according to Mott's theory.

Similar analysis was performed for vanadium ions. It was, however, difficult due to low content of this element in the nominal formula. While no quantitative conclusions were drawn, the presence of V⁵⁺ line was observed. This means that the synthesis conditions (e.g. temperature or time) were not sufficient to lead to complete reduction of vanadium V⁵⁺ to V³⁺ and to prevent manganese from oxidation to Mn³⁺.

Scanning electron microscopy

Material's surface structure was investigated using scanning electron microscopy. In Fig. 6, selected SEM micrographs are presented.

Fig. 7 Nyquist plots obtained for investigated sample, **a** during heating at 170 °C and **b** during cooling (from 675 °C) at 170 °C



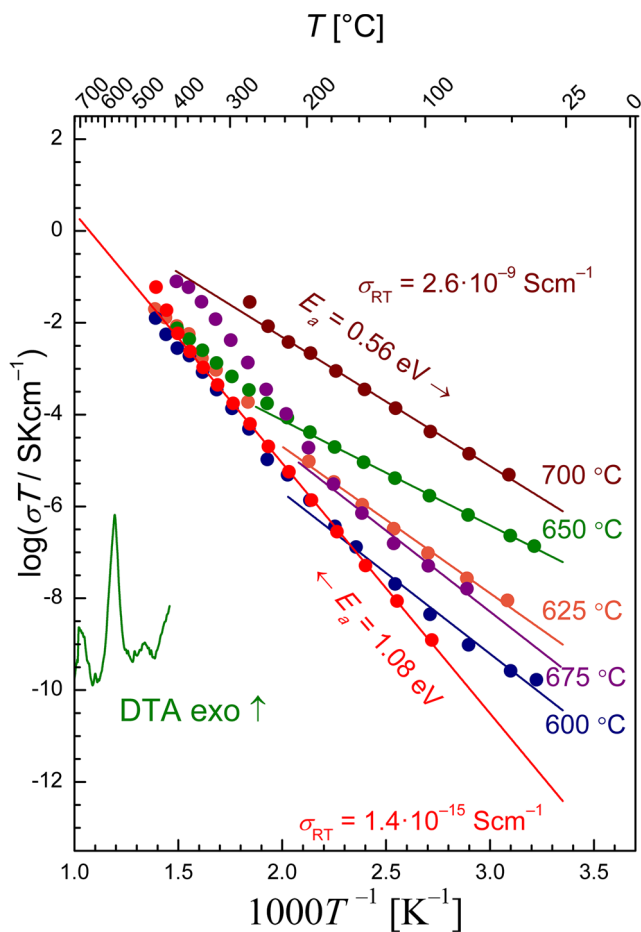


Fig. 8 The Arrhenius plot for different temperatures of annealing. Red circles represent heating and other colours of circles represent cooling from temperatures within the range 600–700 °C. DTA curve is shown for comparison

Uniform surface and absence of visible grains (Fig. 6a) proves that initial sample was indeed vitreous and homogeneous. For the rest of the nanocrystalline samples, one can see one common feature – appearance of visible smaller bubble-shaped grains situated on bigger rod- or plate-shaped crystallites. Size of the smaller grains varies from a few to 100 nm while the bigger significantly exceed 100 nm.

This phenomenon is in line with DTA (two crystallisations) and XRD ($m\text{-LiMnBO}_3$, VBO_3 and $\text{Mn}_2\text{B}_2\text{O}_5$ occurring at lower temperatures and $h\text{-LiMnBO}_3$ phase at higher

ones as well as Scherrer estimations for their grain sizes) measurements. Furthermore, also better electrical properties of the nanocrystallised samples can be explained by appearance of smaller grains, most possibly $h\text{-LMB}$. All these observations are in line with other researchers' published works on similar topics [11, 25].

Impedance spectroscopy

In order to find optimal conditions for nanocrystallisation (i.e. to maximise the final conductivity), a few pieces of the amorphous sample were subjected to impedance spectroscopy measurements in a function of temperature. The experiments were carried out to different maximum temperatures for each piece (600–700 °C), which were close to the second crystallisation temperature determined from the DTA curve. In Fig. 7a and b, one can see Nyquist plots at ~ 170 °C during heating (glassy sample) and cooling (nanocrystalline sample) ramps. In the former case, one can observe a plain semicircle indicating predominant electronic character of the conductivity. At higher temperatures, a 'spur' was visible at low frequencies, which is characteristic for ionic conduction in the material (blocking Li^+ ions at the Pt electrode). For a nanomaterial, one can distinguish two semicircles in the corresponding Nyquist plot (Fig. 7b).

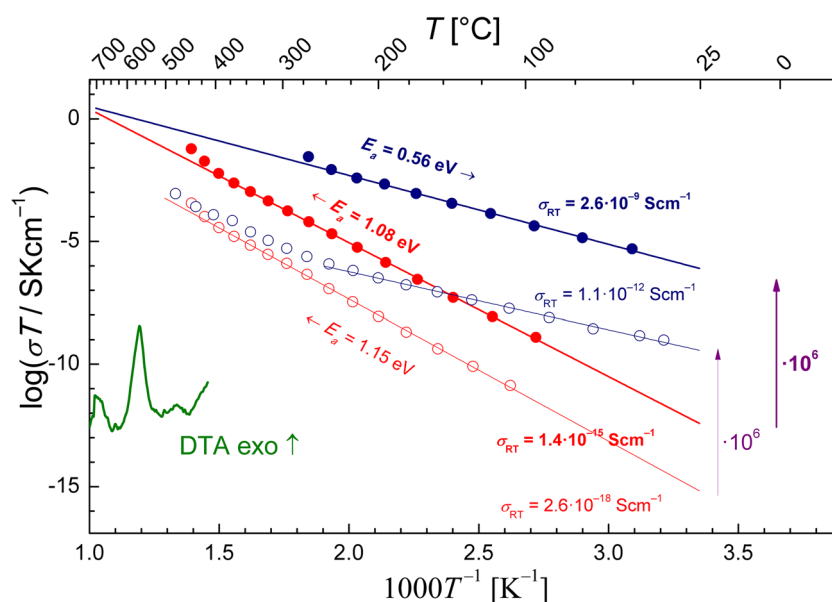
The electrical conductivity was calculated from the impedance spectra. In Fig. 8, temperature dependence of the electrical conductivity diagrams for all of the results from impedance spectroscopy are presented in Arrhenius coordinates ($\log(\sigma T)$ vs. $1000T^{-1}$). Initial electrical conductivity for glassy samples at room temperature was too low to be measured directly. Hence, the linear fitting (in the Arrhenius coordinates) to data acquired at higher temperatures was extrapolated to room temperature. The exact values are given in Table 3. It is worth to mention that initial glass conductivity for every sample was almost identical what indicates homogeneity of obtained material. The average value was calculated as $1.4(3) \times 10^{-15} \text{ S cm}^{-1}$.

All of the values calculated from the measurements are presented in Table 3. The highest conductivity value was obtained for the nanocrystallisation at 700 °C and reached $2.6 \times 10^{-9} \text{ S cm}^{-1}$ (at RT) what gives increase in the

Table 3 Parameters obtained from impedance spectroscopy measurements

Nanocrystallisation temperature (°C)	$\sigma_{\text{RT(glass)}} (\text{S cm}^{-1})$	$\sigma_{\text{RT(nano)}} (\text{S cm}^{-1})$	$\frac{\sigma_{\text{RT(nano)}}}{\sigma_{\text{RT(glass)}}$	$E_{a(\text{glass})} (\text{eV})$	$E_{a(\text{nano})} (\text{eV})$	$\frac{E_{a(\text{glass})}}{E_{a(\text{nano})}}$
600	1.6×10^{-15}	1.2×10^{-13}	75.0	1.1	0.7	1.6
625	9.4×10^{-16}	3.3×10^{-12}	3.5×10^3	1.1	0.6	1.8
650	1.8×10^{-15}	2.1×10^{-10}	1.2×10^5	1.1	0.5	2.2
675	1.7×10^{-15}	1.1×10^{-12}	6.5×10^2	1.1	0.7	1.6
700	1.3×10^{-15}	2.6×10^{-9}	2.0×10^6	1.1	0.6	1.8

Fig. 9 Arrhenius plot for sample nanocrystallised at 700 °C (full circles). Red circles represent heating and blue ones represent cooling. Corresponding DTA curve is shown for comparison. Empty circles correspond to results obtained for LiMnBO_3 without vanadium doping [13]



conductivity by 2×10^6 . This measurement is also presented separately in Fig. 9 and compared with values for undoped LiMnBO_3 [13]. One can see that the addition of vanadium caused boost in the conductivity value by 3 orders of magnitude. It is worth to mention that the difference was visible already in amorphous sample and has risen together with forming the nanocomposite. Furthermore, with thermal nanocrystallisation, the decrease in the activation energy value was also obtained. The lowest value of $E_a = 0.5$ eV was observed for the sample heated to 650 °C. However, values for all other measurements are similar: all of them are between 0.6 and 0.7 eV. The phenomenon of a significant increase in the conductivity and a decrease in the activation

energy as a result of thermal nanocrystallisation was broadly discussed by us (e.g. in [1]) on a base of the Mott's theory of electron hopping in oxide glasses containing transition metal oxides [23].

In Fig. 10, one can see correlation between conductivity values for different annealing temperatures and crystallisation temperatures. Since both, DTA and IS, measurements were carried out with a comparable ($1 \text{ }^\circ\text{Cmin}^{-1}$) heating rate, it is possible to combine the results. One can deduce that the highest obtained value is strictly associated with second crystallisation. The minimum appearing above 650 °C may be attributed to a further growth of nanocrystallites, depressing the aforementioned effect of size in small nanocrystallites. Similar effect was observed previously in $\text{V}_2\text{O}_5\text{-P}_2\text{O}_5$ glasses [24].

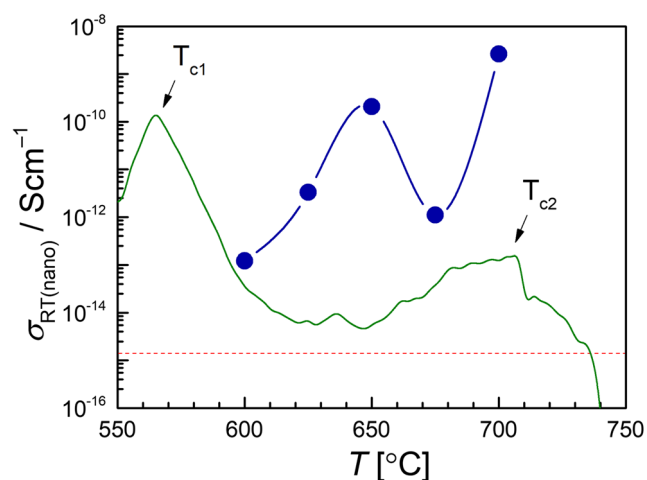


Fig. 10 Dependence of conductivity after nanocrystallisation vs. the annealing temperature. DTA curve is given for comparison—green solid line. Conductivity value for initial glassy sample was marked with red dashed line

Conclusions

In this work, a glassy vanadium-doped lithium-manganese-borate material was successfully synthesised with melt-quenching method. Vitreous character of the sample was confirmed by DTA, XRD and SEM measurements. Glass transition temperatures measured at different heating rates followed both Lasocka's and Kissinger's formulas. Crystallisation temperatures also followed Kissinger's theory. Expected crystal phases were detected by XRD method in material after its appropriate annealing and identified. The highest conductivity at room temperature ($2.6 \times 10^{-9} \text{ Scm}^{-1}$) was obtained for the sample nanocrystallised at 700 °C. This means a conductivity increase by a factor of 2×10^6 . This value was also higher by 3 orders of magnitude than for lithium-manganese-borate glass without vanadium

doping. Microstructure of nanocrystalline samples observed by SEM revealed presence of bigger and smaller grains, including ones below 100 nm, most probably related to the growth of h-LiMnBO₃ phase.

Acknowledgements The authors are grateful to Mr. Adam Presz, Institute of High Pressure Physics, Polish Academy of Sciences for his help in SEM imaging.

Open Access This article is distributed under the terms of the Creative Commons Attribution 4.0 International License (<http://creativecommons.org/licenses/by/4.0/>), which permits unrestricted use, distribution, and reproduction in any medium, provided you give appropriate credit to the original author(s) and the source, provide a link to the Creative Commons license, and indicate if changes were made.

References

- Pietrzak TK, Wasiucioneck M, Michalski PP, Kaleta A, Garbarczyk JE (2016) Highly conductive cathode materials for Li-ion batteries prepared by thermal nanocrystallization of selected oxide glasses. *Mater Sci Eng B* 213:140–147
- Pietrzak TK, Garbarczyk JE, Wasiucioneck M, Nowiński JL (2016) Nanocrystallization in vanadate-phosphate and lithium-iron-vanadate-phosphate glasses. *Phys Chem Glasses: Eur J Glass Sci Technol, Part B* 57:113–124
- Pietrzak TK, Garbarczyk JE, Gorzkowska I, Wasiucioneck M, Nowiński JL, Gierlotka S, Joźwiak P (2009) Electrical properties vs. microstructure of nanocrystallized V₂O₅-P₂O₅ glasses. *J Power Sources* 194:73–80
- Garbarczyk JE, Pietrzak TK, Wasiucioneck M, Kaleta A, Dorau A, Nowiński JL (2015) High electronic conductivity in nanostructured materials based on lithium-iron-vanadate-phosphate glasses. *Solid State Ionics* 272:53–59
- Pietrzak TK, Wasiucioneck M, Gorzkowska I, Nowiński JL, Garbarczyk JE (2013) Novel vanadium-doped olivine-like nanomaterials with high electronic conductivity. *Solid State Ionics* 251:40–46
- Michalski PP, Pietrzak TK, Nowiński JL, Wasiucioneck M, Garbarczyk JE (2017) Novel nanocrystalline mixed conductors based on LiFeBO₃ glass. *Solid State Ionics* 302:40–44
- Hautier G, Jain A, Chen H, Moore C, Ong SP, Ceder G (2011) Novel mixed polyanions lithium-ion battery cathode materials predicted by high-throughput ab initio computations. *J Mater Chem* 21:17147–17153
- Kim JC, Moore CJ, Kang B, Hautier G, Jain A, Ceder G (2011) Synthesis and electrochemical properties of monoclinic LiMnBO₃ as a Li intercalation material. *J Electrochem Soc* 158(3):A309–A315
- Le Roux B, Bourbon C, Lebedev OI, Colin J-F, Pralong V (2015) Synthesis and characterization of the LiMnBO₃-LiCoBO₃ solid solution and its use as a lithium-ion cathode material. *Inorg Chem* 54:5273–5279
- Legagneur V, An Y, Mosbah A, Portal R, Le Gal La Salle A, Verbaere A, Guyomard D, Piffard Y (2001) LiMBO₃ (M=Mn, Fe, Co): synthesis, crystal structure and lithium deinsertion / insertion properties. *Solid State Ionics* 139:37–46
- Ma R, Shao L, Wu K, Lao M, Shui M, Chen C, Wang D, Long N, Ren Y, Shu J (2013) Electrochemical behaviors of hexagonal LiMnBO₃ as lithium storage host material for lithium-ion batteries. *Ceram Int* 39:9309–9317
- Kim JC, Li X, Moore CJ, Bo S-H, Khalifah PG, Grey CP, Ceder G (2014) Analysis of charged state stability for monoclinic LiMnBO₃ cathode. *Chem Mater* 26:4200–4206
- Michalski PP, Gołębiewska A, Trébosc J, Lafon O, Pietrzak TK, Ryl J, Nowiński JL, Wasiucioneck M, Garbarczyk JE (2019) Properties of LiMnBO₃ glasses and nanostructured glass-ceramics. *Solid State Ionics* 334:88–94
- Hong J, Wang CS, Chen X, Upreti S, Whittingham MS (2009) Vanadium Modified LiFePO₄ Cathode for Li-Ion Batteries. *Electrochem Solid-State Lett* 12(2):A33–A38
- Omenya F, Chernova NA, Upreti S, Zavalij PY, Nam K-W, Yang X-Q, Whittingham MS (2011) Can vanadium be substituted into LiFePO₄? *Chem Mater* 23:4733–4740
- Hirose K, Honma T, Benino Y, Komatsu T (2007) Glass-ceramics with LiFePO₄ crystals and crystal line patterning in glass by YAG laser irradiation. *Solid State Ionics* 178:801–807
- Siuzdak K, Szkoda M, Lisowska-Oleksiak A, Karczewski J, Ryl J (2016) Highly stable organic-inorganic junction composed of hydrogenated titania nanotubes infiltrated by a conducting polymer. *RSC Adv* 6:33101–33110
- Wysocka J, Krakowiak S, Ryl J (2017) Evaluation of citric acid corrosion inhibition efficiency and passivation kinetics for aluminium alloys in alkaline media by means of dynamic impedance monitoring. *Electrochimica Acta* 258:1463–1475
- Pietrzak TK (2019) Multi-device software for impedance spectroscopy measurements with stabilization in low and high temperature ranges working under Linux environment. *Ionics* 25:2445–2452
- Michalski PP, Pietrzak TK, Nowiński JL, Wasiucioneck M, Garbarczyk JE (2016) Dependence of a glass transition temperature on a heating rate in DTA experiments for glasses containing transition metal oxides. *J Non-Cryst Solids* 443:155–161
- Kissinger HE (1957) Reaction kinetics in differential thermal analysis. *Anal Chem* 29(11):1702–1706
- Lasocka M (1976) The effect of scanning rate on glass transition temperature of splat-cooled Te₈₅Ge₁₅. *Mater Sci Eng* 23:173–177
- Austin IG, Mott NF (2014) Polarons in crystalline and non-crystalline materials 18:41–102
- Pietrzak TK, Pawliszak Ł, Michalski PP, Wasiucioneck M, Garbarczyk JE (2014) Highly conductive 90V₂O₅ · 10 P₂O₅ nanocrystalline cathode materials for lithium-ion batteries. *Procedia Engineering* 98:28–35
- Chen W, Zhang H, Zhang XG, Wu L, Liu J, Liu S, Zhong S (2018) Synthesis and electrochemical performance of carbon-coated LiMnBO₃ as cathode materials for lithium-ion batteries. *Ionics* 24:73–81

Publisher's note Springer Nature remains neutral with regard to jurisdictional claims in published maps and institutional affiliations.